



## 30 Wentworth Close, Onchan, Isle of Man. IM3 2JT

A spacious detached modern family home in a sought after location which has been competitively priced to allow for some minor internal and external redecoration.



£575,000 Freehold



## PROPERTY DESCRIPTION

---

OPEN HOUSE THURSDAY 2ND APRIL 12PM UNTIL 2PM

### ACCOMMODATION

This traditionally constructed spacious detached family home is located on a private plot within a sought after modern development close to bus route, golf course and the amenities of Onchan.

The ground floor accommodation briefly comprises of cloakroom, Large 26' lounge leading into conservatory with access onto garden, spacious dining room leading into modern 16' kitchen. In addition there is a utility room with access into the attached double garage.

On the first floor there are 4 bedrooms (1 En-Suite) plus family bathroom.

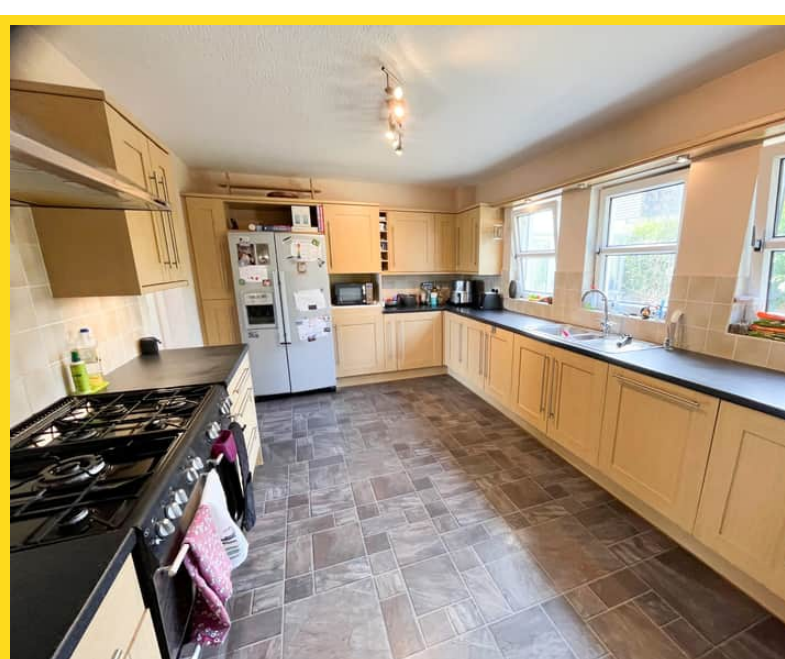
Outside there is a driveway with off road parking for two large cars plus sunny private lawned gardens.

The property has been competitively priced to allow for some minor decorative improvements and in internal inspection is recommended.

### FEATURES

---

- Modern Detached Family Home
- Quiet Sought After Location
- Priced to allow for Redecoration
- Lounge, Dining Room, Kitchen plus Conservatory
- 4 Bedrooms (1 En-Suite) plus Cloakroom and Bathroom
- Private Lawned Gardens plus Off Road Parking and Double Garage
- OPEN HOUSE VIEWING THURSDAY 3RD APRIL 12pm UNTIL 2pm





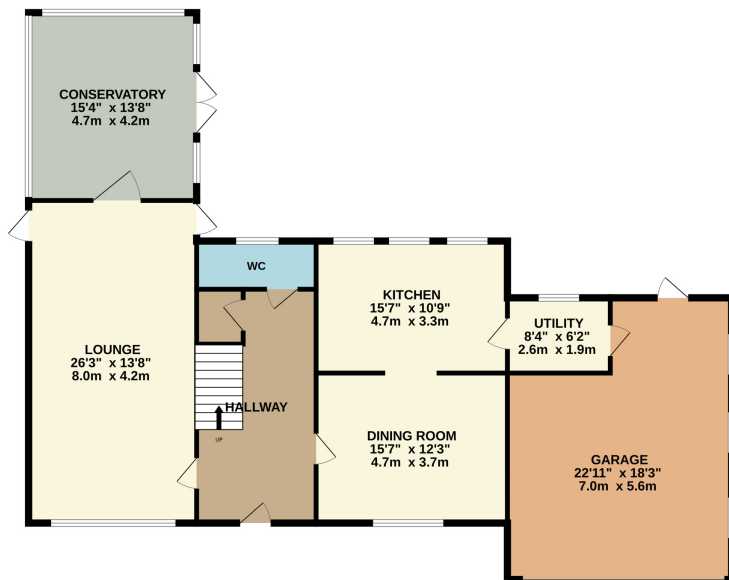
## Property Images

---

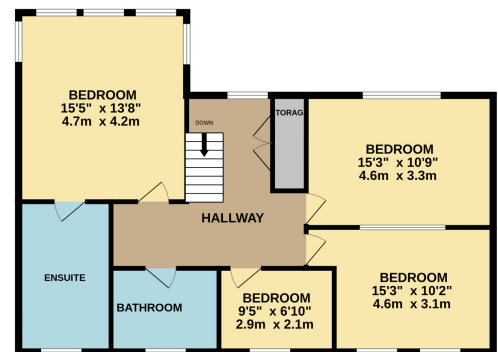


# FLOORPLAN

GROUND FLOOR  
1569 sq.ft. (145.8 sq.m.) approx.



1ST FLOOR  
900 sq.ft. (83.6 sq.m.) approx.



TOTAL FLOOR AREA: 2469 sq.ft. (229.4 sq.m.) approx.

Whilst every attempt has been made to ensure the accuracy of the floorplan contained here, measurements of doors, windows, rooms and any other items are approximate and no responsibility is taken for any error, omission or mis-statement. This plan is for illustrative purposes only and should be used as such by any prospective purchaser. The services, systems and appliances shown have not been tested and no guarantee as to their operability or efficiency can be given.  
Made with Metropix ©2025

**DISCLAIMER:** Whilst Manxmove Ltd believe that these details are correct, neither Manxmove Ltd or their clients guarantee their accuracy in any way. Consequently, these details are not to be used to form part of any legally binding contract. Prospective purchasers or tenants are advised to visit this property to satisfy themselves as to the correctness of these details. Please note, we use wide angle camera lenses in order to show as much of each room as possible. This is not intended to mislead any prospective purchasers or tenants in any way and an honest verbal description is always available prior to viewing if required.