

Ground Floor Flat 28 Shorncliffe Road

Folkestone
CT20 2NA

£250,000 LEASEHOLD

FOR SALE WITH BURNAP + ABEL... Welcome to your new home on Shorncliffe Road in Folkestone! This stunning upper ground floor flat offers the perfect combination of convenience and beauty. Just a short walk away from the high speed train station, commuting has never been easier. Step inside and be greeted by excellent decoration throughout, with two bedrooms providing ample space for relaxation. The bright and airy living room is perfect for entertaining guests or simply unwinding after a long day. Outside, you'll find yourself surrounded by stunning communal gardens, offering a peaceful escape right at your doorstep. Whether you're enjoying your morning coffee or hosting a summer BBQ, this outdoor oasis is sure to impress. Don't miss out on the opportunity to make this house your own with a share of freehold included.



Entrance Hall

Lounge

14' 7" x 14' 7" (4.45m x 4.45m)

Kitchen

9' 1" x 5' 2" (2.77m x 1.57m)

W.C

Bathroom

8' 5" x 5' 3" (2.57m x 1.60m)

Bedroom One

13' 6" x 11' 4" (4.11m x 3.45m)

Bedroom Two

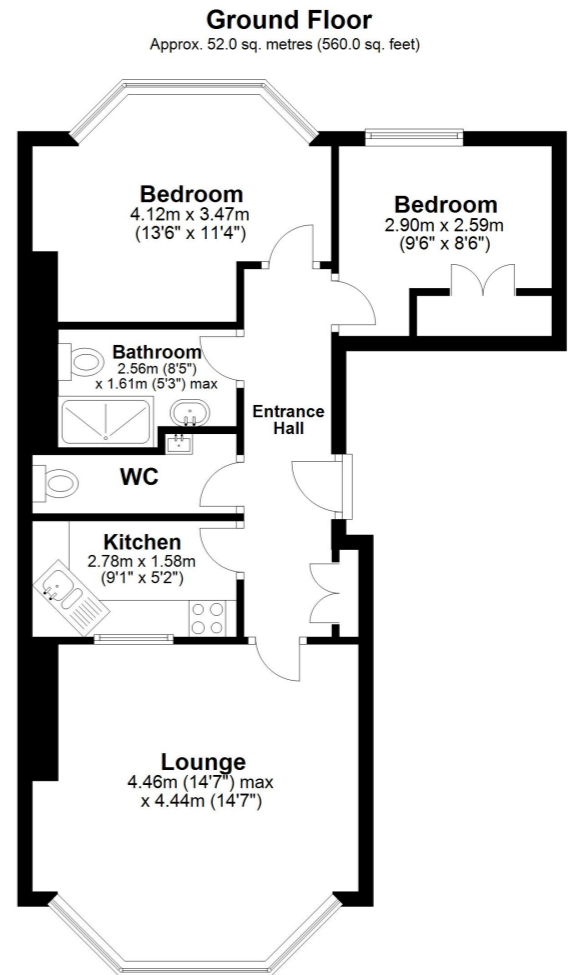
9' 6" x 8' 6" (2.90m x 2.59m)

Communal Garden

Lease + Service Charges

We understand the property owns a 50% share of the freehold.

The service charge for the property is approximately £800 per annum.



Whilst every attempt has been made to ensure the accuracy of the floor plan contained here, measurements of doors, windows, rooms and any other items are approximate and no responsibility is taken for any error, omission or mis-statement. This plan is for illustrative purposes only and should be used as such by any prospective purchaser.
Plan produced using PlanUp.

