



## Teignmouth Road, Willesden Green. NW2

- 2 Double Bedrooms
- 2 Bathrooms
- Wood Flooring
- Open Plan Reception / Kitchen
- Top Floor Flat
- Conservation Area



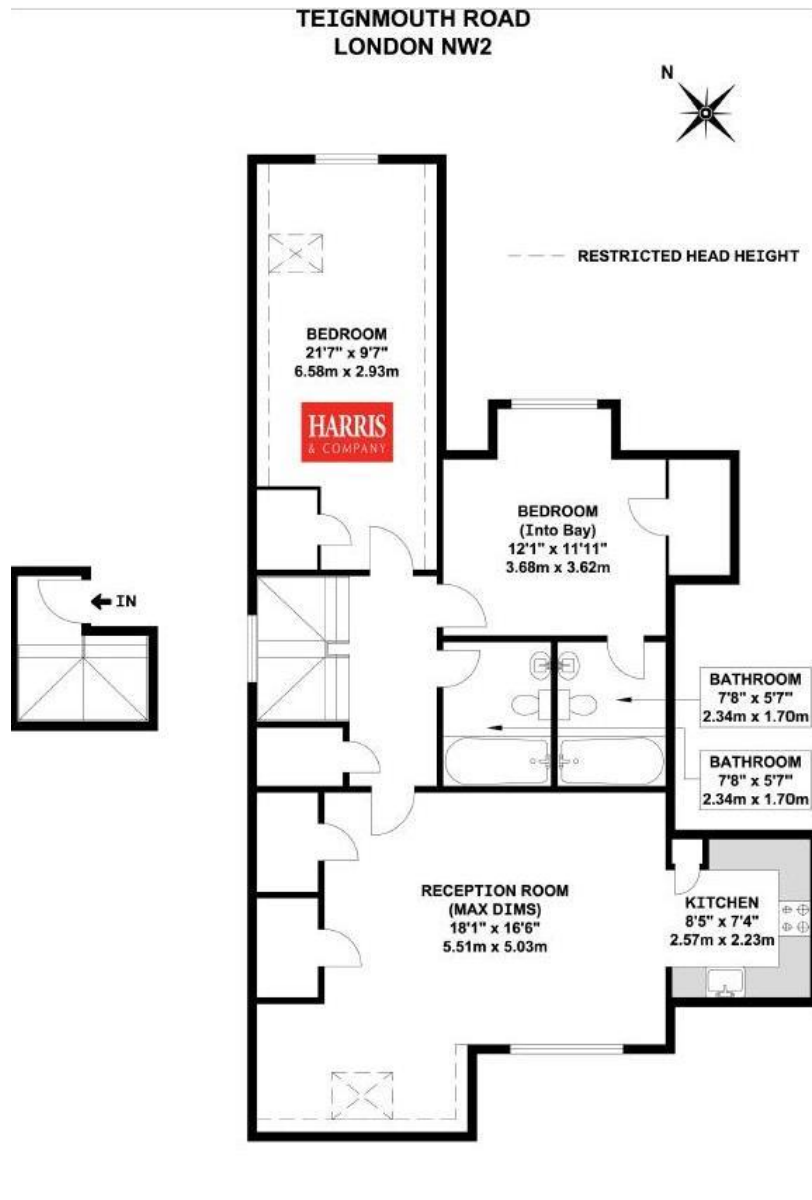
## PROPERTY DESCRIPTION

A spacious 2 double bedroom, 2 bathroom spanning the entire floor 2nd floor. The modern apartment includes a spacious open plan reception / kitchen with Quartz work tops and integrated appliances. Further benefiting 2 bathrooms (ensuite to the master bedroom) and wood flooring to most of the accommodation. Part furnished.

Available from 11th October 2025.

Location: Direct access to either Willesden Green or Kilburn tube stations (Jubilee line). Vibrant West End Lane., West Hampstead is easily accessible with its numerous eateries, bars and shops. Excellent Road access into Central London, Brent Cross (shopping centre) and M1 via A5 Edgware Road with its numerous bus routes.





Energy Efficiency Rating		
	Current	Potential
Very energy efficient - lower running costs		
(92+) <b>A</b>		
(81-91) <b>B</b>		
(69-80) <b>C</b>	74	74
(55-68) <b>D</b>		
(39-54) <b>E</b>		
(21-38) <b>F</b>		
(1-20) <b>G</b>		
Not energy efficient - higher running costs		
England, Scotland & Wales		
	EU Directive 2002/91/EC	