



GB





**72 Evelyn Crescent, Sunbury-on-Thames, Surrey TW16 6LZ**  
**£525,000 - Freehold**





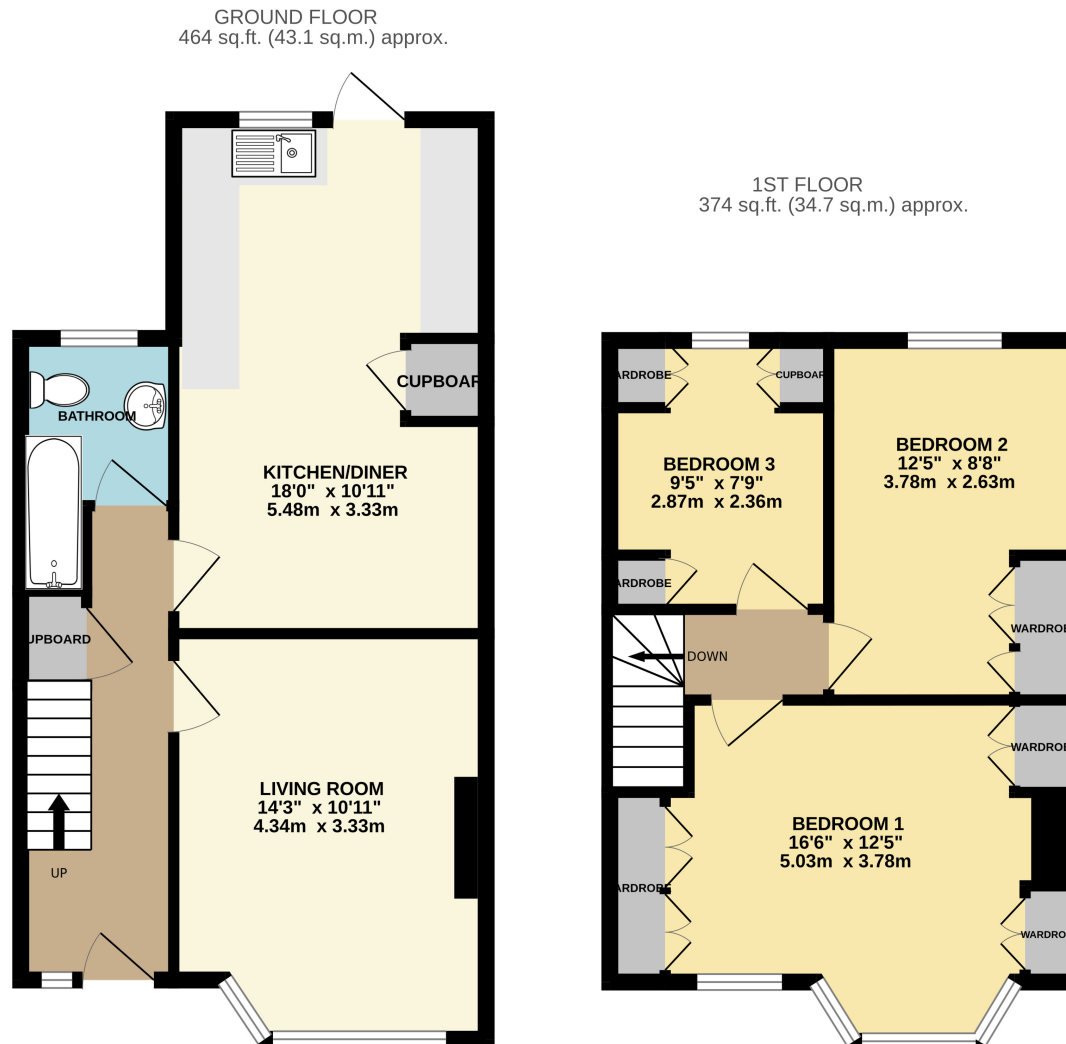
## PROPERTY DESCRIPTION

Gregory Brown are pleased to present this immaculately presented and superbly maintained family home, situated within this popular location and within an easy walk of upper Halliford and Sunbury train stations with local schools and shops nearby. The property consists of a good size living room, a spacious kitchen/diner, downstairs bathroom, upstairs there are three good size bedrooms, the property also provides off road parking to the front, the rear is a particular feature and comprises of a large patio area with well stocked and manicured flower beds, pedestrian rear access, there is also a utility shed adjacent to the kitchen extension. An internal viewing is strongly recommend via the vendors sole agents Gregory Brown

## POINTS OF INTEREST

- Immaculately maintained
- Three bedrooms
- Spacious kitchen/diner
- Good size living room
- Designer garden
- Viewing strongly recommended
- Superbly presented
- Popular location





TOTAL FLOOR AREA : 837 sq.ft. (77.8 sq.m.) approx.

Whilst every attempt has been made to ensure the accuracy of the floorplan contained here, measurements of doors, windows, rooms and any other items are approximate and no responsibility is taken for any error, omission or mis-statement. This plan is for illustrative purposes only and should be used as such by any prospective purchaser. The services, systems and appliances shown have not been tested and no guarantee as to their operability or efficiency can be given.

Made with Metropix ©2025

