



242 Worplesdon Road, Guildford, Surrey. GU2 9UY

- NO Onward Chain
- Three Bedrooms
- Lounge
- Dining Room
- Fitted Kitchen
- Gas Central Heating
- Double Glazed
- Enclosed Rear Garden
- Must Be Seen
- Convenient Location



PROPERTY DESCRIPTION

This well presented, conveniently located home comes to the market offering a separate lounge, dining room and fitted kitchen on the ground floor whilst the first floor benefits from three bedrooms and bathroom. Further benefits include gas central heating, double glazing and enclosed rear garden. Local amenities are nearby as are bus routes but to fully appreciate the accommodation viewings are highly recommended .NO ONWARD CHAIN.



ROOM DESCRIPTIONS

Ground Floor

Entrance Hall

Stairs to first floor landing, doors to:

Lounge

Front aspect double glazed window, radiator

Dining Room

Rear aspect double glazed doors, radiator

Kitchen

Rear aspect double glazed window, range of units, space for appliances

First Floor

Landing

Doors to:

Bedroom

Front aspect double glazed window, radiator

Bedroom

Front aspect double glazed window, radiator

Bedroom

Rear aspect double glazed window, radiator

Bathroom

Double glazed window, low level w.c, wash hand basin , panel enclosed bath.

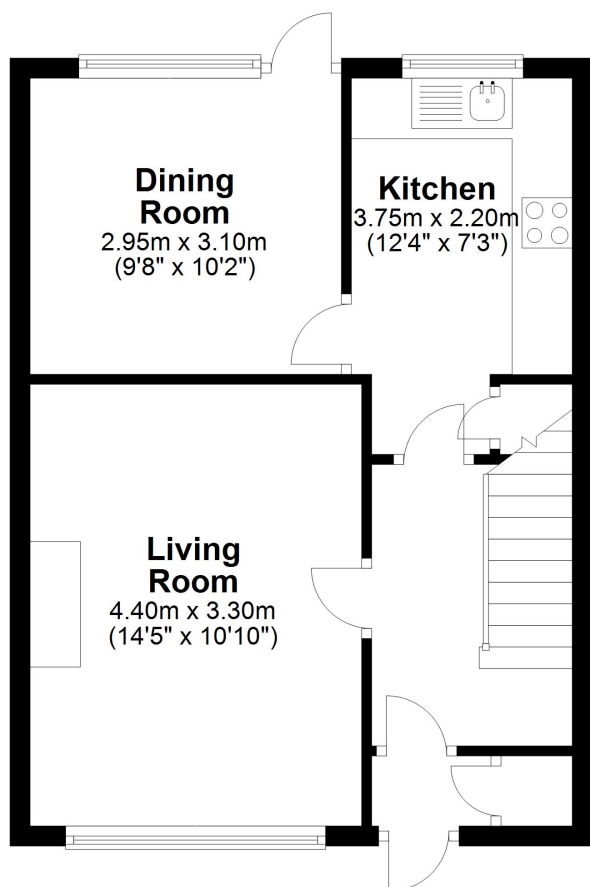


FLOORPLAN



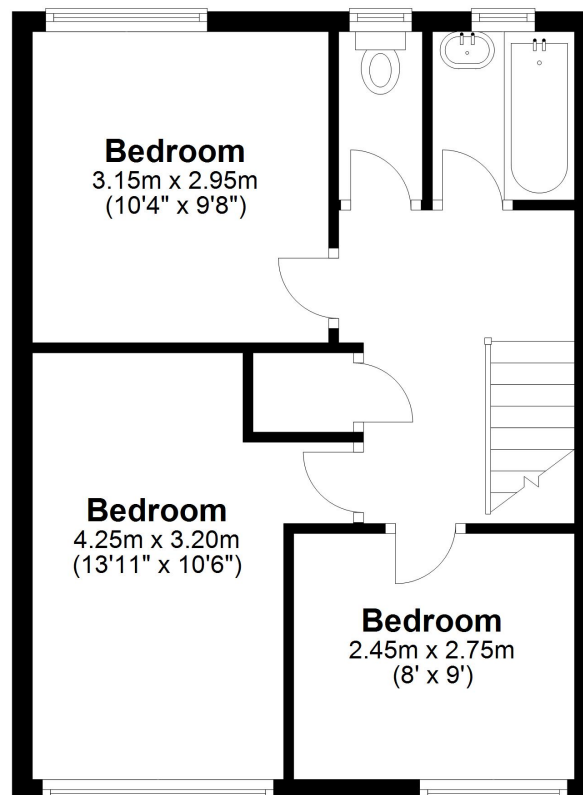
Ground Floor

Approx. 40.2 sq. metres (432.7 sq. feet)



First Floor

Approx. 40.2 sq. metres (433.1 sq. feet)



Total area: approx. 80.4 sq. metres (865.8 sq. feet)