



28 Tithe Farm Close, Langford, Biggleswade, Bedfordshire, SG18 9NE

£650,000

Four-bedroom detached family home situated at the end of a cul-de-sac in a private, quiet courtyard setting of just four properties. Welcoming hallway leading to a spacious lounge with casement doors to the garden plus separate dining room. There is also a large kitchen/breakfast room again overlooking the mature west facing secluded garden. Upstairs are four bedrooms with an en-suite to the master and a family bathroom. Outside are generous gardens which are a feature to the property and off road parking is provided by a double width driveway and single garage.

Lane &
BENNETTS

Approximate Gross Internal Area
 Ground Floor = 57.7 sq m / 621 sq ft
 First Floor = 57.6 sq m / 620 sq ft
 Garage = 15.0 sq m / 161 sq ft
 Total = 130.3 sq m / 1,402 sq ft



- FOUR BEDROOM DETACHED
- QUIET COURTYARD CUL-DE-SAC LOCATION
- LARGE LOUNGE & SEPERATE DINING ROOM
- KITCHEN/BREAKFAST ROOM
- EN-SUITE & FAMILY BATHROOM
- MATURE SECLUDED WEST FACING GARDEN
- GARAGE + DOUBLE WIDTH DRIVEWAY
- EASY ACCESS TO A1 & LOCAL TRAIN STATION
- COUNCIL TAX BAND F / EPC C

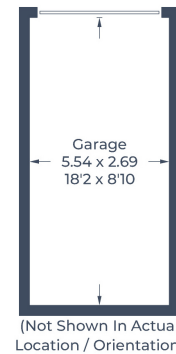
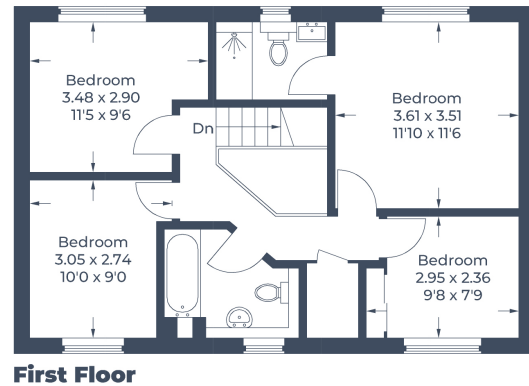
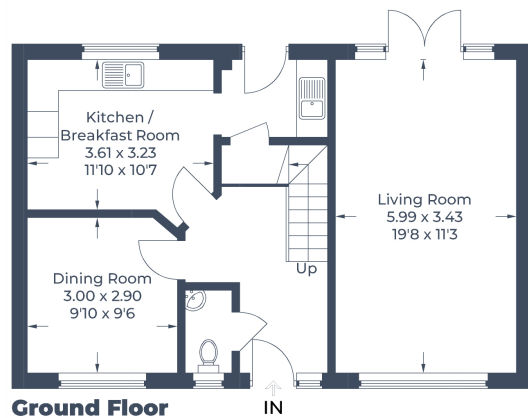


Illustration for identification purposes only,
 measurements are approximate, not to scale.
 © CJ Property Marketing Produced for Lane & Bennetts

