



Guide Price £350,000 Freehold



27 Chardwell Close, Beckton, London E6  
5RR



## PROPERTY DESCRIPTION

GUIDE PRICE £350,000 - £365,000 • RE/MAX SELECT are delighted to offer for sale this well presented semi-detached house, close to schools, amenities, and transport links including Beckton Park station.

This stunning property comprises 2 double bedrooms, open-plan kitchen/dining/living room, and upstairs family bathroom.

Further benefits include double glazing, gas central heating, and 220 sqft garden (approx).

Total Internal Area approx: 575.65 sq ft (53.48 sq m).





## ROOM DESCRIPTIONS

### Ground Floor

#### Living Room / Dining Room

Hardwood flooring, radiator; dual-aspect, double glazed windows; double glazed patio doors leading to garden.

#### Kitchen

Hardwood flooring, double glazed windows; range of wood wall and base units; stainless steel sink with mixer tap; oven, electric hob, integrated fridge, integrated freezer; space and connections for dishwasher; space and connections for washing machine.

### First Floor

#### Landing

Hardwood flooring.

#### Bedroom

Hardwood flooring, radiator, double glazed windows, fitted wardrobes.

#### Bathroom

Underfloor heating, tiled flooring, double glazed windows; large walk-in shower enclosure; wash-hand basin with mixer tap; w/c, heated towel-rail.

### Second Floor

#### Bedroom

Hardwood flooring, velux window, fitted wardrobes, eaves storage.

### External

#### Rear Garden

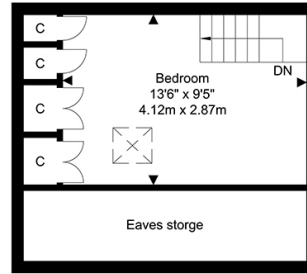
Approximately 220 sqft (20ft x 11ft at widest points); patio area; storage shed; side access.

#### Information

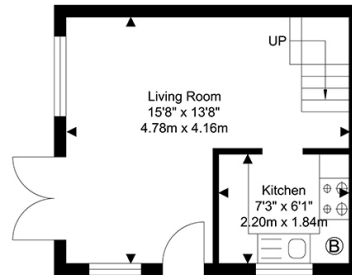
- 0.3 miles (approx) to Beckton DLR Station
- 0.6 miles (approx) to London City Airport
- 0.1 miles (approx) to Beckton Park
- 0.9 miles (approx) to ExCel London

- Council Tax: Band C

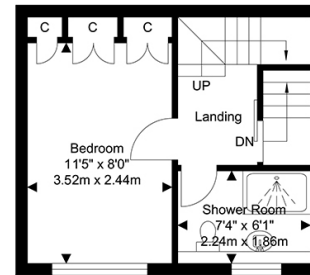
# FLOORPLAN



Second Floor  
Approximate Floor Area  
147.68 SQ.FT.  
(13.72 SQ.M.)



Ground Floor  
Approximate Floor Area  
213.98 SQ.FT.  
(19.88 SQ.M.)



First Floor  
Approximate Floor Area  
213.98 SQ.FT.  
(19.88 SQ.M.)

TOTAL APPROX FLOOR AREA 575.65 SQ. FT / 53.48 SQ. M  
For Identification Purposes Only.

