



25 Honister Walk, Camberley, Surrey GU15 1RQ

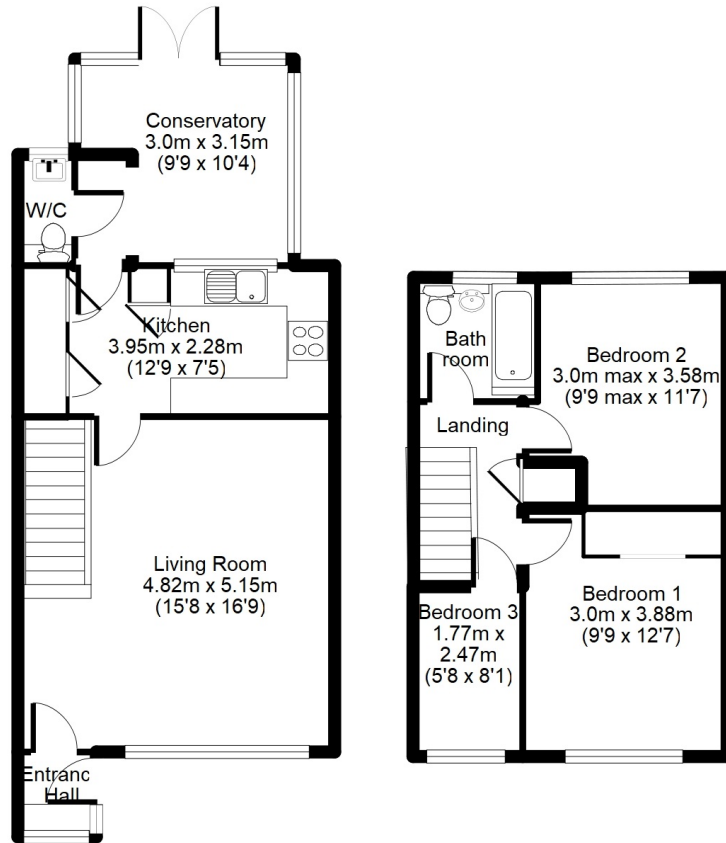
£375,000 Freehold

Jigsaw Estates are pleased to offer this well presented, terraced, family home. It is ideally situated on the popular Heatherside development, within walking distance of a number of local schools, including; Heather Ridge, Ravenscote & Tomlinscote. There are also local shops on the development as well as a dentists and doctors surgery. Ground floor accommodation comprises; lounge/dining room, W.C, kitchen and a conservatory which overlooks the rear garden. First floor accommodation comprises; three bedrooms and a bathroom. The property is located on a walkway and benefits from a garage in a nearby block. There is communal parking a stones-throw away from the property. Viewings are highly recommended.



- THREE BEDROOMS
- TERRACED
- CONSERVATORY
- POPULAR HEATHERSIDE DEVELOPMENT

- GARAGE IN A NEARBY BLOCK
- LARGE LOUNGE/DINING ROOM
- DOWNSTAIRS W.C
- GAS CENTRAL HEATING



Floorplan is for illustration purposes only.
All measurements are approximate and should be verified.

Energy Efficiency Rating

	Current	Potential
Very energy efficient - lower running costs		
(92 to 100) A		
(81 to 91) B		88
(69 to 80) C		
(55 to 68) D	56	
(39 to 54) E		
(21 to 38) F		
(1 to 20) G		
Not energy efficient - higher running costs		
England, Wales & N.Ireland		EU Directive 2002/91/EC

