

32 St Johns Road, Petts Wood, Orpington, Kent, BR5 1HX

## Property Images





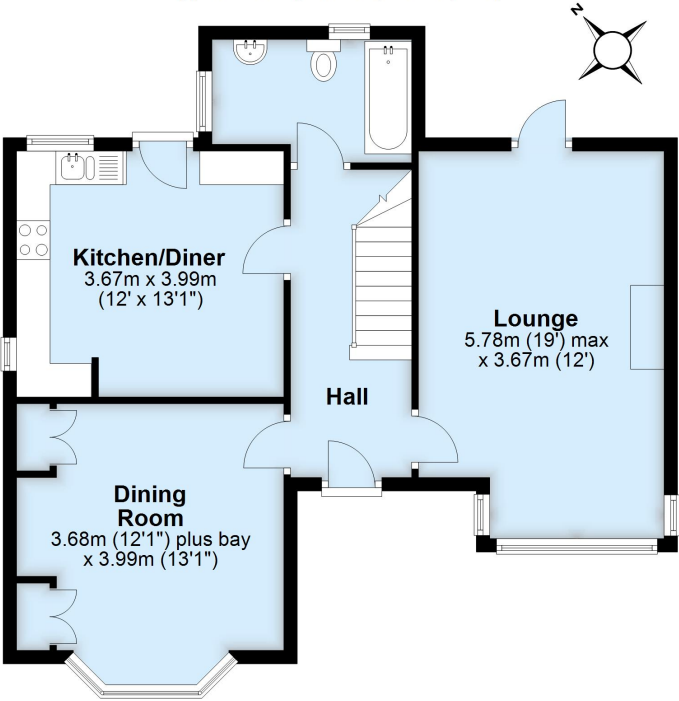






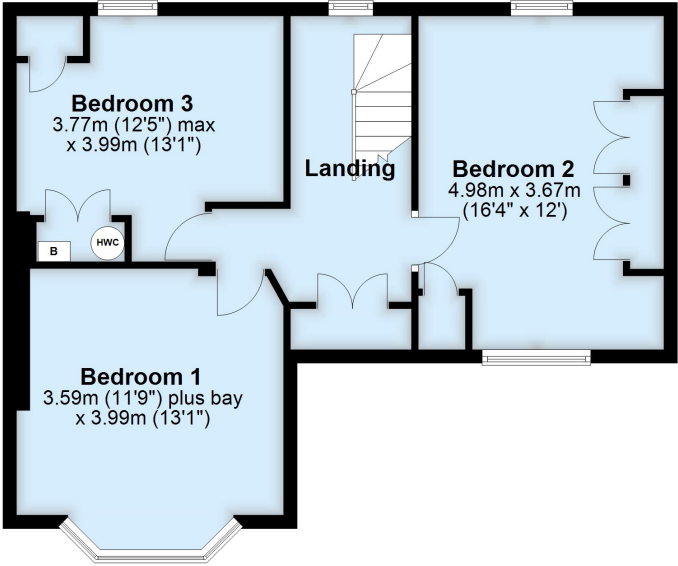
**Ground Floor**

Approx. 65.0 sq. metres (699.5 sq. feet)



**First Floor**

Approx. 58.3 sq. metres (627.7 sq. feet)



Total area: approx. 123.3 sq. metres (1327.1 sq. feet)

This plan is for general layout guidance and may not be to scale.  
Plan produced using PlanUp.