

C001 W3 Westmount Road, St Helier. JE2 3BL

£515,000 Freehold

FOR SALE



PROPERTY DESCRIPTION

Spacious purpose-built, two bedroom, two bathroom, ground floor apartment in the sought-after Westmount development situated close to a large park and the beach. Internally this great property offers a practical open plan layout with two double bedrooms and two large bathrooms. The unique feature of this property is the large patio garden (in fact it is the largest ground floor patio in the building). There is also a huge communal roof terrace, one designated undercover parking space and an on-site gym. Ideal both as a first time buyer home or for perfect for a downsizer. No onward chain. Sole agent.

FEATURES

- Ground floor patio apartment
- Largest patio of all the lower floors
- Secure under cover parking plus storeroom
- Close to beach and park
- Ground floor 2bed 2bath apartment
- No onward chain



ROOM DESCRIPTIONS

Directions

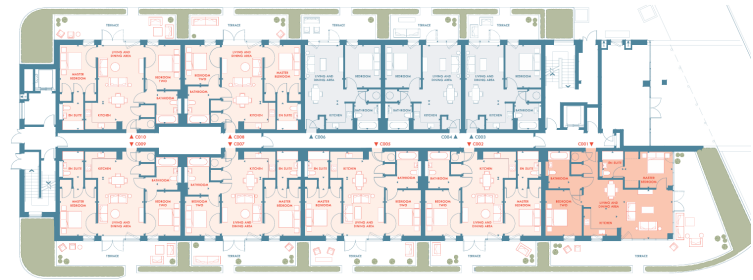
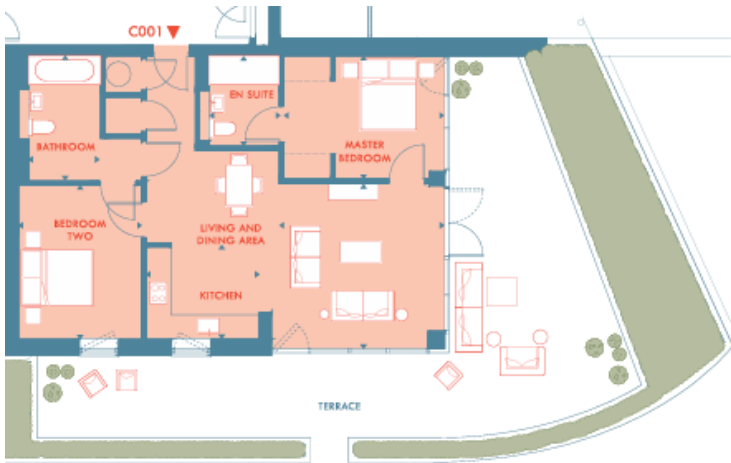
At People's Park, turn up Westmount, the development is on RHS. The apartment is on the ground floor of the 3rd building W3. <https://w3w.co/hotels.changed.petted>







FLOORPLAN



TWO BEDROOM APARTMENTS		ONE BEDROOM APARTMENTS	
C001	71.14 Sq.m	C002 C003 C007	42.78 Sq.m
LIVING AND DINING AREA	4.2m x 4.0m	C004 C005 C010	3.7m x 4.6m
KITCHEN	2.2m x 2.5m	LIVING AND DINING AREA	2.9m x 2.1m
MASTER BEDROOM	3.7m x 3.0m	KITCHEN	2.0m x 2.1m
		MASTER BEDROOM	2.9m x 3.8m
		BEDROOM	2.9m x 3.3m

