



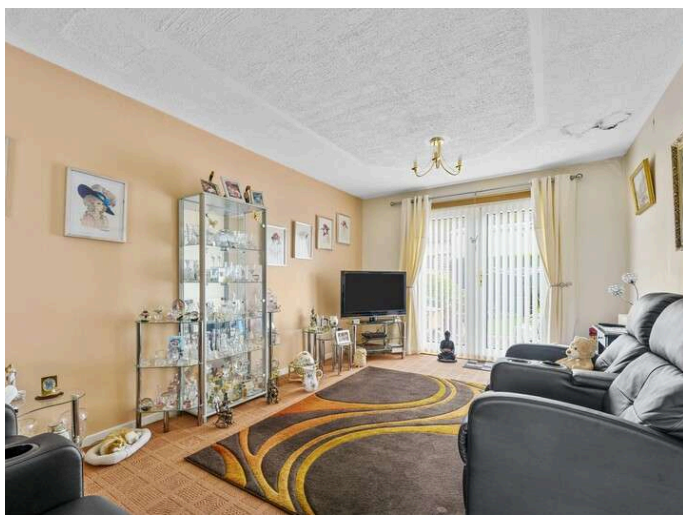
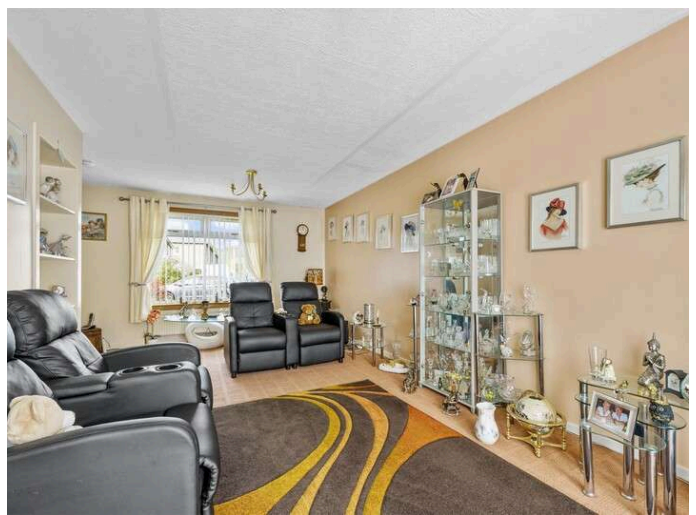
Solicitors & Estate Agents

40

Meadow View, Crossford, KY12 8NT



Working harder for you



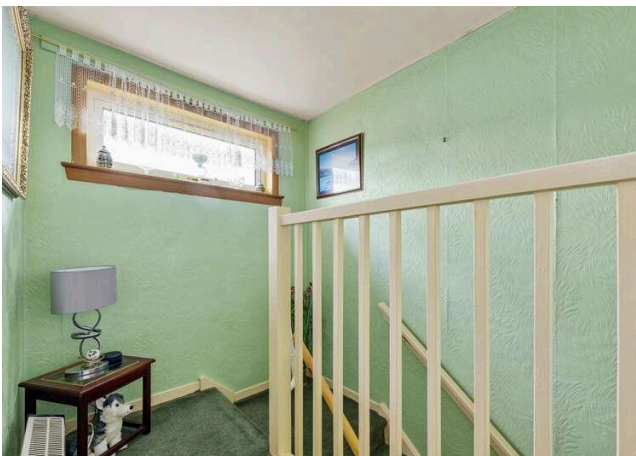
3 bedrooms



1 public



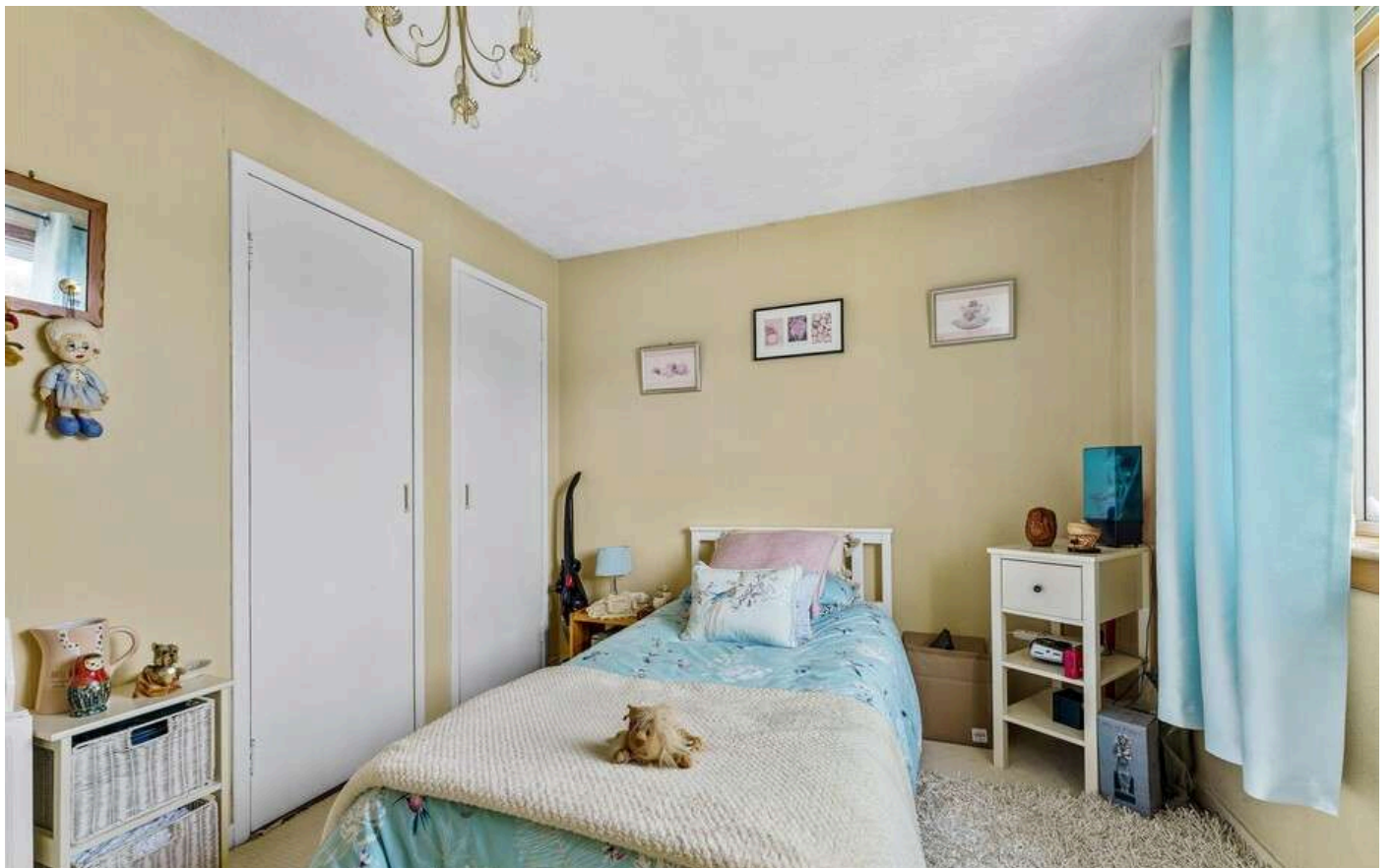
1 bathroom

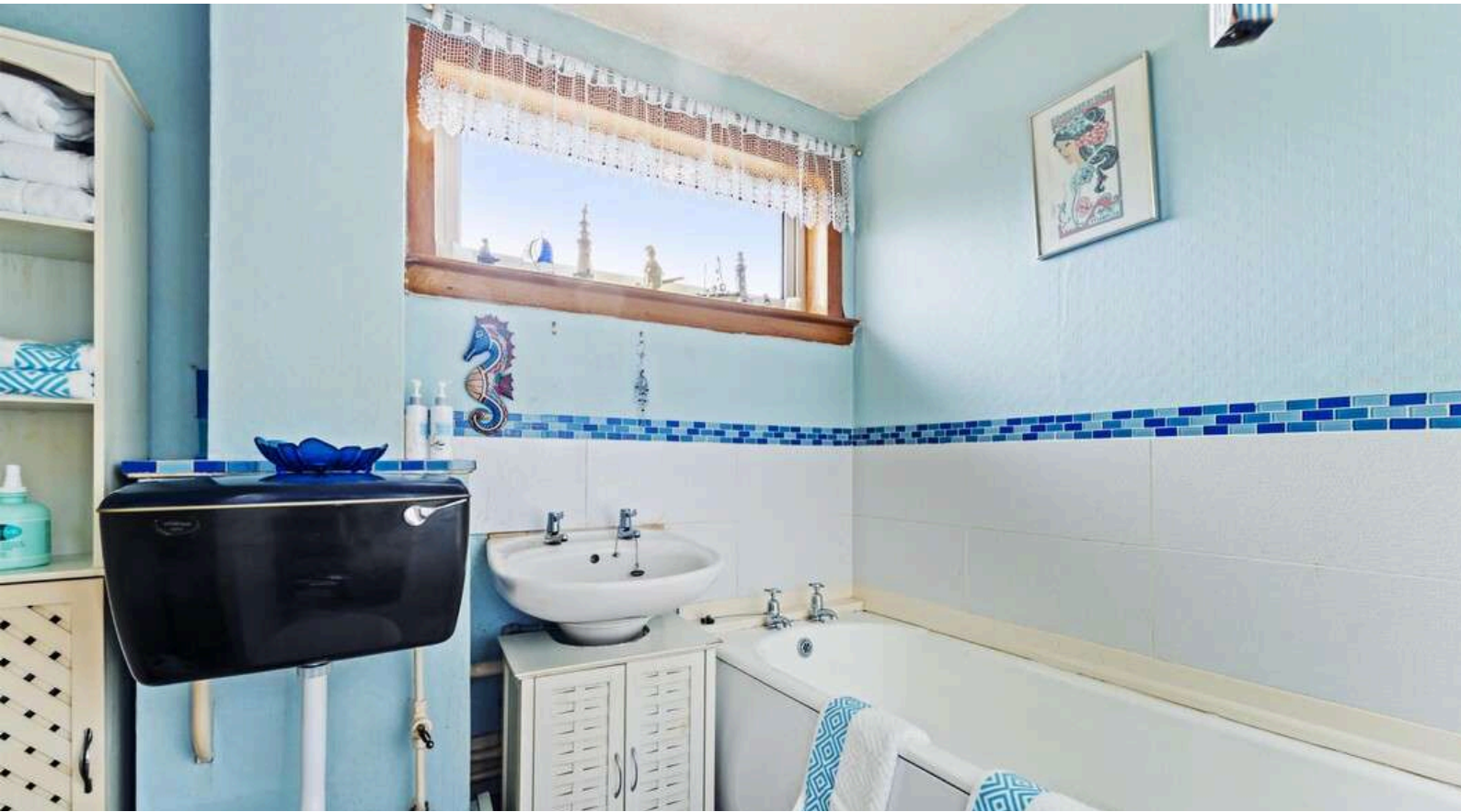


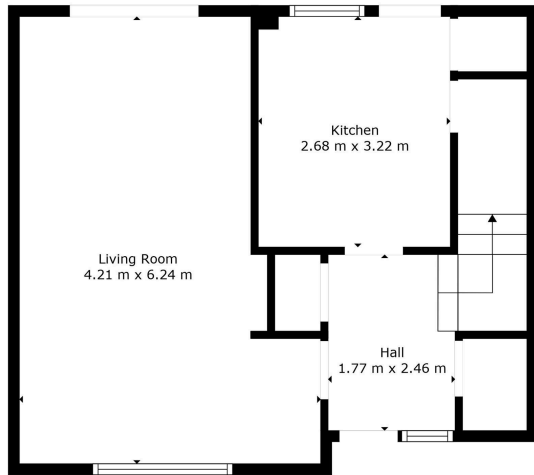
- + Spacious, three bedroom terraced villa located within a quiet residential cul-de-sac
- + Highly sought after, Crossford offers several convenience store, food and drink at the Adamson Hotel and leisure facilities at the Keavil House Hotel
- + Dunfermline City Centre circa one mile away with a further range of amenities including restaurants, bars and a variety of shops.
- + Transport links include a local bus service, train stations within Dunfermline, Rosyth and Inverkeithing and commuting to both Edinburgh and Glasgow
- + Entrance hall with storage leading to a full length lounge with French doors leading to gardens
- + Breakfast kitchen with a good selection of storage and white goods
- + Family bathroom with three piece suite
- + Three double bedrooms with built in wardrobe space available within bedroom three
- + Gardens to the front and rear
- + A fantastic first time home
- + EPC Rating -
- + Council Tax Band - B



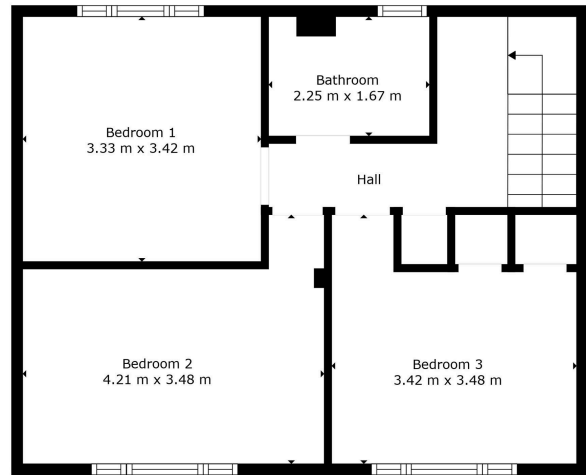








Floor 1



Floor 2



Floor Plan Created By Cubicasa App. Measurements Deemed Highly Reliable But Not Guaranteed.



| | | | |
|----------------|----------------------------------|-----------|---------------------------------|
| Hall / Landing | 1.77 m x 2.46 m / 5'10" x 8'1" | Bedroom 3 | 3.42 m x 3.48 m / 11'3" x 11'5" |
| Living Room | 4.21 m x 6.24 m / 13'10" x 20'6" | Bathroom | 2.25 m x 1.67 m / 7'5" x 5'6" |
| Kitchen | 2.68 m x 3.22 m / 8'10" x 10'7" | | |
| Bedroom 1 | 3.33 m x 3.42 m / 10'11" x 11'3" | | |
| Bedroom 2 | 4.21 m x 3.48 m / 13'10" x 11'5" | | |



Sharing is caring!

6/8 Bonnar Street,
Dunfermline KY12 7JR

T: 01383 629720 F: 01383 621333, DX DF69



W: maloco.co.uk