



9 Whittle Court,
Knowlhill, Milton Keynes, MK5 8FT

Tel: 01908 231 551



mail@elevationstateagents.com



**28 Bow Road, Brooklands, Milton Keynes,
Buckinghamshire, MK10 7GN**

£665,000 Freehold

- 5 bedroom detached
- Garage & driveway
- Kitchen diner and utility
- Air conditioning
- South facing enclosed garden
- Electric Car Charging Point
- Utility & Cloakroom
- Downstairs study
- Top floor master bedroom with dressing area & en-suite
- Sough after area of Broughton



See our full selection of properties online at www.elevationstateagents.com



Disclaimer

Whilst we have endeavoured to prepare our sales particulars accurately none of the services, appliances or equipment have been tested. A buyer should satisfy themselves on such matters prior to purchase. Any measurements or distances mentioned in these particulars are for guide reference only. If such particulars are fundamental to a purchase, buyers should rely on their own enquiries. All enquiries should be directed to Elevation Estate Agents in the first instance.

This stunning 5-bedroom detached house in the highly desirable area of Broughton offers an exceptional blend of modern living, stylish design, and family-friendly features. With ample living space, this beautifully presented home is perfect for growing families and those who love to entertain, offering the ideal balance of comfort and luxury.

The heart of the home is the expansive, extended kitchen-dining area, flooded with natural light and fully equipped with modern appliances, including a water filter softener and sleek countertops. The underfloor heating system ensures warmth throughout the ground floor, while the air-conditioning heating system provides year-round comfort. The kitchen-diner is perfect for hosting family gatherings, while a separate utility room and downstairs cloakroom add convenience and practicality. The spacious lounge features a stunning feature wall and electric fireplace, creating a welcoming space for relaxation.

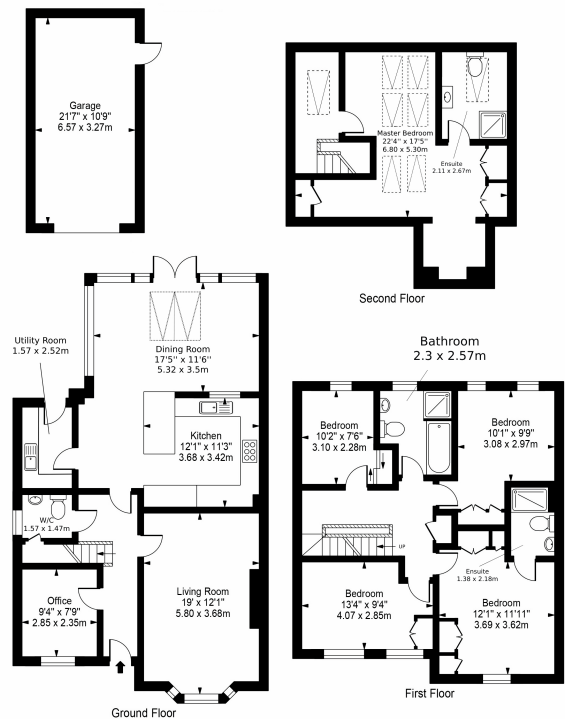
Upstairs, the property boasts four generously sized double bedrooms, each with built-in wardrobes and there is also a large 4-piece family bathroom with modern fittings. The top floor hosts the master bedroom, complete with a luxurious en-suite, a dressing room, a dedicated makeup studio, and a skylight that floods the space with light.

The low-maintenance, south-facing rear garden is the perfect outdoor retreat, offering privacy and tranquillity, with ample space for both relaxation and play. Additional highlights of this property include a security system throughout, an electric car charger, and ample storage throughout the house.

Located in the vibrant and sought-after community of Broughton, this property offers easy access to local amenities, excellent schools, and convenient transport links. Whether you're looking for a home with space to grow, modern comforts, or a stylish residence to entertain guests, this property has it all.

Don't miss your chance to make this stunning house your home! Contact us today to arrange a viewing and see everything this fantastic property has to offer.

Approx. Gross Internal Area 2105 Sq Ft - 195.54 Sq M
(Excluding Garage)
Approx. Gross Internal Area Of Garage 231 Sq Ft - 21.48 Sq M



For Illustration Purposes Only - Not To Scale

This floor plan should be used as a general outline for guidance only and does not constitute in whole or in part an offer or contract. Any intending purchaser or lessee should satisfy themselves by inspection, searches, enquiries and full survey as to the correctness of each statement. Any areas, measurements or distances quoted are approximate and should not be used to value a property or be the basis of any sale or let.