

TO LET

£875 pcm



Meridian Bay, Trawler Road, Maritime Quarter, Swansea, West GlamorganSA1

- One Bedroom Apartment
- Seafront Location
- Partial Sea Views
- Electric Heating
- Second Floor with Lift Access
- No Allocated Parking



Bay Estate Agents Ltd
29, Camona Drive, Maritime Quarter, Swansea, SA1 1YJ

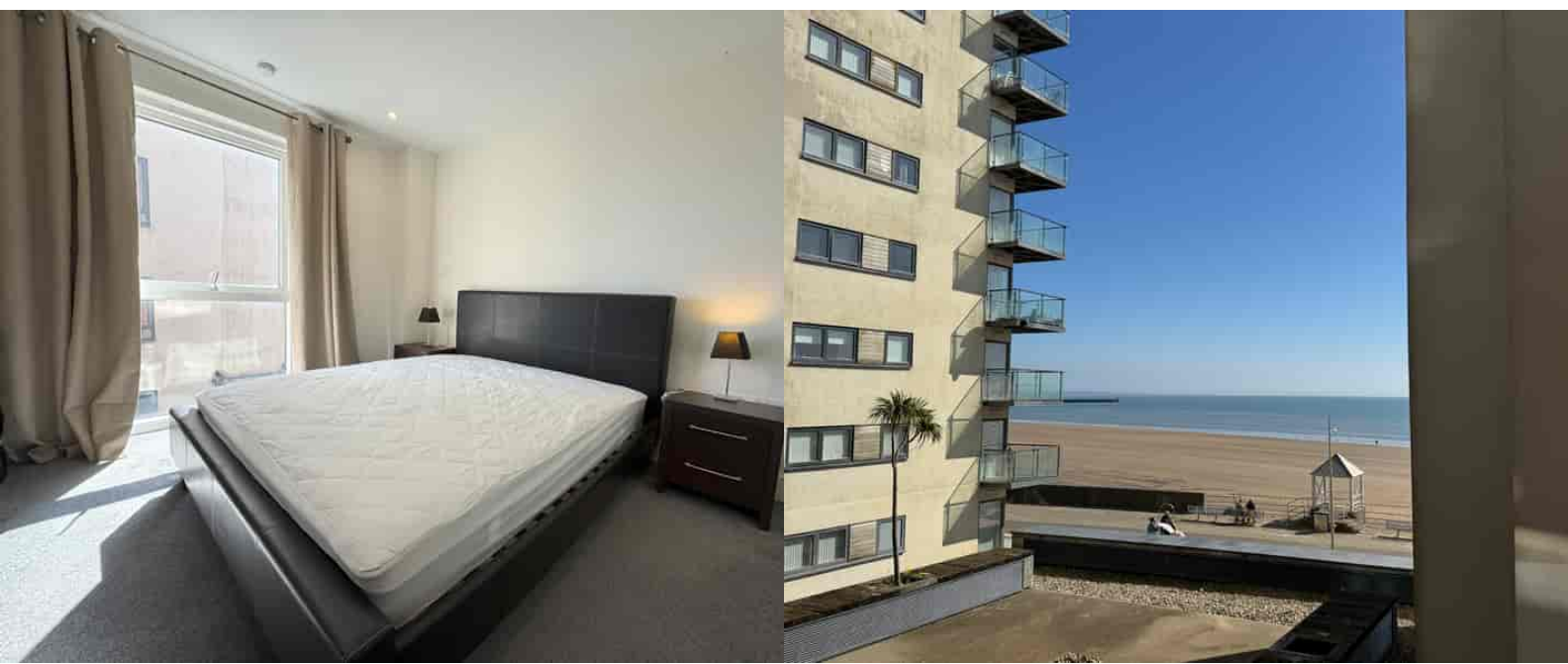
01792 645566
mail@bayestateagents.com



PROPERTY DESCRIPTION

Bay is delighted to offer for rental, this well-presented one bedroom apartment situated in the Maritime Quarter's Meridian Development, adjacent to the seafront promenade. The apartment is situated on the second floor with lift access and benefits from partial sea views from the living room and bedroom. The apartment briefly comprises an entrance hallway with storage cupboard, an open-plan living room with Juliet balcony and adjoining kitchen with integrated appliances, double bedroom with fitted wardrobes, and family bathroom with shower. Electric heating and security door entry system. No allocated parking. Virtual viewing video available!

Security Deposit: £ 1.312.50 Term: 6 Months (+) Council Tax: Band D Requested
Holding Deposit: £201 EPC Rating: B



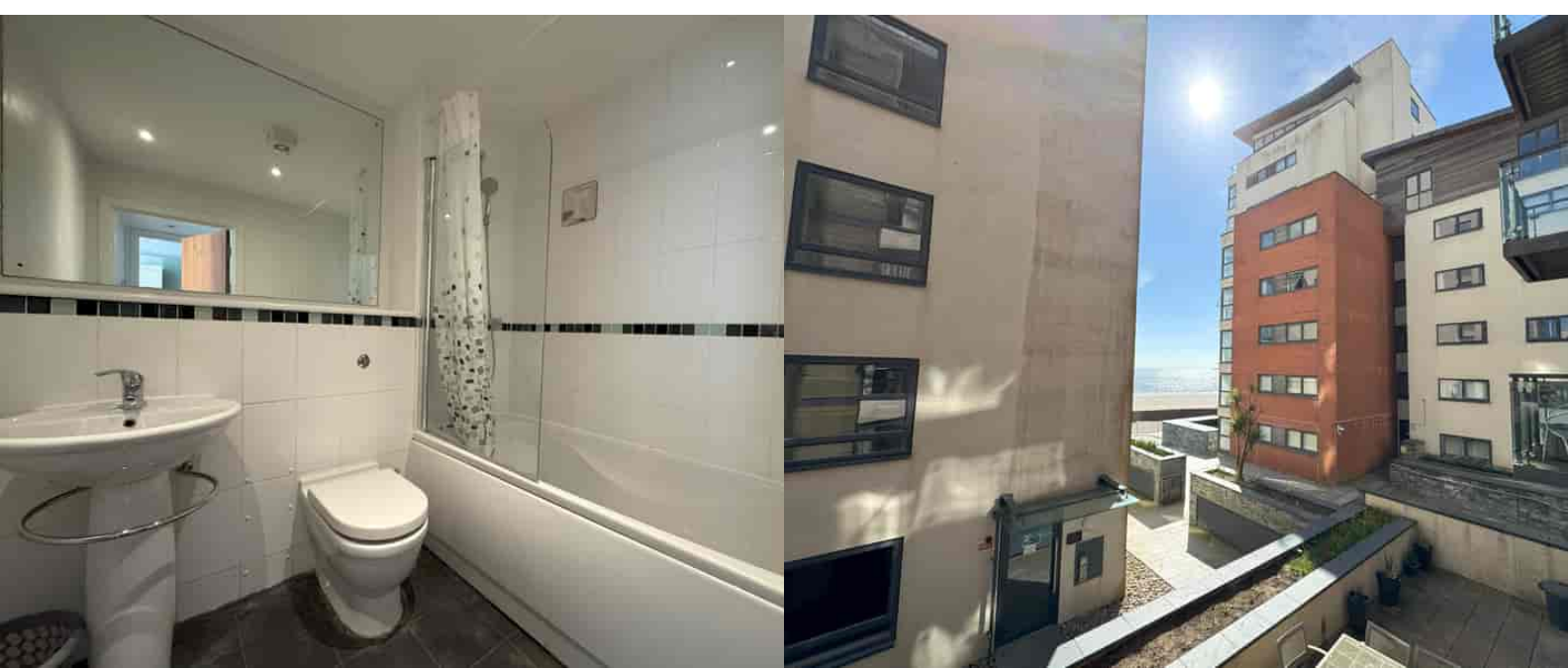
ROOM DESCRIPTIONS

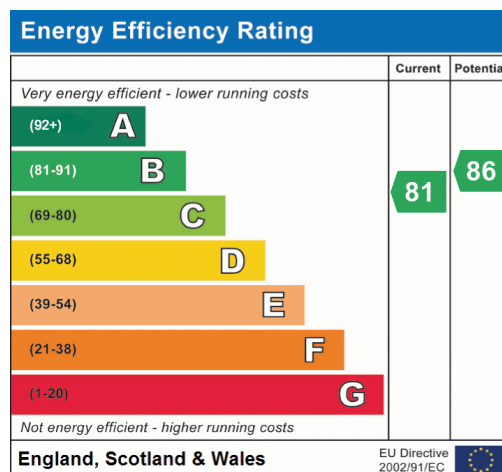
Lounge (Reception)

Bathroom

Bedroom

Kitchen





Bay Estates & Lettings Agents

29, Camona Drive, Maritime Quarter, Swansea, SA1 1YJ
01792 645566
mail@bayestateagents.com