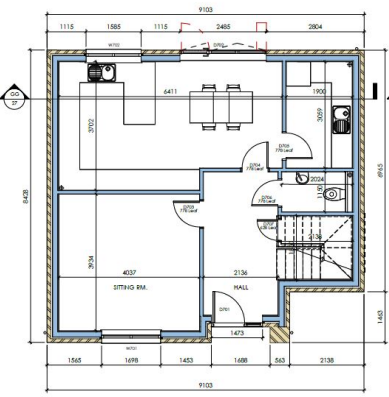
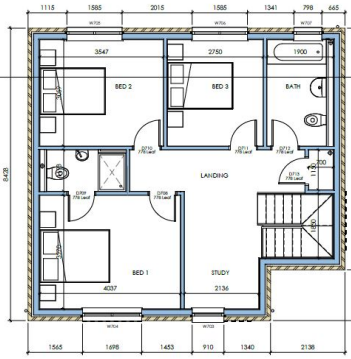




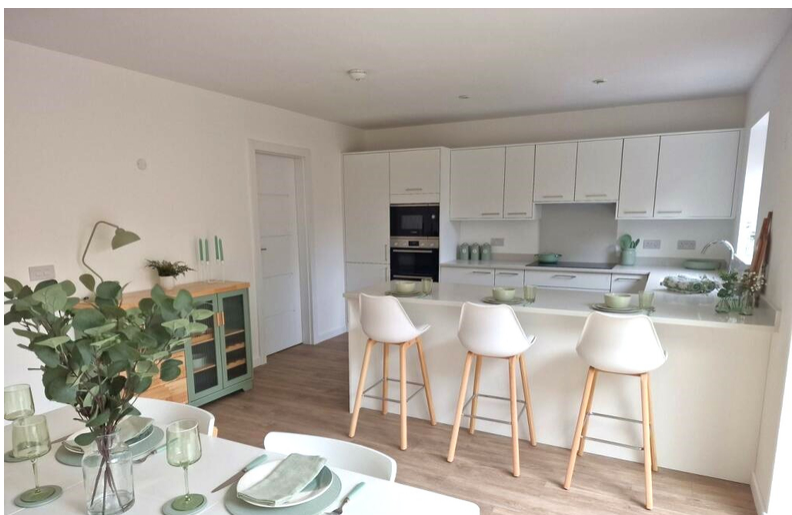
The Chelsea - Plot 7 Cobden Avenue, Peterborough, Cambridgeshire PE3 2QJ £209,000



GROUND FLOOR PLAN
1:50



FIRST FLOOR PLAN
1:50



*** THE CHELSEA - PLOT 7 - THREE BEDROOM FAMILY HOME WITH STUDY AREA *** A unique development of 9 Spacious Homes located in the heart of the city. A large kitchen and open-plan dining area with bi-fold doors, spacious sitting room & wide entrance hallway are signature features across this development.

COBDEN AVENUE

A unique development of 9 Spacious Homes located in the heart of the city. A large kitchen and open-plan dining area with bi-fold doors, spacious sitting room & wide entrance hallway are signature features across this development.

With underfloor heating as standard and energy efficient Air Source Heat Pumps you can expect to enjoy lower energy bills in your brand new home. The smart heating can be controlled from your phone and with every house being connected to high speed BT fibre broadband you can work smarter from home and enjoy faster streaming for your entertainment.

Every home comes with wired internet connections to all main rooms and bedrooms, USB-C sockets supporting fast charging, integrated kitchen appliances, washing machine & tumble drier, wireless thermostat and security camera, video doorbell, 2 parking spaces, an EV car charger and dedicated bicycle store in the garden.

THE CHELSEA

The largest detached house on the development, The Chelsea is a unique property with a bespoke feel.

In addition to the three generous double bedrooms, there is a study which could also serve as a useful 4th bedroom. There is also the added benefit of a generous first floor landing which could function well as a work from home space or an occasional seating area

AGENTS NOTE

These particulars are for reference only. Government schemes are at the discretion of the third parties and neither Rosedale nor the vendor has any influence. Specifications for individual dwellings vary and you should check final details prior to committing to a purchase. All images including maps and floor plans are for reference only and are not to scale and may not be of the specific plot and are only for marketing purposes.

