



FOR SALE

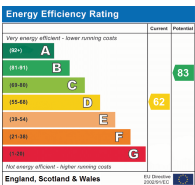


Grosvenor Crescent, London NW9

MAKE YOUR MOVE !!

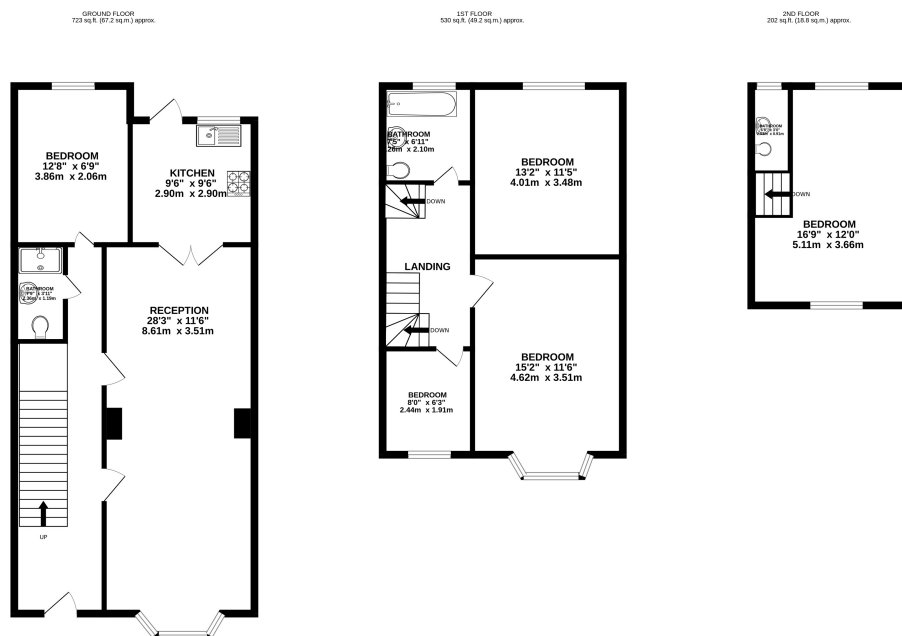
A lovely family home on one of Kingsbury's most sought-after roads. This five-bedroom extended house is spacious throughout. The ground floor has a through lounge and an extended kitchen/dining room. Set over three floors, this home has 5 bedrooms and 3 bathrooms. The kitchen opens onto the garden, where you will find a fully well maintained garden with a perfect addition of a double garage situated at the rear with an additional 2 car parking spaces via a private access road.

The area boasts highly rated schools, ensuring excellent educational opportunities for children, while adults appreciate the variety of local shops, cafes, and restaurants that contribute to the community's vibrant local scene. Within close distance of Kingsbury station (Jubilee Line).



£695,000 Freehold

Floorplan



TOTAL FLOOR AREA: 1455 sq. ft. (135.2 sq.m.) approx.

Whilst every attempt has been made to ensure the accuracy of the floorplan contained here, measurements of doors, windows, rooms and any other items are approximate and no responsibility is taken for any error, omission or mis-statement. This plan is for illustrative purposes only and should be used as such by any prospective purchaser. The services, systems and appliances shown have not been tested and no guarantee as to their operability or efficiency can be given.
Made with Metropix ©2025

NB: Please note that all fittings, kitchen appliances and heating systems have not been tested by Mishca & Co Sales & Lettings. Whilst we endeavour to make our sales details accurate and reliable. Room sizes should not be relied upon for carpets and furnishings. If there is any point, which is of particular important to you, please contact our office and we will be pleased to verify any information for you. Do so particularly if contemplating travelling some distance to view this property.