





- Stylish & Contemporary Home
- Lounge
- Kitchen Dining Room
- Three Bedrooms
- Two Bath/Shower Rooms
- Low Maintenance Garden
- Parking for Two Cars

Description

A stylish and contemporary home on a popular development. The property is decorated to a high standard and features an upgraded bathroom, en-suite shower room and cloakroom. With gas central heating and PVCu double glazed windows the accommodation comprises: Entrance hall, lounge, cloakroom/WC, kitchen dining room, first floor landing, three good size bedrooms, en-suite shower room and bathroom. Outside there are two parking spaces to the side of the house and there is a low maintenance garden to the rear with patio area, artificial grass, timber built bar, decking area with pagoda and shed.



Location

Local amenities are well catered for with shops at the local centre on Winnington Urban Village, which offer everything you could want or need. Winnington Park Community Primary School (Ofsted Good) serves the area and there are two local high schools located in Hartford and Weaverham. Three railway stations serve the area with the West Coast Main Line service running through Hartford, enabling access to London within two hours. Trains to Manchester and Chester run from Northwich and Greenbank stations. The A556 and A49 easily facilitate access to the region’s major road network with Manchester and Liverpool airports both within 20 miles. Nearby Northwich caters for a more comprehensive range of amenities, including leading supermarkets with Waitrose, Sainsbury’s and Tesco all represented.

Tenure

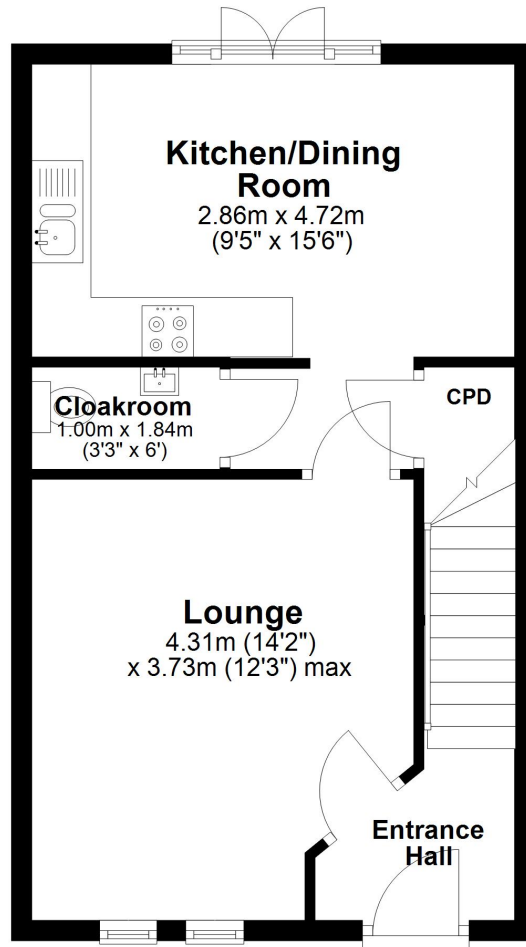
LEASEHOLD

EPC Rating:



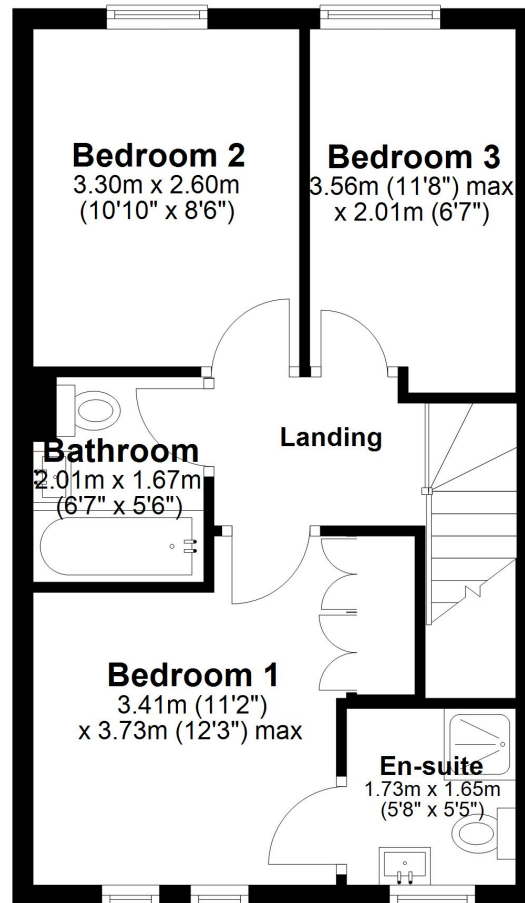
Ground Floor

Approx. 39.4 sq. metres (424.6 sq. feet)



First Floor

Approx. 39.4 sq. metres (424.6 sq. feet)



Total area: approx. 78.9 sq. metres (849.3 sq. feet)



Williams Estates is the trading name of Williams Estates (Ltd). Registered address 33, The Green, Hartford, Northwich, Cheshire, CW8 1QA.

Reg number 07682683. Director Andrew P Williams