

Arbor House, Moulding Lane, London, SE14 6BS

£1,550 PCM

Pay less upfront with a Zero Deposit Guarantee and *ZERO AGENCY FEES* AVAILABLE NOW. Stunning one bedroom brand new apartment available to rent in The Foundry, Deptford. Perfectly positioned a short walk to the New Cross, Deptford and Deptford Bridge DLR. The apartment comprises of a large open plan reception/kitchen with balcony spanning the length of the reception area and overlooking the communal gardens. The property further benefits from communal gardens, concierge and ample storage space. This property is offered both as furnished and unfurnished. Call 1st Avenue now to organise your viewing!

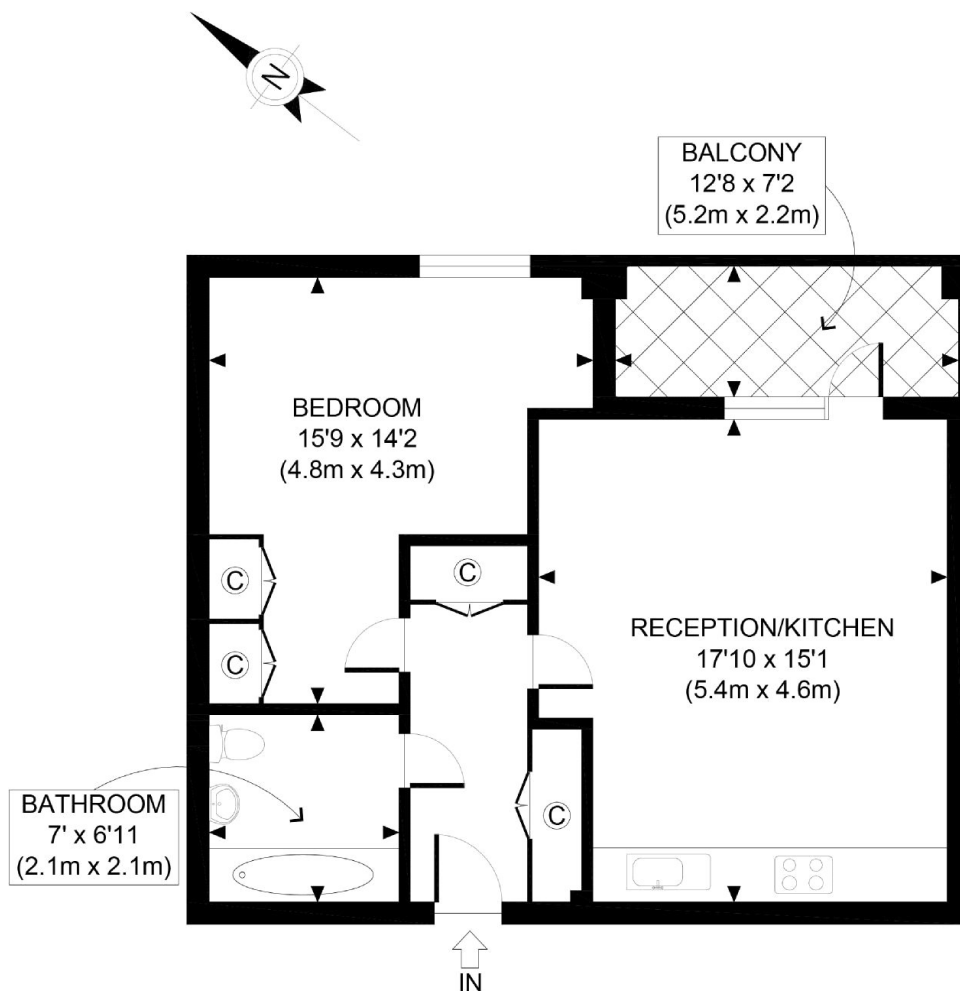
Viewing by appointment with 1st avenue.

Call: 020 8293 8600

1st avenue, 128 Metcalfe Court, West Parkside, London SE10 0EL
email: info@1stavenue.co.uk

Arbor House, Moulding Lane, £1,550 PCM London, SE14 6BS

1stavenue
Real Estate Services



THIRD FLOOR
GROSS INTERNAL
FLOOR AREA 560 SQ FT

APPROX. GROSS INTERNAL FLOOR AREA 560 SQ FT / 52 SQM

Ref:

Copyright **photoplan** 

Disclaimer: Floor plan measurements are approximate and are for illustrative purposes only. While we do not doubt the floor plan accuracy and completeness, you or your advisors should conduct a careful, independent investigation of the property in respect of monetary valuation

Viewing by appointment with 1st avenue.

Call: 020 8293 8600

1st avenue, 128 Metcalfe Court, West Parkside, London SE10 0EL
email: info@1stavenue.co.uk

1stavenue
Real Estate Services