



Park View Terrace



Park View Terrace

Worcester

£625,000

Positioned within a sought after location backing onto the River Severn is this four bedroom detached family home. The property comprises entrance porch, hall, living room, dining room, kitchen, study, conservatory, sun room, garage and workshop. To the first floor are four bedrooms with two ensuite bathrooms and a further family bathroom. Outside benefits from a driveway to the front and a large rear garden backing onto the River Severn and a outdoor pool in need of refurbishment. The property must be viewed to appreciate the potential of the accommodation on offer and rear garden. The house is offered for sale with no onward chain.

We've Noticed

- **Detached home**
- **Four bedrooms**
- **Sought after area**
- **No onward chain**
- **Driveway, garage and a large rear garden**



Entrance

Through front entrance door into porch with door into entrance hall. Hallway with doors into kitchen, dining room, WC, study.

9 Park View Terrace

Step into the embrace of this charming residence through the porch that leads you into the hallway with doors into WC, kitchen, dining room and study.

Kitchen with matching wall and base units with work surfaces over, stainless steel sink and drainer with mixer tap over, space for appliances, rear aspect window and door to the rear garden.

Dining Room with front aspect window, radiator, gas fireplace and door into living room.

Living Room with side aspect window, sliding patio doors, radiator and serving hatch.

WC with front aspect window, wash hand basin and WC.

Study with window and door into conservatory.

Conservatory with side and rear aspect windows and door into sun room and garage.

Garage with up and over door, window into conservatory and door into good size usable workshop space.

First Floor Landing - with doors into bedrooms and bathroom.

Bedroom 1 with front and rear aspect window, built-in storage and door into ensuite

Ensuite with rear aspect window, shower, wash hand basin and WC.

Bedroom 2 with rear aspect double glazed window, built-in storage and door into ensuite.

Ensuite with shower, WC and wash hand basin.

Bedroom 3 with front aspect window and built-in storage.

Bedroom 4 with side aspect window.

Bathroom with rear aspect window, WC, wash hand basin and shower.

Outside there is an expansive garden with direct access to the River Severn, featuring a swimming pool which does require refurbishment. The garden comprises a mixture of patio, lawn, trees and shrub creating a secluded retreat within the city. To the front is a driveway providing parking leading to garage and entrance of property.



Park View Terrace, WR3

Approximate Area = 1997 sq ft / 185.5 sq m

Limited Use Area(s) = 11 sq ft / 1 sq m

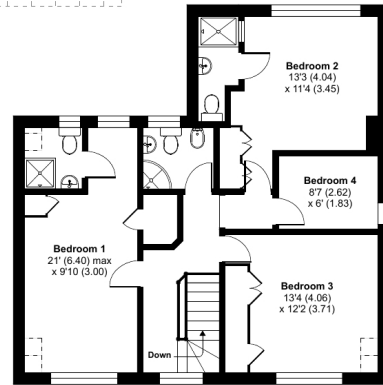
Garage = 154 sq ft / 14.3 sq m

Total = 2162 sq ft / 200.8 sq m

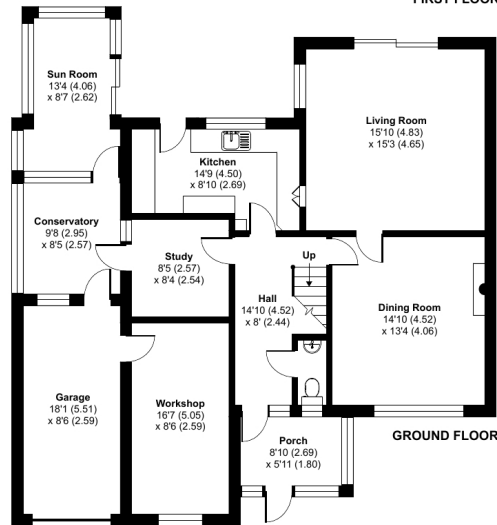
For identification only - Not to scale



Denotes restricted
head height



FIRST FLOOR



GROUND FLOOR



Floor plan produced in accordance with RICS Property Measurement Standards incorporating International Property Measurement Standards (IPMS2 Residential). © nchecom 2024. Produced for Hills Estate Agents. REF: 1141181

46 Foregate Street, Worcester WR1 1EE

Tel: 01905 723545 info@hillsestateagents.co.uk

www.hillsestateagents.co.uk

These particulars, whilst believed to be accurate are set out as a general outline only for guidance and do not constitute any part of an offer or contract. Intending purchasers should not rely on them as statements or representation of fact, but must satisfy themselves by inspection or otherwise as to their accuracy. We have not carried out a detailed survey nor tested the services, appliances and specific fittings. Room sizes should not be relied upon for carpets and furnishings. The measurements given are approximate. No person in this firm's employment has the authority to make or give any representation or warranty in respect of the property.

