

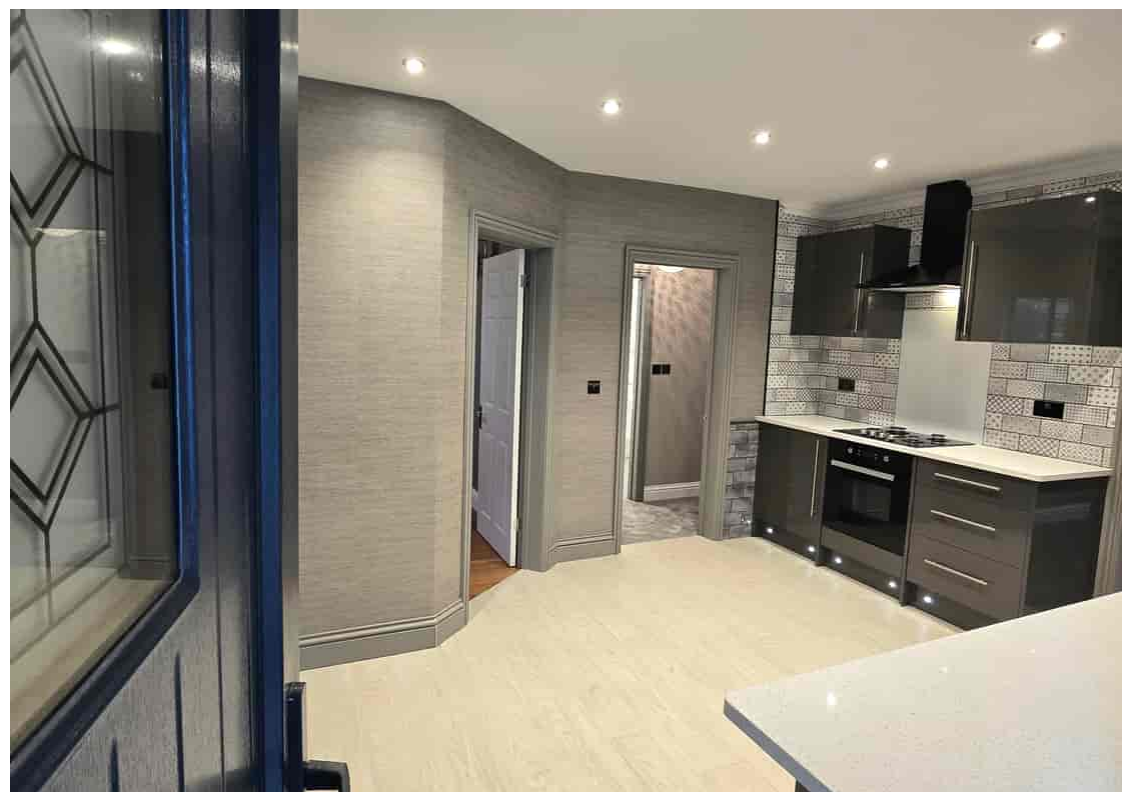


Flat 1, 33 Cantelupe Road, Bexhill-on-Sea, East Sussex, TN40 1NA

Immaculate Three Bedroom Newly Refurbished Maisonette : Sold With No Chain £299,950

- Leasehold Share of Freehold





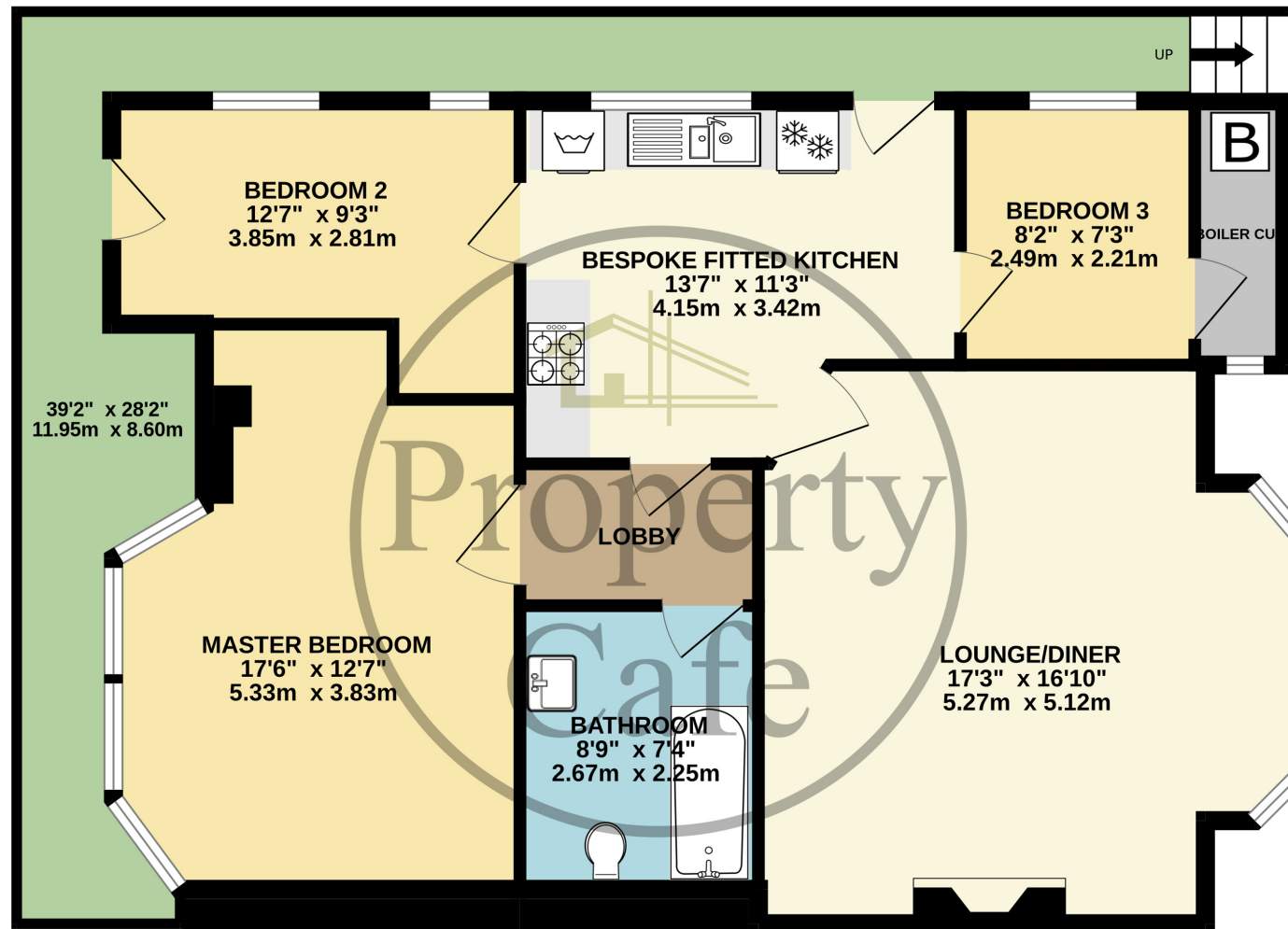


An Immaculate Three Bedroom Ground Floor Maisonette \* Fully Refurbished Throughout \* Spacious South Facing Lounge-Diner \* Three Immaculately Presented Bedrooms \* Modern Bespoke Fully Fitted Kitchen with built in appliances \* Starlight Granite Work Surfaces & Under Plinth Lighting \* Double Glazed & New Central Heating System \* Stunning Fully Tiled Bathroom Suite \* Quality Carpets & Flooring Throughout \* Own Private Entrance Door \* Side Path Extending To The Rear \* A Beautifully Presented Apartment Situated Close To The Seafront \* Walking Distance From Bexhill Town Centre & Station \* Offered For Sale With A Share Of The Freehold & Long Lease \* No Chain! : For Additional Details Or To Arrange To View Please Contact Our Bexhill Team On 01424 224488





# GROUND FLOOR 858 sq.ft. (79.7 sq.m.) approx.



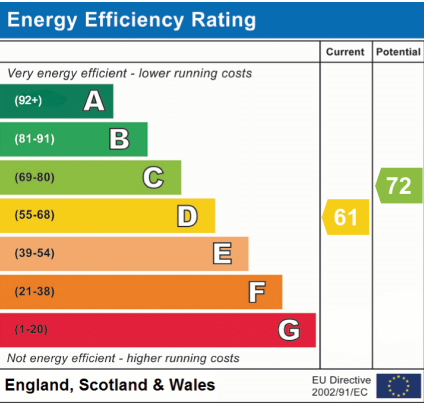
TOTAL FLOOR AREA : 858 sq.ft. (79.7 sq.m.) approx.

Whilst every attempt has been made to ensure the accuracy of the floorplan contained here, measurements of doors, windows, rooms and any other items are approximate and no responsibility is taken for any error, omission or mis-statement. This plan is for illustrative purposes only and should be used as such by any prospective purchaser. The services, systems and appliances shown have not been tested and no guarantee as to their operability or efficiency can be given.

Made with Metropix ©2025



**Bedrooms:** 3  
**Receptions:** 1  
**Council Tax:** Band A  
**Council Tax:** Rate 2457.1  
**Parking Types:** Permit.  
**Heating Sources:** Central.  
**Electricity Supply:** Mains Supply.  
**EPC Rating:** D (61)  
**Water Supply:** Mains Supply.  
**Sewerage:** Mains Supply.  
**Broadband Connection Types:** FTTC.  
**Accessibility Types:** Not suitable for wheelchair users.



An Immaculate Three Bedroom Ground Floor Maisonette \* Fully Refurbished Throughout \* Spacious South Facing Lounge-Diner \*  
Three Immaculately Presented Bedrooms \* Modern Bespoke Fully Fitted Kitchen \* Double Glazed & Central Heated \* Stunning  
Fully Tiled Bathroom Suite \* Quality Carpets & Flooring Throughout \* Own Private Entrance Door \* Side Path Extending To The  
Rear \* A Beautifully Presented Apartment Situated Close To The Seafront \* Walking Distance From Bexhill Town Centre & Station \*  
Offered For Sale With A Share Of The Freehold & Long Lease \* No Chain!







The property is situated within the quiet outskirts of Bexhill Town and offers an excellent range of independent shops and amenities serving the local residents. Within the Town Centre you will find all the shops general facilities that you may need on a daily basis, most are independently owned and have been in existence for many years but of course there are also some excellent main shopping facilities. You will find an excellent Doctors surgery, various dentist, excellent local pubs and restaurants, a main pharmacy & main post office. The new link road is also nearby allowing easy access to The Conquest Hospital & the A21. There are regular bus services available close by with services to the Town centre, Eastbourne. Hastings and both Collington & Bexhill Mainline stations provide excellent direct train services to Gatwick, Ashford International & of course Central London.

- An Immaculate Three Bedroom Maisonette
    - Fully Refurbished Throughout
    - Spacious South Facing Lounge-Diner
  - Three Immaculately Presented Bedrooms
    - Modern Bespoke Fully Fitted Kitchen
    - Double Glazed & Central Heated
    - Stunning Fully Tiled Bathroom Suite
  - Quality Carpets & Flooring Throughout
- Own Private Entrance Door
  - Side Path Extending To The Rear
  - A Beautifully Presented Apartment
    - Close To The Station & Seafront
  - Walking Distance From Bexhill Town centre
    - Share Freehold & Long Lease
    - Offered For Sale With No Chain!