



9 Whittle Court,
Knowlhill, Milton Keynes, MK5 8FT

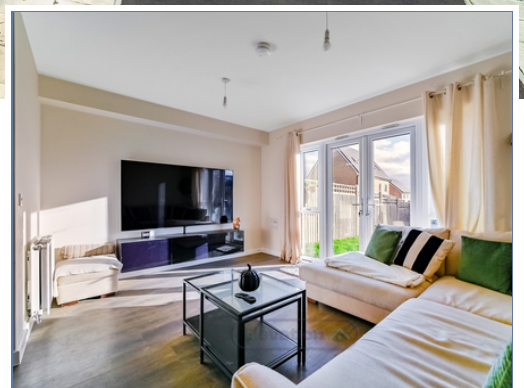
Tel: 01908 231 551
mail@elevationstateagents.com



**42 Blyton Lane, Tattenhoe Park, Milton
Keynes, Buckinghamshire, MK4 4LG**

£335,000 Freehold

- Sought-after Location
- Great School Catchment
- Open plan living/dining area
- Can rent out for £1,350 pcm
- Two double bedrooms
- Driveway for two cars
- 872 square feet
- EPC Rating



See our full selection of properties online at www.elevationstateagents.com



This is a lovely 2-bedroom home comprising an open-plan living and dining area, fitted with stylish French doors that lead to the extremely large rear garden, alongside a front-facing kitchen. Upstairs, a modern family bathroom provides for the bedrooms.

Tattenhoe Park is an innovative development of new homes, built using modern methods of construction to create an exclusive, semi-rural new community in Milton Keynes. Just a 10-minute drive from the vibrant town centre, Tattenhoe Park enjoys easy access to fantastic shopping, dining and entertainment options, along with highly-regarded local schools – including an on-site primary school – and excellent transport connections by both road and rail.

Kitchen and Dining area

5.68m x 2.93m (18' 8" x 9' 7")

Living area

4.53m x 3.22m (14' 10" x 10' 7")

Bedroom one

4.53m x 3.23m (14' 10" x 10' 7")

Bedroom two

4.53m x 2.74m (14' 10" x 9' 0")

Disclaimer

Whilst we have endeavoured to prepare our sales particulars accurately none of the services, appliances or equipment have been tested. A buyer should satisfy themselves on such matters prior to purchase. Any measurements or distances mentioned in these particulars are for guide reference only. If such particulars are fundamental to a purchase, buyers should rely on their own enquiries. All enquiries should be directed to Elevation Estate Agents in the first instance.

