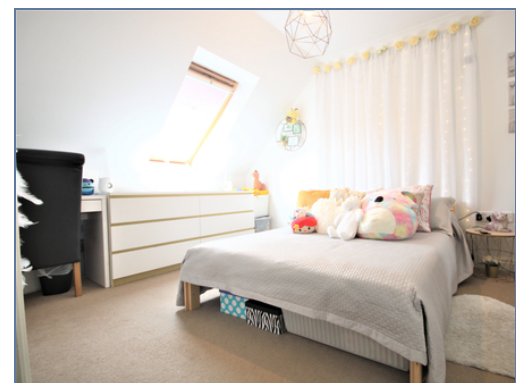




29 Arnos Grove, Monkston Park, Milton Keynes, Buckinghamshire, MK10 9PP

£155,000 Leasehold

- Three double bedrooms
- Desirable location of Monkston
- 50% Shared ownership
- £283 a month for rent
- BPHA housing association
- £3,000 FIXTURE AND FITTINGS
- 84 years remaining on the lease
- EPC Rating





Kitchen/Diner

3.91m x 3.81m (12' 10" x 12' 6")

Living Room

4.67m x 2.84m (15' 4" x 9' 4")

Bedroom Three

2.29m x 2.74m (7' 6" x 9' 0")

Bedroom Two

4.1m x 2.87m (13' 5" x 9' 5")

Bedroom One

3.74m x 2.67m (12' 3" x 8' 9")

Disclaimer

Whilst we have endeavoured to prepare our sales particulars accurately none of the services, appliances or equipment have been tested. A buyer should satisfy themselves on such matters prior to purchase. Any measurements or distances mentioned in these particulars are for guide reference only. If such particulars are fundamental to a purchase, buyers should rely on their own enquiries. All enquiries should be directed to Elevation Estate Agents in the first instance.

