

Bath Office
35 Brock Street, Bath BA1 2LN
T: +44 (0)1225 33332
E: bath@cobbfarr.com

Bradford on Avon Office
37 Market Street, Bradford on Avon BA15 1LJ
T: +44 (0)1225 866111
E: bradfordonavon@cobbfarr.com

cobbfarr.com

**COBB
FARR**

Residential Sales

Residential Lettings

Land & Development

**COBB
FARR**

Residential Lettings



7 The Elms Weston Park West,
Bath, Bath, England, BA1 4AR

£2,500 pcm

A spacious and beautifully presented two bedroom garden apartment with two allocated parking spaces set within a leafy area of Bath and within a 20 minute walk of the centre

Available now

Unfurnished

Key Features

- Beautifully presented
- Gardens
- Close to Royal United Hospital
- NO STUDENTS
- Spacious and light accommodation
- Two allocated parking spaces
- Walking distance city centre
- NO PETS

Description

The Elms is situated in a very quiet, leafy area yet is within easy reach of local shops, RUH and the city centre. The accommodation is beautifully presented with newly laid carpets, new decorations throughout, ample storage, separate dining room opening onto gardens, two large double bedrooms and two bathrooms. There are two allocated parking spaces together with visitor parking.

Accommodation

Kitchen

with contemporary floor and wall mounted units, integrated appliances to include double oven, microwave, gas hob, dishwasher, washing machine and large fridge freezer. Granite worktops, breakfast bar and larder cupboard.

Dining room

with double doors leading through to sitting room and French doors leading out to garden.

Sitting room

with built fireplace with cupboards and shelving either side and views over the garden.

Bathroom

with traditional suite comprising bath with hand held shower, wash hand basin with vanity mirror and shelf over and w.c.

Bedroom 1

with large fitted wardrobe

En suite

with contemporary fitted suite comprising shower cubicle, wash hand basin with vanity until under and mirror and shelf over and w.c.

Library area

with various fitted bookshelves and range of fitted wardrobes and storage cupboards

Bedroom 2

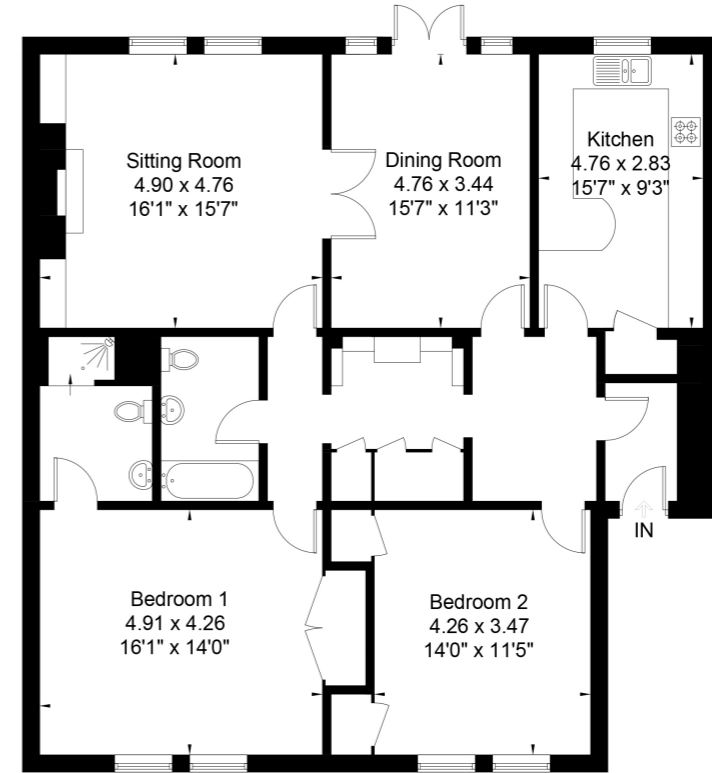
with wardrobe and shelved cupboard

Externally

is a paved private area immediately outside the French doors leading onto beautiful communal lawns with shrubs, trees and borders. There are also two allocated parking spaces and visitor parking

7 The Elms, Weston Park West, Bath BA1 4AR

Approximate Gross Internal Area = 129.8 sq m / 1397 sq ft



Ground Floor

These plans are prepared in accordance with the guidelines as set out by the RICS Code of Measuring Practice. Whilst every attempt has been made to ensure accuracy, all measurements should be treated as approximate and as such are for illustrative purposes only. Not to Scale. Photography | Drone | Video Tours | Floor Plans | Energy Performance Certificates | Design | Print | www.roomcpm.com | © Room - Creative Property Marketing Ltd 2024.



General Information

Council Tax Band F

Energy Performance Rating C

Important Notice: Cobb Farr, their clients and any joint agents give notice that: They assume no responsibility for any statement that may be made in these particulars. These particulars do not form part of any offer or contract and must not be relied upon as statements or representations of fact. Any areas, measurements or distances are approximate. The text, photographs and plans are for guidance only and are not necessarily comprehensive. It should not be assumed that the property has all necessary planning; building regulation or other consents and Cobb Farr have not tested any services, equipment or facilities. Purchasers must satisfy themselves by inspection or otherwise.