



Hillary Court,  
Freshfield Road,

£158,000

SM

STEPHANIE MACNAB  
ESTATE AGENT



Welcome to Hillary Court, a highly regarded development by McCarthy & Stone conveniently situated within walking distance to the Village and Train Station.

This RARE TWO-BEDROOM APARTMENT, positioned on the second floor and FRONT-FACING within the development, is an exceptional opportunity. With the same owner since its construction in 2004, the property offers both comfort and practicality in a highly desirable location.

Upon entering, you are welcomed into the ENTRANCE HALL, which features ample storage cupboards and an intercom entry system for convenience and security. The SPACIOUS LOUNGE/DINER is bathed in natural light, offering picturesque views along Freshfield Road and Duke Street—perfect for enjoying the scenery or simply watching the world go by. The KITCHEN, accessed directly from the lounge, is a practical space that also benefits from natural light through a well-placed window.

Both BEDROOMS are GENEROUSLY SIZED DOUBLES, with the main bedroom boasting built-in storage behind stylish folding mirror doors. Completing the property is a practical SHOWER ROOM, designed with ease of use in mind.

There are additional details, which include the following:-

Lift

Laundry Room

Communal Lounge with kitchen for various social activities

Guest Suite available for visitors

24-hour telephone care line system recently upgraded

On-site Development Manager

Landscaped Gardens

Car Parking

Bicycle Shed & Scooter Storage

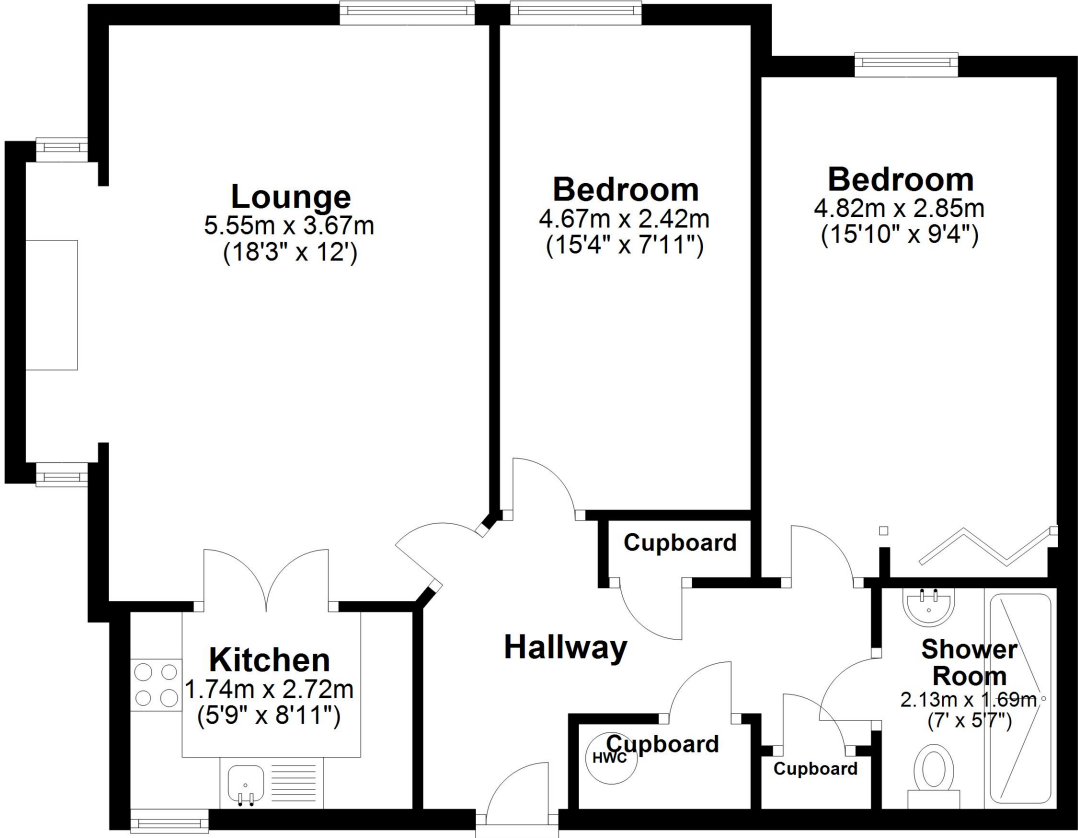
There is NO ONWARD CHAIN. Call to view 01704 516 626





Second Floor

Approx. 69.0 sq. metres (742.6 sq. feet)



Total area: approx. 69.0 sq. metres (742.6 sq. feet)

Plan produced using PlanUp.

Energy Efficiency Rating		
	Current	Potential
Very energy efficient - lower running costs		
(92+) <b>A</b>		
(81-91) <b>B</b>	83	86
(69-80) <b>C</b>		
(55-68) <b>D</b>		
(39-54) <b>E</b>		
(21-38) <b>F</b>		
(1-20) <b>G</b>		
Not energy efficient - higher running costs		
England, Scotland & Wales		
EU Directive 2002/91/EC		



