



Blake Street,  
Burslem



**OneAgency**

01782 970222

[hello@oneagencygroup.co.uk](mailto:hello@oneagencygroup.co.uk)



£550 pcm

A two bedroom mid terraced house in the popular location of Burslem. The property benefits from well presented accommodation with a kitchen/diner, ground floor bathroom and two good sized bedrooms. Close to amenities, commuter links such as A500 & M6 and local schools. Viewing is highly advised!





## Ground Floor

### Reception Room

3.51m x 3.12m (11' 6" x 10' 3") Entered through the front door, double glazed window, radiator and vinyl flooring.

### Kitchen/Diner

3.51m x 3.41m (11' 6" x 11' 2") A range of wall and base units with worktops, stainless steel sink basin, integral oven and gas hobs with hood over, plumbing for a washing machine, space for a fridge/freezer, double glazed window, radiator and vinyl flooring.

### Bathroom

2.41m x 1.77m (7' 11" x 5' 10") A white suite with bath and overhead shower, pedestal hand wash basin, low level W/C, double glazed window, radiator and vinyl flooring.

## First Floor

### Bedroom One

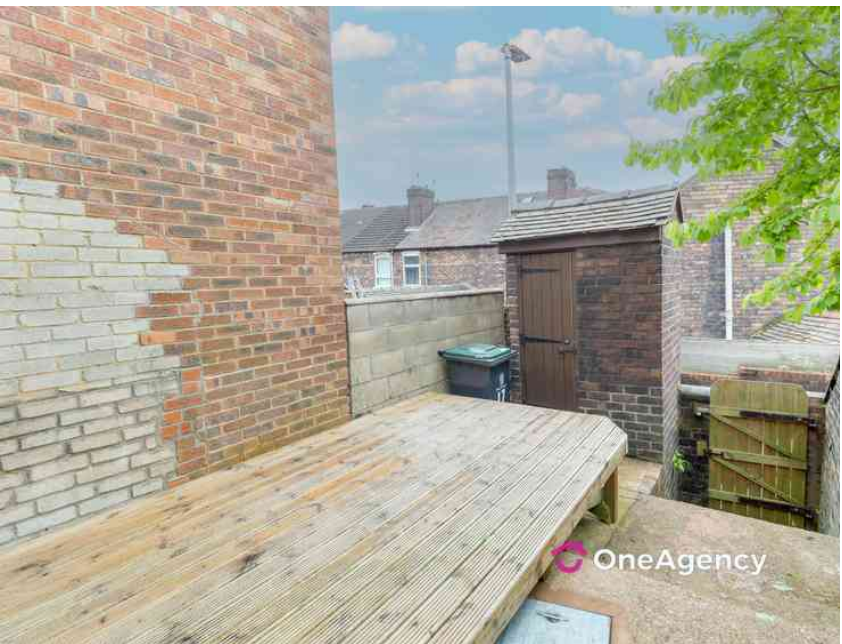
3.51m x 3.44m (11' 6" x 11' 3") A double glazed window to the rear, storage cupboard, radiator and carpet flooring.

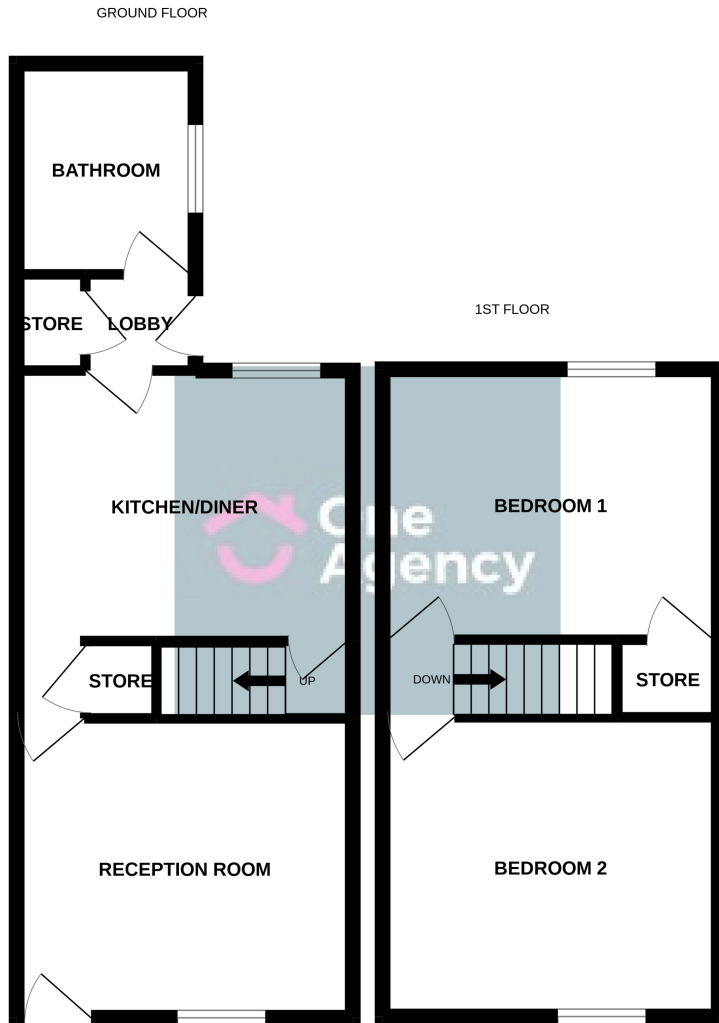
### Bedroom Two

3.51m x 3.14m (11' 6" x 10' 4") A double glazed window to the front, radiator and carpet flooring.

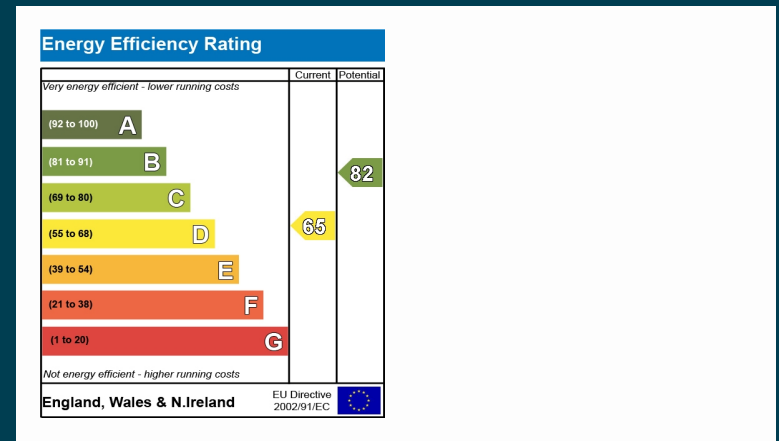
## External

A paved rear yard with decking area and gated access.





Whilst every attempt has been made to ensure the accuracy of the floorplan contained here, measurements of doors, windows, rooms and any other items are approximate and no responsibility is taken for any error, omission or mis-statement. This plan is for illustrative purposes only and should be used as such by any prospective purchaser. The services, systems and appliances shown have not been tested and no guarantee as to their operability or efficiency can be given.  
 Made with Metroplan ©2022



OneAgency, 9 & 10 Ridge House Drive, Festival Park, Stoke-on-Trent, ST1 5SJ

01782 970222

hello@oneagencygroup.co.uk

Every attempt has been made to ensure accuracy, however, all measurements are approximate and for illustrative purposes only. **Not to scale.**

In accordance with The Consumer Protection from Unfair Trading Regulations 2008 the following particulars have been prepared in good faith and they are not intended to constitute part of an offer or contract. We have not carried out a structural survey and the services, appliances and specific fittings have not been tested. All photographs, measurements, floor plans and distances referred to are given as a guide only and should not be relied upon for the purchase of carpets or any other fixtures and fittings. Lease details, service charges and ground rent (where applicable) are given as a guide only and should be checked and confirmed by your Solicitor prior to exchange of contracts.