



**Flat 9, 352 Townergate House, Avebury
Boulevard, Milton Keynes,
Buckinghamshire, MK9 2JH**

£200,000 Leasehold

- Luxury one bedroom apartment
- Parking
- Ground floor apartment
- Dressing room
- 124 Years remaining on the lease
- £80 a month for service charge and water
- Chain Free!
- • Concierge
- 10 min Walk to Milton Keynes Station (Euston 30 mins)





**** CAN RENT FOR £1,000 PCM****

We are delighted to offer for sale this modern large one bedroom ground floor apartment, situated in Central Milton Keynes (close to MK train station, Campbell Park and Milton Keynes shopping centre). The accommodation comprises; entrance hall, open plan lounge/dining area with a quality fitted kitchen with integrated appliances, a high spec fully tiled bathroom and a large bedroom with a dressing room.

Living room

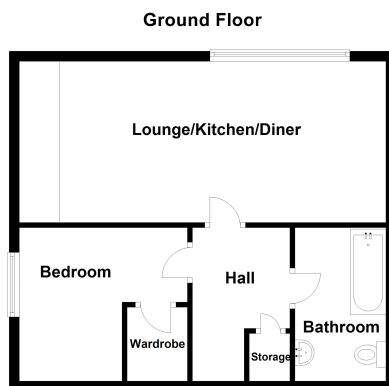
6.33m x 3.05m (20' 9" x 10' 0")

Bedroom one

2.38m x 4.26m (7' 10" x 14' 0")

Disclaimer

Whilst we have endeavoured to prepare our sales particulars accurately none of the services, appliances or equipment have been tested. A buyer should satisfy themselves on such matters prior to purchase. Any measurements or distances mentioned in these particulars are for guide reference only. If such particulars are fundamental to a purchase, buyers should rely on their own enquiries. All enquiries should be directed to Elevation Estate Agents in the first instance.



Floor plans are for layout purposes only. Measurements are approximate and subject to inaccuracies
Plan produced using PlanUp.