

2 Bedroom(s), Apartment, Leasehold

59 Buttermere Crescent, Lakeside, Doncaster,



- 3D Virtual Tour Available
- Open Plan Modern and Stylish Kitchen and Lounge
- Bathroom
- Allocated Car Parking Space and Ample Visitor Parking

- Second Floor Apartment in a Sought After Location
- Two Bedrooms
- Intercom System for Secure Entry
- Close By to Lakeside, Shops, Restaurants and The Racecourse

£138,000
For Sale

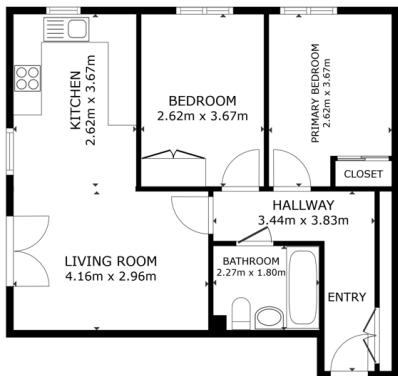
Book your viewing today Tel: 01302 247754

Owner's View

3D Virtual Tour Available- Take a closer, more detailed look around via our 3D Virtual Tour! Don't forget that you can also check availability for viewings online via a visit to our website... Lovely modern apartment with great views 2 minutes walk to lakeside & all amenities

Ground Floor

Floor Plan



GROSS INTERNAL AREA
FLOOR PLAN 95.5 sqm
TOTAL: 95.5 sqm

Matterport

Open Plan Kitchen and Lounge



Bedroom



Bedroom



Bathroom



External

Front Aspect



Rear Aspect



Property Information

Council Tax Band - C

Utilities - Mains Gas, Mains Electricity, Mains Water

Water Meter - Yes

Average Annual Electricity Bills -

Average Annual Gas Bills -

Average Annual Water Bills -

Tenure - Leasehold 2010 - 141 years left on lease

Solar Panels - No

Space Heating System - Gas Boiler with radiators (Combi)

Approximate Heating System Installation Date - 9/3/2016

Water Heating System - Gas combi boiler

Approximate Water Heating Installation Date - 9/3/2016

Boiler Location - Kitchen cupboard

Approximate Electrical System Installation Date - 2016

Approximate Electrical System Test Date -

Fires/Heaters - None

Permanent Loft Ladder - No

Loft Insulation - Yes

Loft Boarded out - No

Whilst every effort is made to ensure that the information contained in these particulars is reliable, they do not constitute or form part of an offer or any contract. The Property Hive accept no liability for the accuracy of the contents, and therefore they should be independently verified by prospective buyers or tenants before agreeing an offer. All measurements provided are approximate and should be verified before exchange of contracts. No appliances, fixtures or fittings have been tested and should be checked by the buyer before exchange of contracts to ensure they are in good working order.

Energy Performance Certificate

