

A bright, modern interior space featuring a living area with a grey sofa, a matching ottoman, and a modern armchair. The floor is made of light-colored wood. Large windows and a set of glass doors provide a view of the outdoors. In the foreground, a round glass dining table with a wooden base and four modern chairs is visible. The walls are white, and the ceiling has recessed lighting.

hastings
INTERNATIONAL

Sitka House

£675,000

Sitka House, London, 20 Quebec Way SE16 7EU

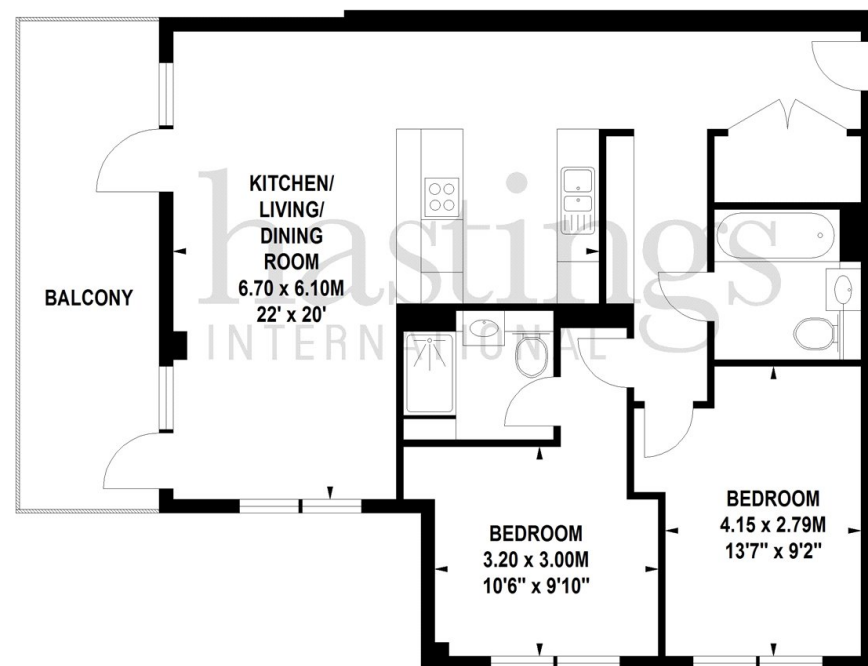
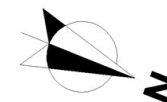
A stylish, second floor, dual aspect, two bedroom, two bathroom apartment with generous balcony and concierge facilities located within Quebec Quarter, a modern development located moments from Canada Water station [Jubilee Line & Overground], Surrey Quays shopping centre and Stave Hill Ecological Park.

This stylish second dual triple aspect apartment comprises entrance hall with storage and utility cupboards, impressive dual aspect reception room with dining area, floor to ceiling windows, doors to generous private balcony, stylish open plan fitted kitchen with stone work tops and integrated appliances, master bedroom with en-suite shower room, guest bedroom two and family bathroom. Residents of Sitka House have the benefit of access to landscaped communal gardens and concierge facilities. Secure allocated parking available under separate negotiation. Canada Water station [Jubilee & Overground] is moments away together with Surrey Quays shopping centre and Stave Hill Ecological Park. EWS1 Compliant.

- Quebec Quarter SE16
- Dual Aspect Apartment
- Two Bathrooms
- High Specification Interior
- Concierge Facilities
- 845 Sq Ft
- Two Double Bedrooms
- Generous Private Balcony
- Second Floor
- Excellent Location

Core C1-15 Quebec Quarter, SE16

Approximate gross internal area
78.5 sq m / 845 sq ft



Second Floor

Measurements taken from architect's plans

Illustration for identification purposes only, not to scale
All measurements are maximum, and includes wardrobes and window bays where applicable



