

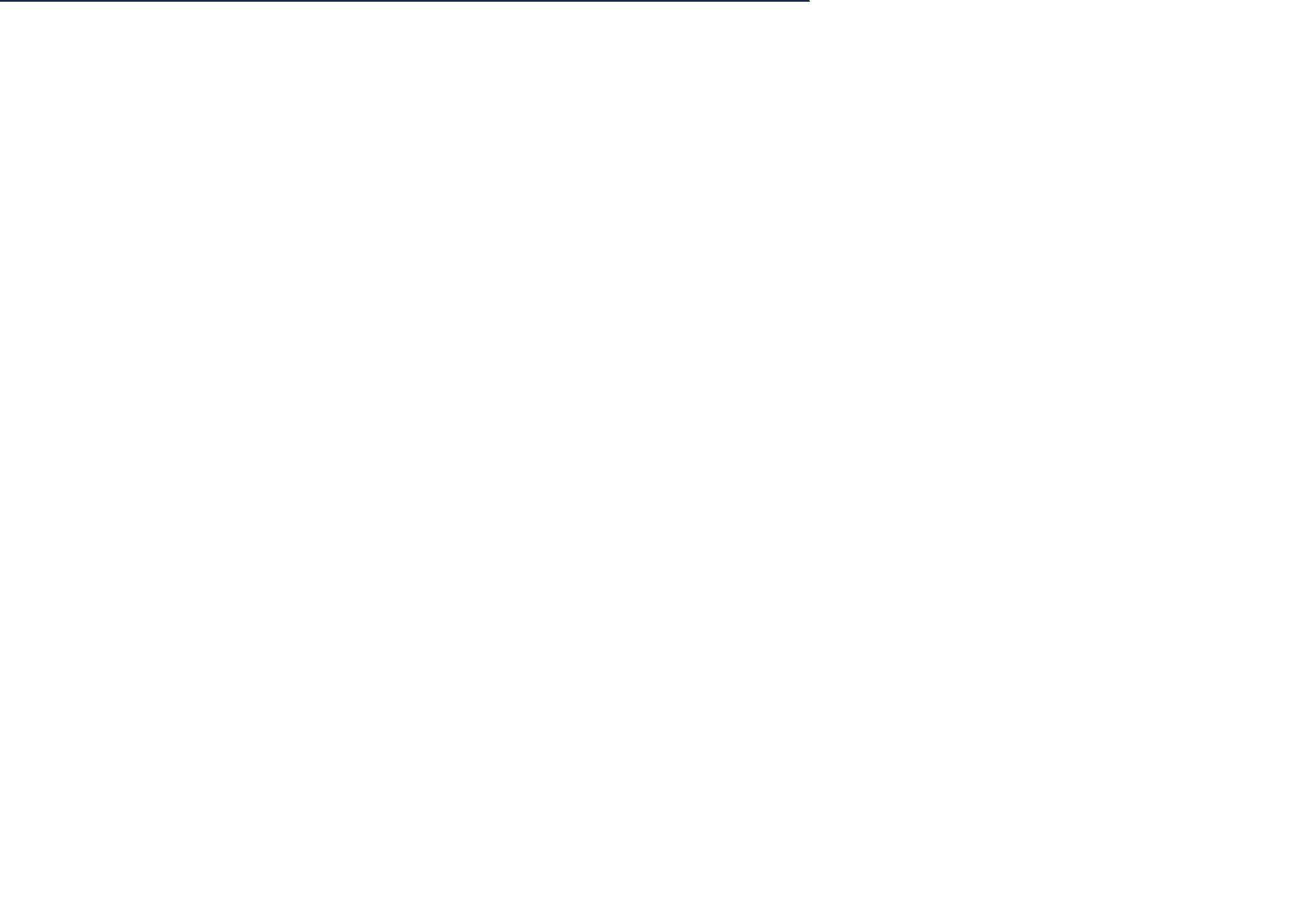


30 Brabazon Road
Hounslow, TW5 9LS



Telephone: 02085707900

Email: gavin@bluestateagents.co.uk





Brabazon Road

Hounslow, TW5 9LS

OUTSTANDING AND LUXURY LIVING. As sole agents Blue Estate Agents bring to the market this remarkable two bedroom semi-detached house located in the ever so popular area in Heston off Cranford Lane. The property boasts of a large reception room leading to a large extended extension which then leads out to the rear garden. Brand new fitted kitchen with ample amount of storage space and comes with built in appliances, downstairs also benefits from a good sized shower and WC suite. To the first floor you have two large double bedrooms with built in wardrobes which lead on to a brand new fitted family shower suite. The property has been fitted with a new combination boiler and all central heating system and radiators have been changed. The property has also had its external roof changed and the loft is fully boarded. Outside to the rear you have an easy to maintain rear garden and a outbuilding with all electric points being used as a utility room and a second kitchen. To the front you have a long driveway which allows up to four cars to be parked in. The property also benefits from side gated access allowing access from the front and the rear



Blue Estate Agents

Estate Agents



Porch

(not measured)

Reception Room

6.12m x 2.82m (20' 1" x 9' 3")

Kitchen

2.24m x 3.99m (7' 4" x 13' 1")

Family/Breakfast Room

4.65m x 3.61m (15' 3" x 11' 10")

Ground Floor Shower Room

(not measured)

Bedroom One

4.27m x 2.95m (14' 0" x 9' 8")

Bedroom Two

3.51m x 3.20m (11' 6" x 10' 6")

Shower Room

(not measured)

Utility

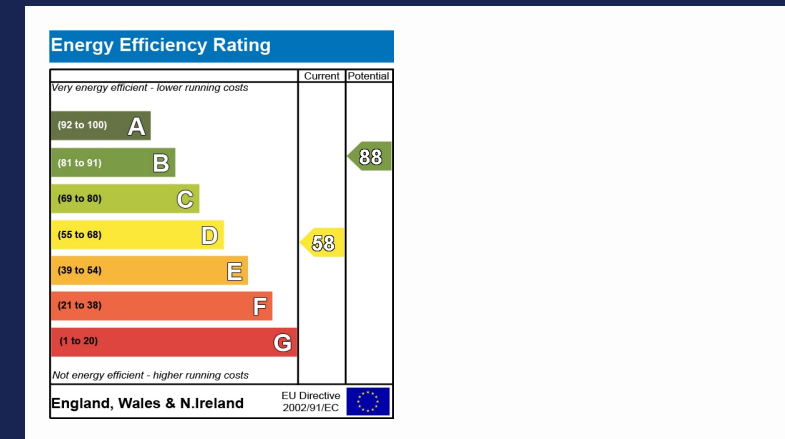
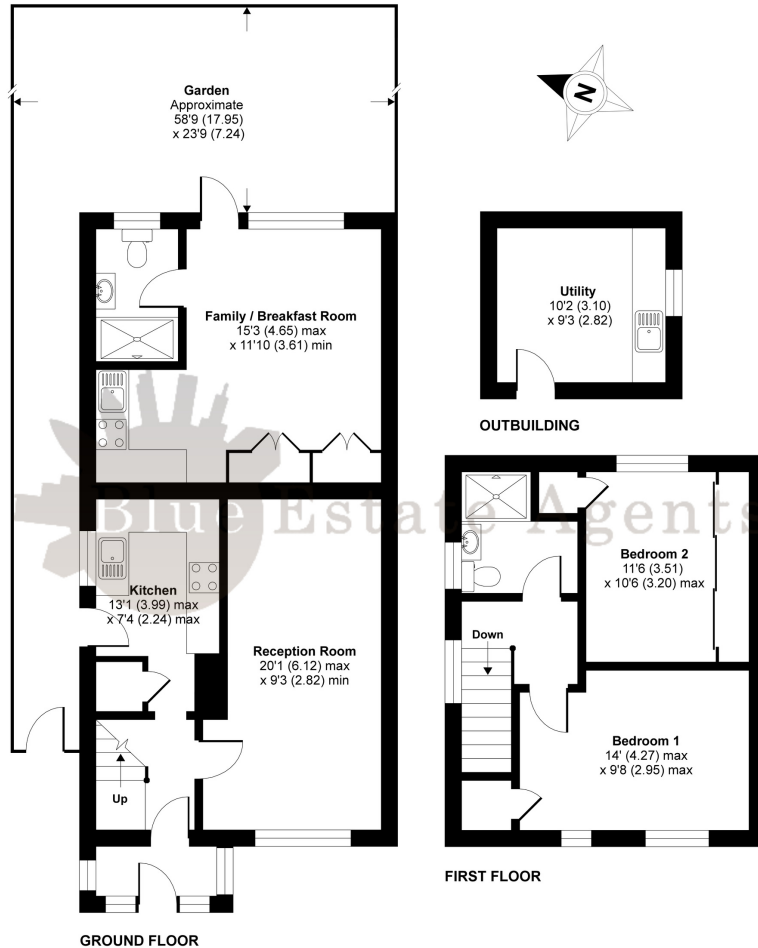
3.10m x 2.82m (10' 2" x 9' 3")



Brabazon Road, Heston, Hounslow, TW5

Approximate Area = 1034 sq ft / 96.1 sq m
 Outbuilding = 94 sq ft / 8.7 sq m
 Total = 1128 sq ft / 104.8 sq m

For identification only - Not to scale



Floor plan produced in accordance with RICS Property Measurement Standards incorporating International Property Measurement Standards (IPMS2 Residential). © nrichcom 2021. Produced for Blue Estate Agents. REF: 791390

Blue Estate Agents
 315 Vicarage Farm Road, Hounslow
 Greater London
 TW5 0DR

