

Royal Crescent, Weston-Super-Mare, Somerset. BS23 2AX

£160,000 Leasehold

FOR SALE



www.housefox.co.uk



01934 314242
01275 404601
01278 557700
sales@housefox.co.uk

PROPERTY DESCRIPTION

HOUSE FOX ESTATE AGENTS PRESENTS.....Nestled within the esteemed Royal Crescent, just a stone's throw away from the picturesque seafront, this stunning first floor apartment offers a lifestyle of unparalleled luxury and convenience. Situated mere steps from the beach, vibrant cafes, renowned restaurants, lively bars, and the iconic Grand Pier, this residence presents an enviable opportunity to indulge in coastal living at its finest.

Impeccably refurbished to the highest standards, this apartment exudes sophistication and style at every turn. The interior space is thoughtfully designed to maximize comfort and functionality, ensuring a truly exceptional living experience.

Upon entry, you are greeted by a beautifully appointed lounge/kitchen area, where natural light floods through, creating a bright and inviting ambiance. The open-plan layout seamlessly integrates the modern kitchen with the elegant living space, ideal for both relaxation and entertaining.

The apartment features a generously sized double bedroom, providing a tranquil retreat for rest and relaxation. An en-suite shower room adds a touch of luxury, offering convenience and privacy for residents.

Modern electric heating ensures optimal comfort throughout the year, while a small separate office/storage area provides versatility and practicality to suit the needs of the modern lifestyle.

In summary, this first floor apartment in the prestigious Royal Crescent offers an unrivalled opportunity to embrace coastal living at its finest. With its prime location, impeccable refurbishment, and thoughtful design, this residence represents the epitome of luxury and convenience.

FEATURES

- WALK THROUGH 360 VIDEO TOUR AVAILABLE
- First floor apartment
- Double bedroom
- Refurbished throughout
- Modern kitchen with appliances
- Close to the sea front
- Modern electric heating
- Grade 2 listed building



ROOM DESCRIPTIONS

Feature front door to the communal hallway:

Communal hallway:

A stunning entrance hallway with feature staircase to the upper floors

Door to the apartment

Lounge/kitchen:

4.64m x 3.90m (15' 3" x 12' 10") LOUNGE AREA: Modern electric heater, window to the front...KITCHEN AREA: Sink unit, floor and wall units, built in oven and hob, integrated fridge/freezer

Bedroom:

4.49m x 2.39m (14' 9" x 7' 10") Window to the front, electric modern heater, door to en-suite

En-suite bathroom:

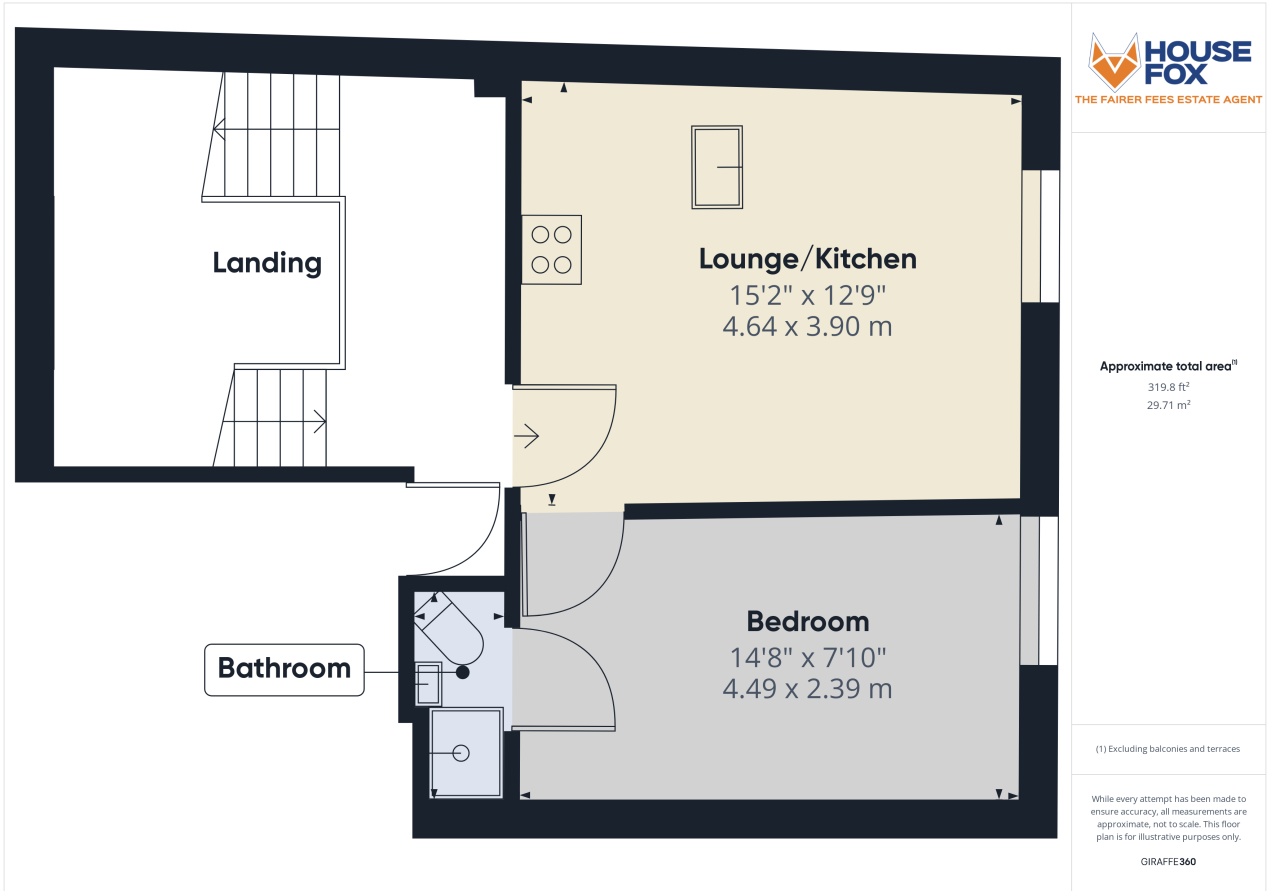
Shower cubicle, wash hand basin, low level WC, heated towel rail

Office/storage area:

This room is separate from the apartment, and set on the mezzanine level



FLOORPLAN & EPC



GIRAFFE360

