



PLATINUM RIVERSIDE 119, BESSEMER PLACE, NORTH GREENWICH, LONDON SE10 OGQ

£650,000

Perfectly situated two bedroom apartment is situated in the heart of the Greenwich Peninsula. This incredibly spacious apartment is positioned on the third floor boasting views direct onto the Thames and boasts a perfect specification. Briefly comprising stylish kitchen open plan to reception/dining room providing access to balcony. Two double bedrooms with master featuring en-suite shower room and further family bathroom. Further benefits include a residents gymnasium and roof terrace. This is the fusion of riverside living and in a superb location.

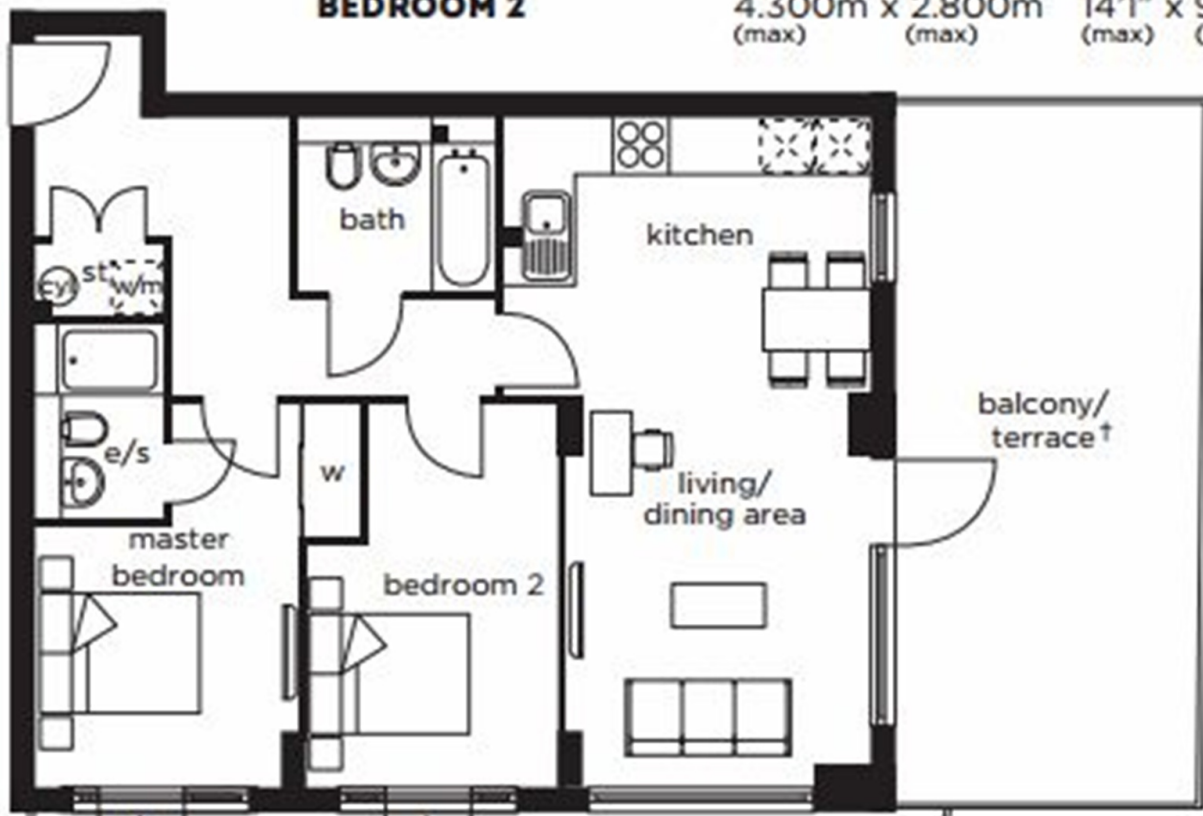
The development is located a short walk from North Greenwich tube station (Jubilee Line), the Emirates Cable Cars and the O2 with the many attractions within, including bars and restaurants. It is also within walking distance to Sainsburys, Aldi, Asda and Ikea. The development is also home to an excellent primary school, nursery and Eco park.

VIEWING BY APPOINTMENT WITH 1ST AVENUE. CALL: 020 8293 8600

**PLATINUM RIVERSIDE
119, BESSEMER PLACE,
NORTH GREENWICH,
LONDON SE10 0GQ**

£650,000

KITCHEN AREA	4.120m x 1.900m	13'6" x 6'3"
LIVING/DINING AREA	5.700m x 3.400m	18'8" x 11'2"
MASTER BEDROOM	4.300m x 2.950m (max)	14'1" x 9'8" (max)
BEDROOM 2	4.300m x 2.800m (max)	14'1" x 9'2" (max) (max)



**VIEWING BY APPOINTMENT
WITH 1ST AVENUE.**

CALL: 020 8293 8600

1stavenue
Real Estate Services