



15 Greeba Avenue, Warrington, Cheshire. WA4 6AP

•
£275,000

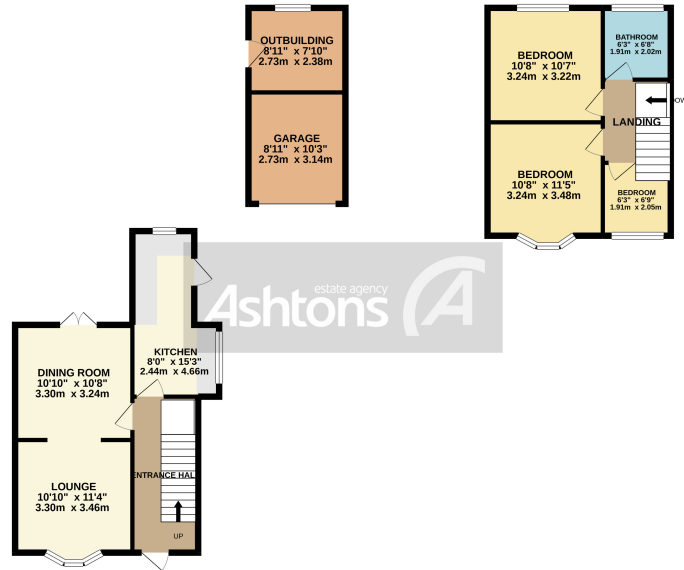


Work From Home Space | Bay Fronted Semi Detached House | Three Bedrooms | Two Reception Rooms | Full Double Glazed | potential to extend current footprint | newly fitted front door | South Facing Rear Garden |



GROUND FLOOR
583 sq.ft. (54.1 sq.m.) approx.

1ST FLOOR
359 sq.ft. (33.3 sq.m.) approx.



TOTAL FLOOR AREA - 942 sq ft. (87.5 sq.m.) approx.
 Whilst every attempt has been made to ensure the accuracy of the floorplan, measurements of areas, walling, windows and any other items are approximate and no responsibility is taken for any error, omission or misstatement. This plan is for illustrative purposes only and should be used as such by any prospective purchaser. The architect, surveyor and other professionals have not been named and no guarantee as to their capability or efficiency can be given.
 Made with MyHome 10.0.0.1

****SOUGHT AFTER AREA**** This well-presented semi-detached home offers a great opportunity to purchase a property in walk-in condition. The property offers a modern finish with two reception rooms, kitchen with a matching range of fitted units. On the first floor, there are three bedrooms and the main bathroom. Externally the property benefits from gardens to the front and rear, detached garage with a converted room to the rear. The property is fully double glazed and gas central heating.



Contact your local office to arrange a viewing:

- Padgate:** 01925 479334
- Great Sankey:** 01925 454300
- Winwick:** 01925 232146
- Stockton Heath:** 01925 453400
- St.Helens:** 01744 754120
- Wigan:** 01942 498862
- Culcheth:** 01925 764744
- Ashton-In-Makerfield:** 01942 364446
- Newton-Le-Willows:** 01925 907770
- Commercial Office:** 01925 907709
- Lettings Head Office:** 01925 873533
- Financial Services:** 01925 221234

Viewing Arrangements
 Viewing is strictly by appointment only through Ashtons Estate Agency.

Disclaimer Property Details
 These particulars, whilst being believed to be accurate are set out as a general outline only for guidance and do not constitute any part of an offer or contract. Intending purchasers should not rely on them as statements of representation of fact, but must satisfy themselves by inspection or otherwise as to their accuracy. We have not carried out a detailed survey nor tested the services, appliances and specific furnishings. The measurements given are approximate. No person in this firm's employment has the authority to make or give any representation or warranty in respect of the property.

All details, photographs and floorplans are the copyright of Ashtons Estate Agency.



How much you can borrow?
 Speak to a mortgage expert in your local office.

Ashtons Financial Services

Ashtons.net rightmove

PrimeLocation.com Zoopla.co.uk

