



Cherry Grove

Route de Farras | Forest | GY8 0EA

This detached family home boasts an abundance of character and charm with many beautiful features throughout, most notably the original parquet flooring in most of the rooms. Cherry Grove is conveniently located with shops and restaurants nearby while having the benefit of country walks on your doorstep. Accommodation comprises a large lounge, kitchen/breakfast room, conservatory, four double bedrooms, a study/single bedroom, two bathrooms and a WC. To the rear of the property is a mature but low maintenance south-facing garden with mature borders and shrubs. The front garden is also picturesque and houses a small shed, ideal for storing bikes. The gravel driveway provides parking for at least four vehicles, but this could be increased if needed.

£795,000

5 BEDROOMS

2 BATHROOMS

2 RECEPTIONS

Shields
& Rutland

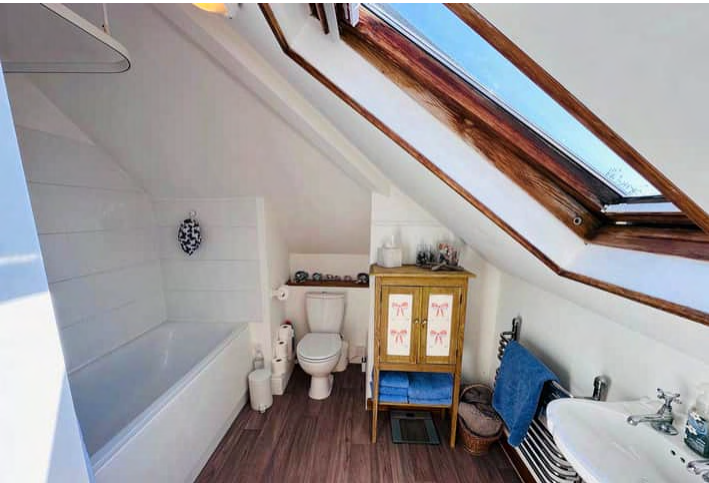
PHOTOS



PHOTOS



PHOTOS



SPECIFICATIONS



Entrance Hall

5.74m x 2.09m (18' 10" x 6' 10")

Lounge

6.57m x 4.88m (21' 7" x 16' 0")

Bedroom 2

3.95m x 3.67m (13' 0" x 12' 0")

Bedroom 3

3.67m x 3.41m (12' 0" x 11' 2")

Study/Bedroom 5

3.66m x 1.95m (12' 0" x 6' 5")

WC

1.64m x 0.92m (5' 5" x 3' 0")

Bathroom

2.41m x 2.09m (7' 11" x 6' 10")

Kitchen/Diner

4.89m x 3.42m (16' 1" x 11' 3")

Conservatory

5.17m x 3.40m (17' 0" x 11' 2")

First Floor Landing

1.91m x 0.93m (6' 3" x 3' 1")

Master Bedroom

6.00m x 4.75m (19' 8" x 15' 7")

Ensuite

2.97m x 2.55m (9' 9" x 8' 4")

Bedroom 4

3.32m x 3.28m (10' 11" x 10' 9")

Garden

To the rear of the property is a mature but low maintenance south-facing garden with mature borders and shrubs. The front garden is also picturesque and houses a small shed, ideal for storing bikes.

Parking

The gravel driveway provides parking for at least four vehicles, but this could be increased if needed.

PRICE INCLUDES

Curtain/blinds, flooring/carpets and light fittings

SPECIAL FEATURES

- Parquet flooring
- Cavity insulated
- South-facing garden
- Convenient location
- Full of character and charm
- trp-229

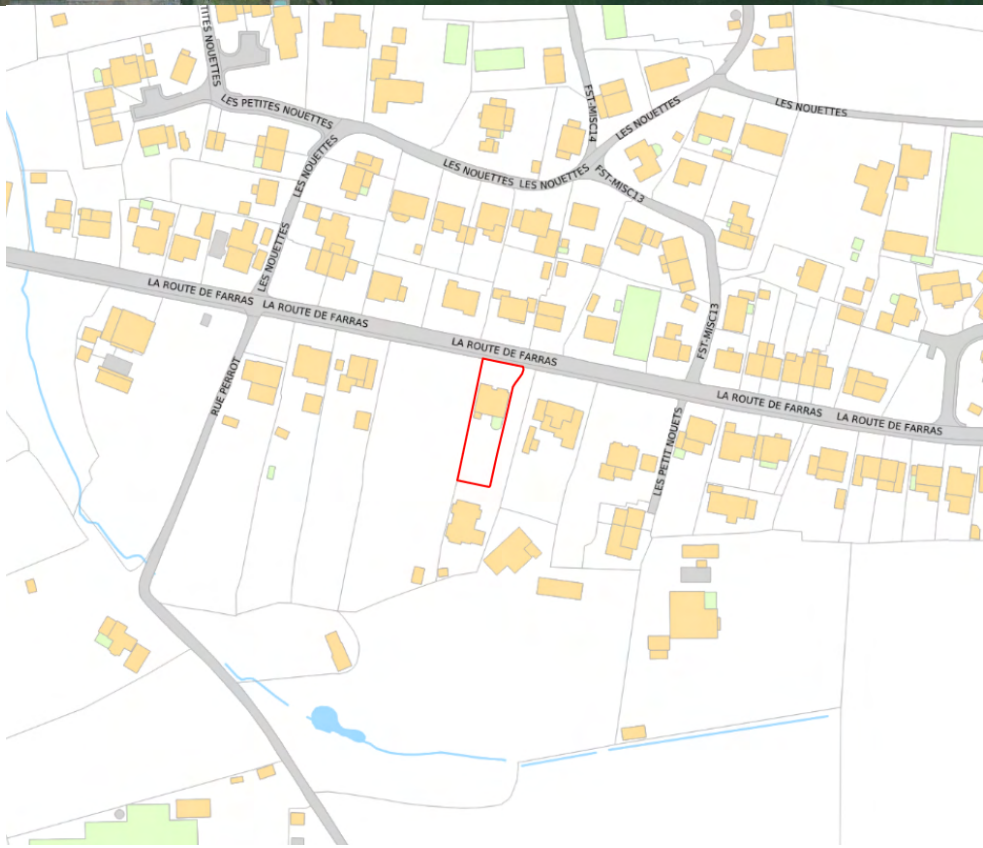
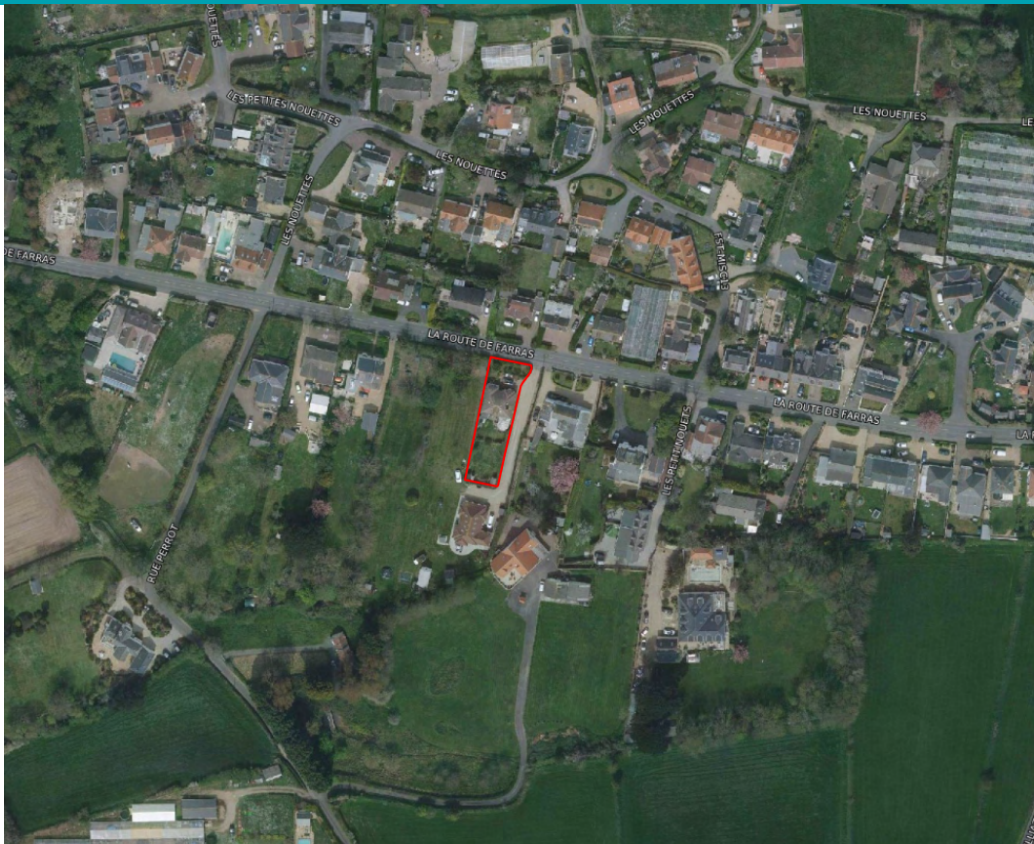
SERVICES

Mains water, electricity and drainage. Oil fired central heating.

APPLIANCES INCLUDED

- Hotpoint slimline dishwasher
- Hotpoint single oven
- Stoves Halogen four ring hob
- Hotpoint washing machine
- Statesman fridge
- Integrated freezer
- Igenix freezer

SCHOOL CATCHMENT



T 01481 714445
E info@shieldsandrutland.gg

Shields & Rutland, 31 Gategny Esplanade, St Peter Port,
Channel Island, GY1 1WR

shieldsandrutland.gg

Shields
& Rutland

OPENING DOORS SINCE 1993