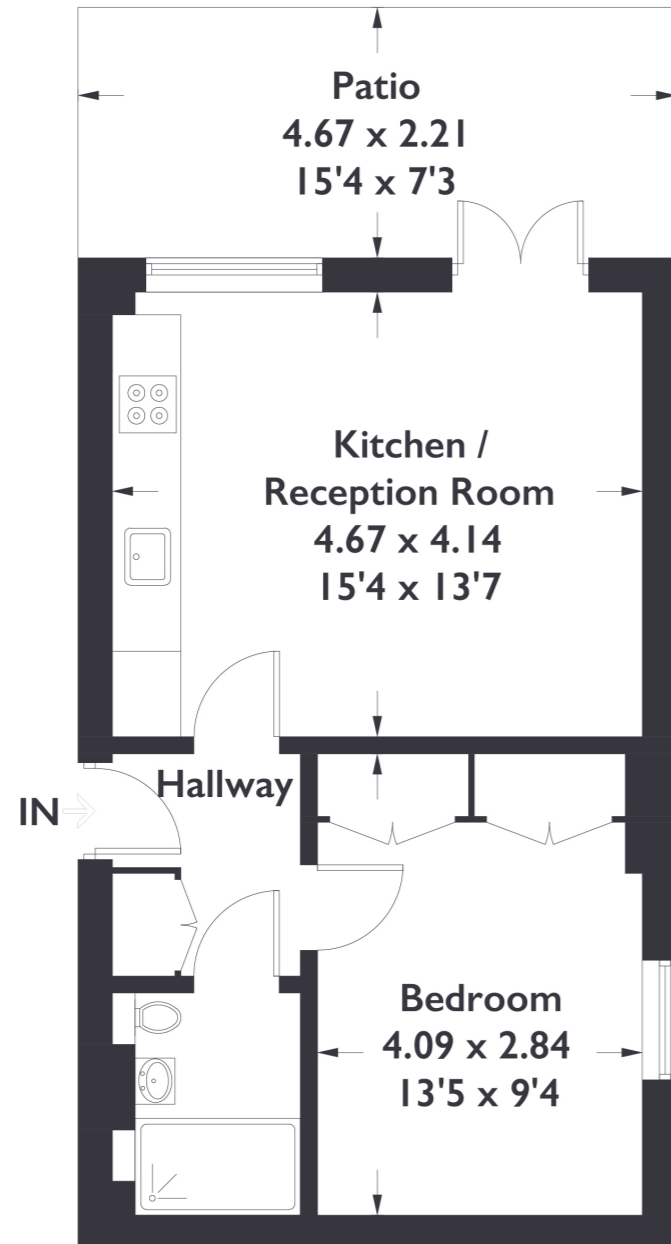


Carlyle Road, W5

Approximate Gross Internal Area = 39.2 sq m / 422 sq ft



Ground Floor

Measured in accordance with RICS Code of Measuring Practice. To be used for identification and guidance purposes only. Whilst every care is taken in the preparation of this plan, please check all dimensions, shapes and compass bearings before making any decisions reliant upon them. www.london58.com © 2023 hello@london58.com



1 BEDROOM FLAT

Carlyle Road, W5
£425,000

Welcome to our exquisite collection of meticulously designed apartments, where every detail has been carefully considered featuring clean, neutral interiors. Nestled in a prime location, these residences are a short distance from Northfields amenities and conveniently close to the Great West Road for seamless travel connections.

FEATURES

- Chain Free
- Leasehold
- One Bedroom
- One Bathroom
- Kitchen/Living Space
- Private Patio
- Northfields Station (Piccadilly Line)
- Boston Manor Station



1 BEDROOM FLAT
Carlyle Road, W5
£425,000

Step inside and experience the charm of pristine, open spaces. The generously proportioned wet room bathroom showcases exquisite finishes and a considerate layout.

In the fabulous double bedroom, you'll find ample built-in storage and an abundance of space to relax and unwind. Experience a stunning kitchen and living area meticulously crafted for style and practicality. Enhanced with premium Neff stove appliances and a seamlessly integrated built-in fridge, the kitchen emanates contemporary elegance.

Seamlessly transitioning, the living area beckons you through double doors to a delightful private patio, where abundant natural light infuses the space, ensuring moments of both indoor comfort and outdoor enjoyment.

