







**35a Ashford Crescent, Ashford, Surrey TW15 3EF**  
**£675,000 - Freehold**





## PROPERTY DESCRIPTION

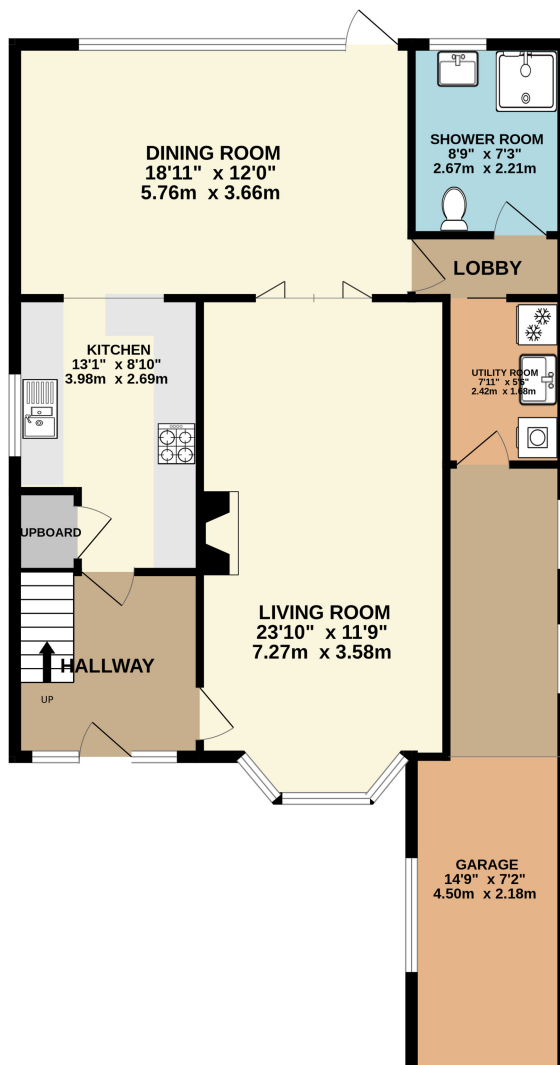
A great opportunity to acquire this three-bedroom detached family home situated on the sought-after Ashford Crescent, . This spacious property offers fantastic potential, with plenty of space to extend (subject to planning permission), making it ideal for buyers looking to add value or create their dream family home. The accommodation includes an entrance hallway, two spacious reception rooms, a good size kitchen, utility room, three good-sized bedrooms, a family bathroom and a downstairs shower room. Outside, the property benefits from a private driveway to off road parking and garage, There are gardens to the front and rear mainly lawned with a large patio area. Located in a quiet residential area yet within easy reach of local schools, shops, and transport links, the property is offered with no onward chain and early viewings are highly recommended.

## POINTS OF INTEREST

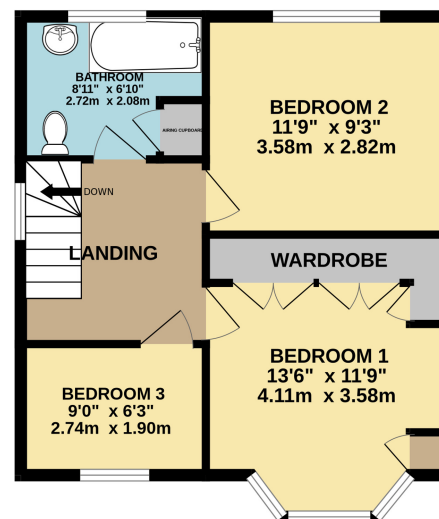
- Detached family home
- Three bedrooms
- Two large reception rooms
- Two bathrooms
- Own Drive to garage & parking
- Ample scope to extend STPP
- Popular location
- Extended accommodation



GROUND FLOOR  
1001 sq.ft. (93.0 sq.m.) approx.



1ST FLOOR  
462 sq.ft. (42.9 sq.m.) approx.



TOTAL FLOOR AREA : 1462 sq.ft. (135.9 sq.m.) approx.

Whilst every attempt has been made to ensure the accuracy of the floorplan contained here, measurements of doors, windows, rooms and any other items are approximate and no responsibility is taken for any error, omission or mis-statement. This plan is for illustrative purposes only and should be used as such by any prospective purchaser. The services, systems and appliances shown have not been tested and no guarantee as to their operability or efficiency can be given.  
Made with Metropix ©2025