

# WILKES STREET

LONDON E1 6QF



THE PROPERTY BROKERS

To Let

- 4 bedrooms 2 bathrooms
- 2,200 sqft approx. townhouse
- 380 sqft approx. outhouse
- Original features
- Small garden

Spanning approx. 2,200 sqft over 5 floors of pure Georgian Huguenot Townhouse, this charming home benefits from original features throughout including cast iron fireplaces, wood panelling and solid timber floors. Unlike the majority of houses in the area, this residence on Wilkes Street also has its very own 380 sqft studio space to the rear that could suit a variety of uses such as amateur photography studio, guest area or storage space.

The house offers extremely flexible accommodation with 3 or 4 bedrooms subject to configuration owing to changeable layouts on each floor from the lower ground up to the third. Living space is also generous on the ground floor complete with open plan, fully fitted kitchen which has plenty of storage space.



020 7993 6553

INFO@TBAPROPERTY.COM

WWW.TBAPROPERTY.COM

# WILKES STREET

LONDON E1 6QF

T B A  
THE PROPERTY BROKERS

Located just off Brick Lane in the centre of the Spitalfields conservation area, Wilkes Street is within a few minutes walk of the City, Spitalfields Market and Shoreditch. Each of these unique districts contain numerous award winning restaurants and bars including the Hawksmoor, Shoreditch House, Nobu and infamous Ten Bells pub.

Available end of March 2021 and offered unfurnished.



020 7993 6553

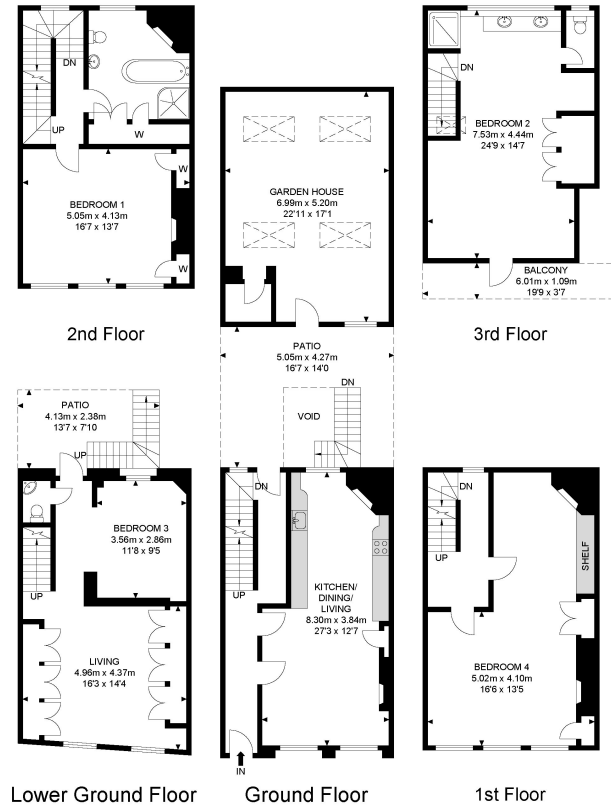
INFO@TBAPROPERTY.COM

WWW.TBAPROPERTY.COM

**WILKES STREET**  
LONDON E1 6QF



Wilkes Street



APPROX. GROSS INTERNAL FLOOR AREA 2549.97 SQ FT / 236.90 SQM  
 APPROX. GROSS EXTERNAL FLOOR AREA 382.11 SQ FT / 35.50 SQM

Whilst every attempt has been made to ensure the accuracy of the floor plan contained here, measurements of doors, windows, rooms and any other items are approximated and no responsibility is taken for any error, omission or mis-statement. This plan is for illustrative purposes only and should be used as such by any prospective purchaser. The service, system and appliances shown have not been tested and no guarantee as to their operability or efficiency can be given.

© SpacePhoto

Photography and Floor Plan



SALES  
LETTINGS  
OFF MARKET  
ACQUISITIONS  
DEVELOPMENT  
COMMERCIAL  
VALUATIONS

**TOBIAS ALLAN**

*Director*

07970 963 478

**JAMES DANTON**

*Director*

07930 858 612

**ADAM JONES**

*Director*

07769 275 027

