



5 Bedroom Detached Bungalow £900,000 – FREEHOLD  
40 Longmead | Letchworth Garden City

FINE & COUNTRY







# Step inside

## Longmead

Welcome to an exceptional detached bungalow that effortlessly combines sophisticated design with modern practicality. Thoughtfully extended and fully modernised to an impeccable standard, this elegant residence offers generous proportions, premium finishes, and outstanding versatility throughout.

Boasting five well-appointed bedrooms and three luxurious bathrooms, the home offers an abundance of space for both family living and elegant entertaining. Two expansive reception rooms provide a seamless flow for relaxation and social occasions, each filled with natural light and styled with understated elegance.

At the heart of the home is a beautifully crafted Howdens kitchen, where contemporary design meets functionality. Finished to a high specification, it features sleek cabinetry, quality appliances, and ample space for informal dining, perfect for hosting or enjoying everyday life in style. One of the home's standout features is the self-contained one-bedroom annex, ideal for extended family, guests, or private work from home quarters, offering independence without compromise on luxury.

The property extends into the first floor, maximising space while maintaining the convenience of single-level living, and every element has been curated with care to provide a turn-key experience for the discerning buyer.

This is a rare opportunity to acquire a home that offers both refined comfort and architectural charm, set in the tranquil surroundings of Longmead, Letchworth Garden City.

# Step inside

## About the area

Set into a prime location, Longmead offers a quiet, community-focused atmosphere while still being just minutes from the heart of Letchworth. Residents enjoy easy access to local amenities, including a variety of independent shops, cafes, and the popular Broadway cinema. The area is also well-served by supermarkets, leisure facilities, and highly regarded schools, making it an excellent choice for families and professionals alike. For commuters, Letchworth Garden City station is nearby, offering regular services into London King's Cross in under 40 minutes, while the A1(M) is just a short drive away for convenient road links north and south. Surrounded by leafy avenues, parks, and the signature open green spaces that define Letchworth, Longmead combines the best of town and country living, offering a peaceful retreat without sacrificing connectivity or convenience.















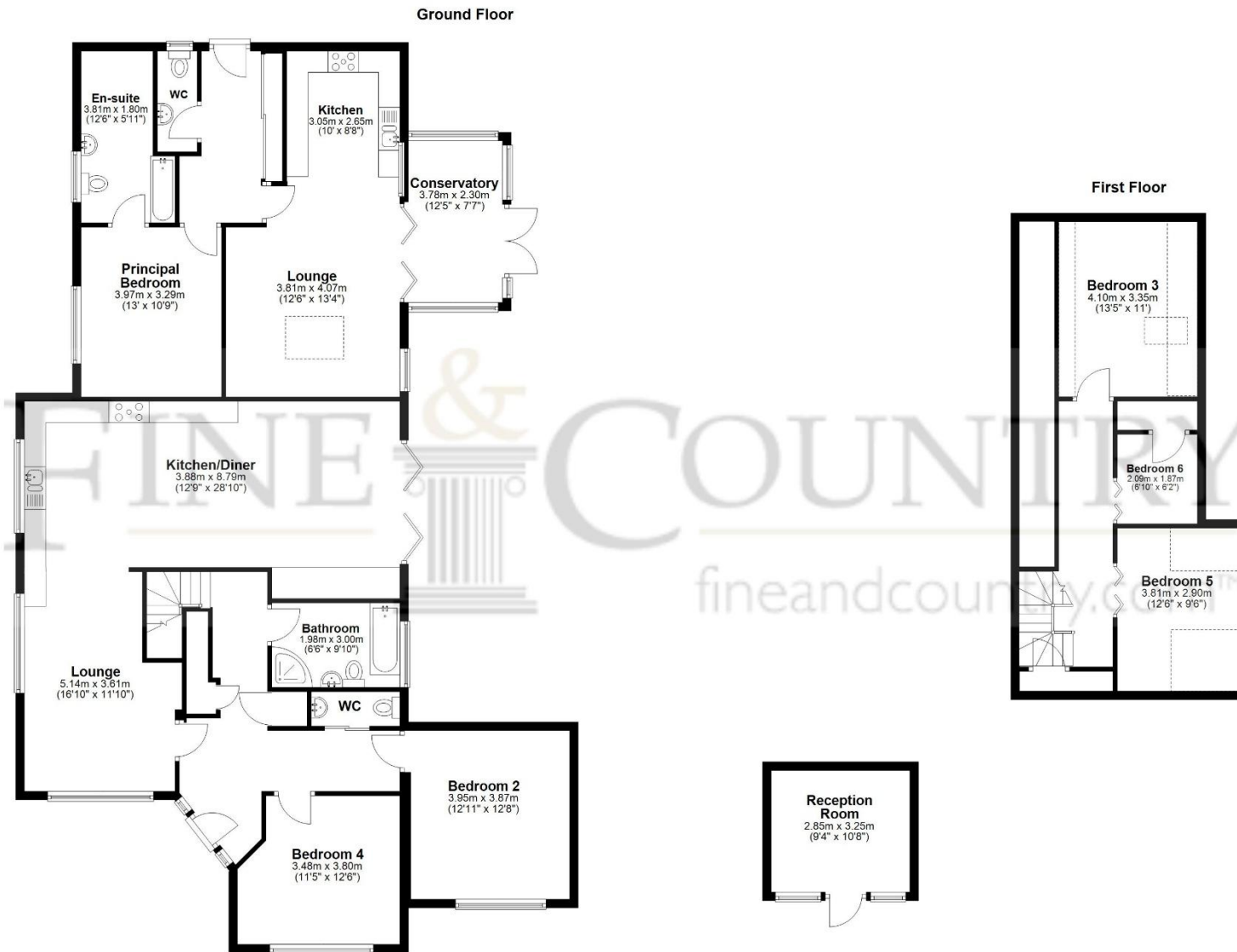
# Step outside

## Longmead

The exterior of this home is just as impressive as the interior. Step outside into a fully landscaped garden offering beautifully curated spaces for both relaxation and entertainment. Whether you're hosting guests under the pergola-covered seating area, soaking up the sun in the dedicated sunbathing zone, or enjoying alfresco dining on the patio, this outdoor space has been thoughtfully designed for all lifestyles. A mix of laid astro lawn and paving ensures a low-maintenance yet visually stunning setting, ideal for year-round enjoyment.

The ample off-street parking provides room for multiple vehicles, and the home's curb appeal is enhanced by well-maintained front and side gardens, completing this exceptional offering.





For illustrative purposes only - NOT TO SCALE - Measurements shown are approximate. The size and position of doors, windows, appliances and other features are approximate. Plan produced using PlanUp.



Fine & Country

Tel: +44(0) 1462 222555

[northherts@fineandcountry.com](mailto:northherts@fineandcountry.com)

Station Place, Letchworth Garden City, Hertfordshire SG6 3AQ

