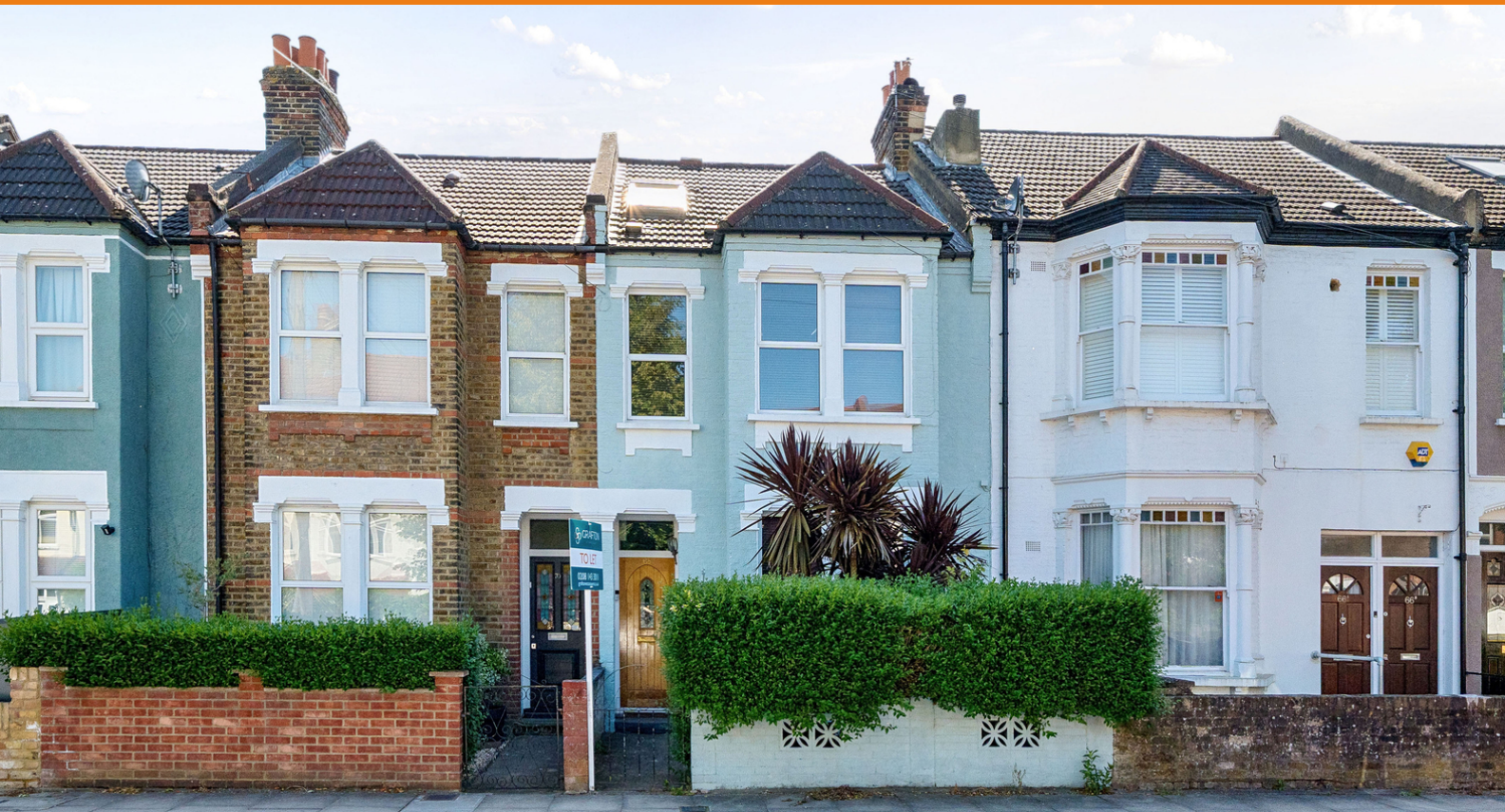


TO LET

£2,300 pcm

Stembridge Road, London, SE20 7UF



A well presented Victorian mid terrace family home, with three double bedrooms and large double reception room. Positioned conveniently for local amenities including Stewart Fleming Primary School, excellent transport links and multiple green spaces. Available now.

Set across three floors, this charming three bedroom Victorian home offers a wonderful blend of space and character. The ground floor features a spacious lounge, separate modern kitchen, and utility area, while upstairs, you'll find two generous double bedrooms and a large family bathroom. The third double bedroom is located on the top floor in the converted loft, providing a quiet and private retreat. Outside, a low-maintenance paved rear garden offers a lovely space to relax or entertain.

Set within a quiet residential road and in a vibrant neighbourhood, this family home is conveniently located for various local amenities, including shops, green spaces, and excellent public transport link like Birkbeck and Elmers End train stations.

- Mid Terrace House
- Three Double Bedrooms
- Double Reception
- Utility Room
- Available Now
- EPC Rating D



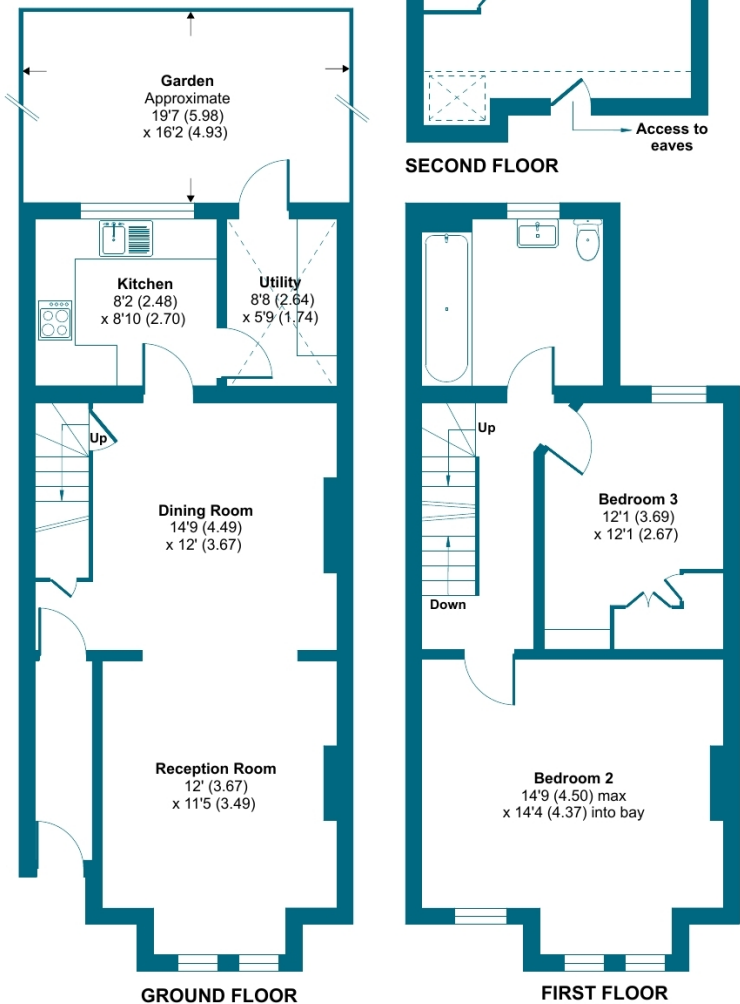


Stembridge Road, London, SE20

Approximate Area = 1172 sq ft / 108.8 sq m
Limited Use Area(s) = 22 sq ft / 2 sq m
Total = 1194 sq ft / 110.8 sq m

For identification only - Not to scale

Denotes restricted
head height



Floor plan produced in accordance with RICS Property Measurement 2nd Edition, Incorporating International Property Measurement Standards (IPMS2 Residential). © nitchecom 2025. Produced for Grafton Estate Agents. REF: 1288210

