

Stocker Court Flat 6a Paxton Avenue

HAWKINGE, Folkestone

CT18 7SH

£200,000 LEASEHOLD

Welcome to this charming two bedroom second floor apartment in the lovely village of Hawkinge. This property is in excellent condition throughout and offers a bright and spacious living area perfect for entertaining guests or simply relaxing after a long day. The apartment comes with an allocated parking space, so you never have to worry about finding a spot when you come home. And with no onward chain, you can move in and make this place your own without any hassle. Whether you're looking for your first home, downsizing, or seeking an investment opportunity, this property has it all. Don't miss out on the chance to own a piece of Hawkinge - schedule a showing today! For your chance to view call SOLE agent Burnap and Abel now on 01303 258590.



Entrance Hall

Lounge/Dining Room

18' 9" x 13' 2" (5.71m x 4.01m)

Kitchen

10' 3" x 7' 2" (3.12m x 2.18m)

Bedroom

10' 7" x 8' 2" (3.23m x 2.49m)

Bathroom

8' 2" x 6' 3" (2.49m x 1.91m)

Bedroom

11' 5" x 10' 4" (3.48m x 3.15m)

Lease and service charge

Lease: 107 Year Currently remaining

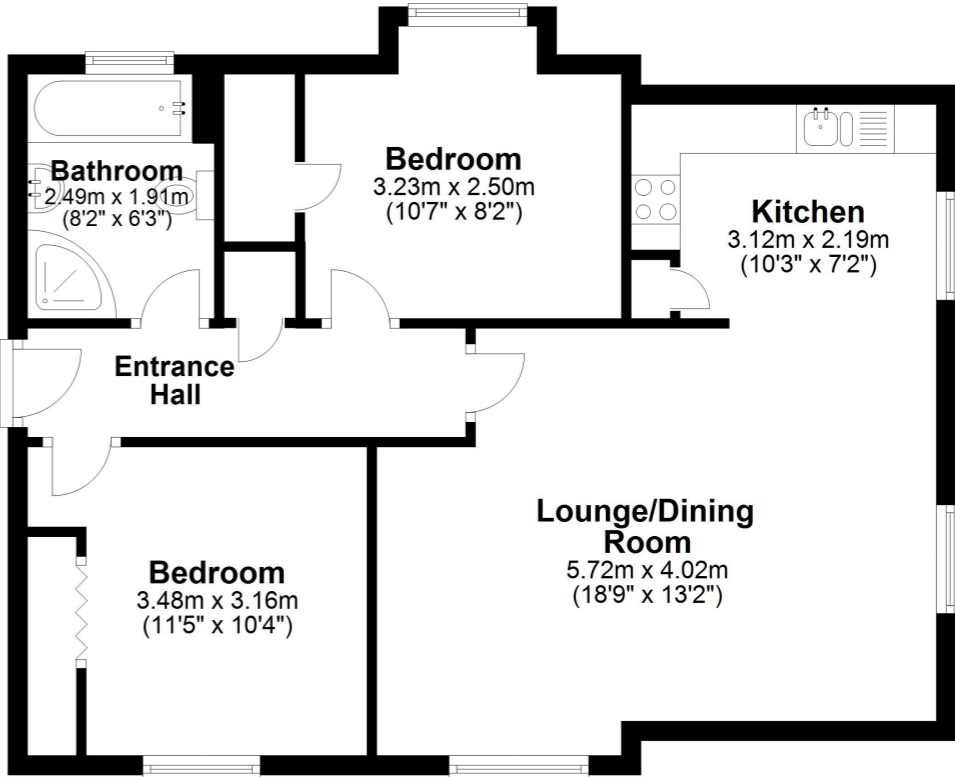
Monthly Service Charge = £239.98

Please note the rent and service charge is reviewed annually 01 April.

Off road parking

Allocated off road parking for 1 car

Second Floor
Approx. 63.3 sq. metres (681.8 sq. feet)



Total area: approx. 63.3 sq. metres (681.8 sq. feet)

Whilst every attempt has been made to ensure the accuracy of the floor plan contained here, measurements of doors, windows, rooms and any other items are approximate and no responsibility is taken for any error, omission or mis-statement. This plan is for illustrative purposes only and should be used as such by any prospective purchaser. Plan produced using PlanUp.

