



9 Whittle Court,  
Knowlhill, Milton Keynes, MK5 8FT

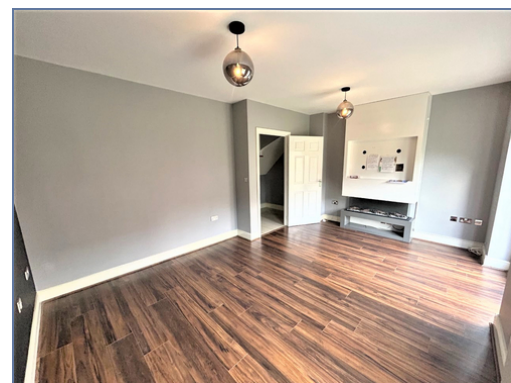
Tel: 01908 231 551  
mail@elevationstateagents.com



**18 Heston Walk, Oxley Park, Milton  
Keynes, Buckinghamshire, MK4 4JP**

**£400,000 Freehold**

- Four Good sized rooms
- Over looking woodland
- Desirable and Highly Sought-After Location
- Brilliant family home
- Garage & Driveway For Two Cars
- EPC Rating



See our full selection of properties online at [www.elevationstateagents.com](http://www.elevationstateagents.com)



Located adjacent to woodland with a beautiful outlook. A Brilliant Four bedroom townhouse overlooking the woodland in the highly sought-after location of Oxley Park. The property is situated down a private road and briefly comprises of entrance hall, Kitchen, Dining room and lounge with doors leading to rear garden to the ground floor, the first floor offers three good sized bedrooms and the family bathroom and master bedroom with ensuite to the second floor. Outside the property offers a garage and driveway for two vehicles. To the rear there is an enclosed well kept garden.

Oxley Park is a popular location approximately three miles from Central Milton Keynes Station. The property is within walking distance to local amenities and is within the catchment area of The Hazeley Academy. The local area boasts scenic walks through woodland.

## Disclaimer

Whilst we have endeavoured to prepare our sales particulars accurately none of the services, appliances or equipment have been tested. A buyer should satisfy themselves on such matters prior to purchase. Any measurements or distances mentioned in these particulars are for guide reference only. If such particulars are fundamental to a purchase, buyers should rely on their own enquiries. All enquiries should be directed to Elevation Estate Agents in the first instance.



Floor plans are for layout purposes only. Measurements are approximate and subject to inaccuracies. Plan produced using PlanIt360.