



GB



8 Blackthorne Court, Staines Road West, Ashford, Surrey TW15 1PZ
£260,000 - Leasehold



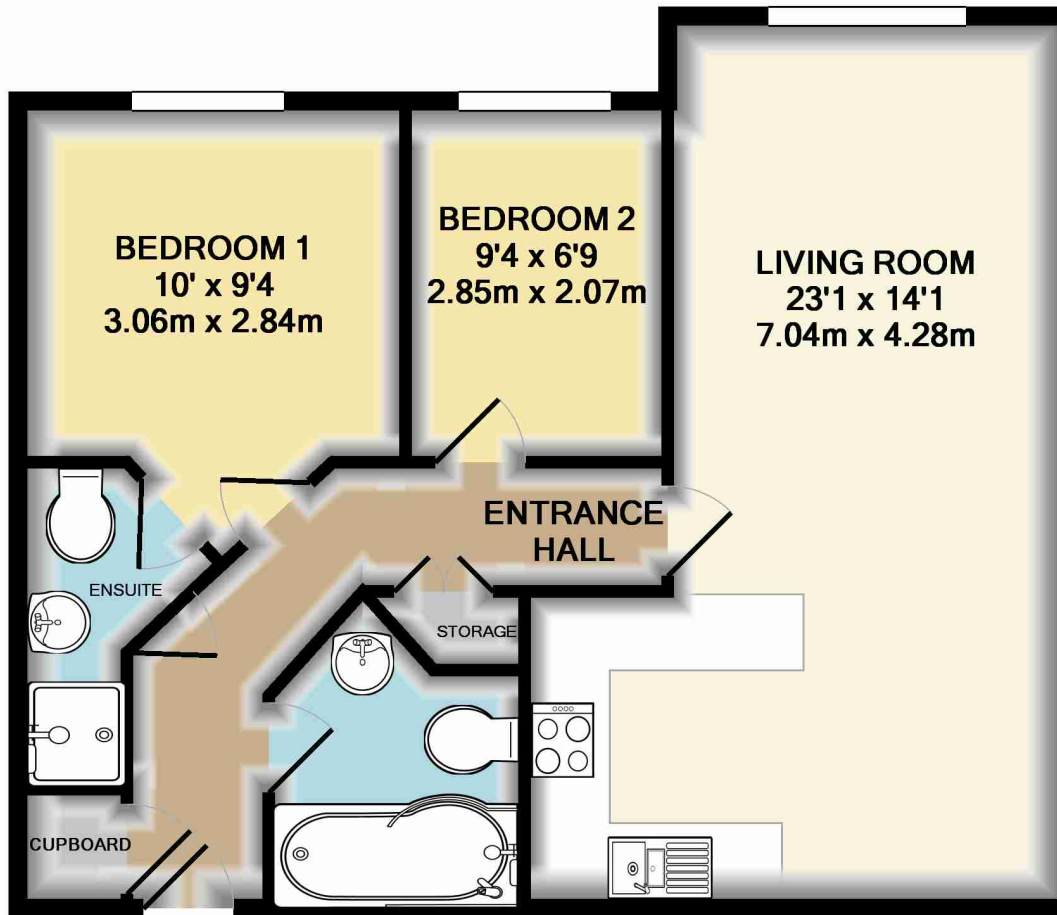
PROPERTY DESCRIPTION

A well presented first floor TWO BEDROOM apartment with TWO BATHROOMS and an ALLOCATED PARKING SPACE situated in this popular development within easy access of amenities and major road and rail links. Benefits include: a lease exceeding 100 years, gas central heating, double glazing throughout, master bedroom with ensuite shower room, second bedroom, a modern three piece family bathroom, additional storage and airing cupboards situated off the hallway and an impressive open plan kitchen living room. This property also comes with an allocated parking space to the rear of the block and is offered with no onward chain. Viewings recommended.

POINTS OF INTEREST

- First floor apartment
- Two bedrooms
- Two bathrooms
- Gas central heating
- Double glazed throughout
- Spacious living room
- Open plan kitchen
- Allocated parking
- No onward chain
- Viewings recommended





TOTAL APPROX. FLOOR AREA 54.9 SQ.M. (590 SQ.FT.)

Whilst every attempt has been made to ensure the accuracy of the floor plan contained here, measurements of doors, windows, rooms and any other items are approximate and no responsibility is taken for any error, omission, or mis-statement. This plan is for illustrative purposes only and should be used as such by any prospective purchaser. The services, systems and appliances shown have not been tested and no guarantee as to their operability or efficiency can be given

Made with Metropix ©2015