

96, Bowen Road, Locking Parklands Weston Super Mare. BS24
7FU

£175,000 Leasehold

FOR SALE



www.housefox.co.uk



01934 314242
01275 404601
01278 557700
sales@housefox.co.uk

PROPERTY DESCRIPTION

HOUSE FOX ESTATE AGENTS PRESENT...This Beautifully presented one bedroom ground floor apartment on the sought after development of Locking Parklands.

Internal accommodation briefly comprises entrance hall, bathroom, bedroom, open plan living room/kitchen with access to private Westerly facing balcony. Outside you have private allocated parking.

If you are looking for a great sized modern one bedroom apartment that has easy access to commuter links then this may be for you, call House Fox Estate Agents to book a viewing.

FEATURES

- 360 VIRTUAL TOUR AVAILABLE
- Ground Floor Apartment
- One Bedroom
- Gas Central Heating
- Westerly Facing Balcony
- Off Road Parking
- EPC - B
- UPVC Double Glazing
- Modern Features
- Sought After Location



ROOM DESCRIPTIONS

Communal Entrance

Secure access communal entrance into communal areas with access to apartment

Apartment Entrance Hall

Doors to all rooms, radiator, wall mounted video entry system allowing access to communal areas, storage cupboard, door through to;

Living Room/Kitchen

13' 6" x 18' 1" (4.11m x 5.51m) Range of wall to base units with roll edge worktops inset stainless steel sink and drainer, space and plumbing for washing machine, space for fridge freezer, integrated four ring gas hob with oven under and extractor over, two radiators, UPVC sliding doors opening onto westerly facing decked private balcony area.

Bedroom

11' 3" x 9' 8" (3.43m x 2.95m) Two UPVC double glazed windows with front aspect, built in double door wardrobe, radiator.

Bathroom

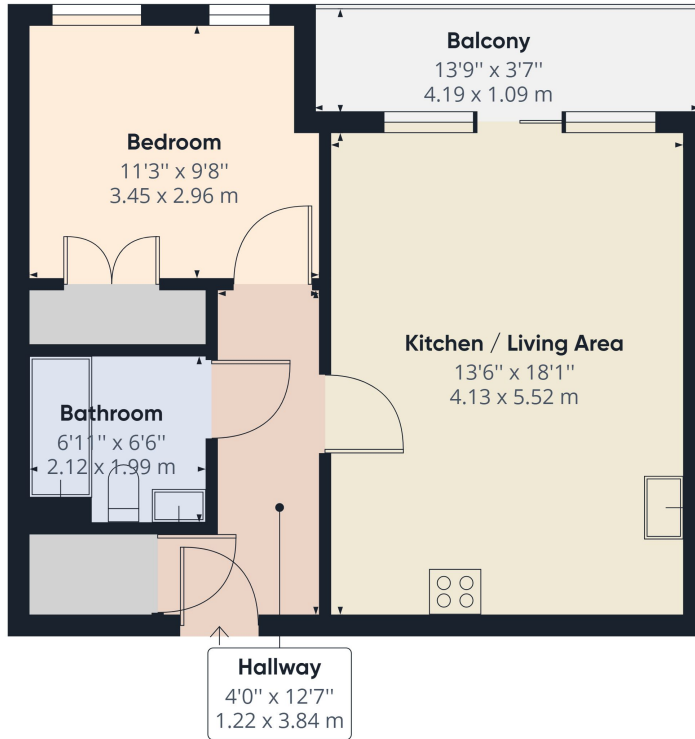
6' 1" x 6' 6" (1.85m x 1.98m) Three piece white suite comprising low level WC, pedestal wash hand basin, paneled bath with shower over, tiled splash prone areas, extractor fan and heated towel rail

Outside

Parking for one car



FLOORPLAN & EPC



Approximate total area⁽¹⁾
497.30 ft²
46.20 m²

(1) Excluding balconies and terraces

While every attempt has been made to ensure accuracy, all measurements are approximate, not to scale. This floor plan is for illustrative purposes only.

GIRAFFE360

