



449, London Road
Northwich CW9 8NH

£330,000

www.westates.co.uk
01606 331784



A stunning, Victorian, bay fronted villa, located in the heart of the village

- Stunning Victorian Family Home
- Two Reception Rooms
- Kitchen Dining Room
- Three Double Bedrooms
- Modern Bathroom
- Utility Room/Home Office
- Beautiful Gardens
- Parking for Two Cars

Description

A stunning, Victorian, bay fronted villa, located in the heart of the village. The property is presented to an extremely high standard and has the most beautiful rear garden, which serves as a tranquil retreat to the hustle and bustle of the village itself. With gas central heating and PVCu double glazing, comprises: Reception porch, entrance hall, two connecting reception rooms, kitchen dining room, first floor landing, three double bedrooms and bathroom. Outside to the rear there is a small courtyard and external utility room/home office and beyond the courtyard is the garden. There is a driveway to the side with parking for two cars.



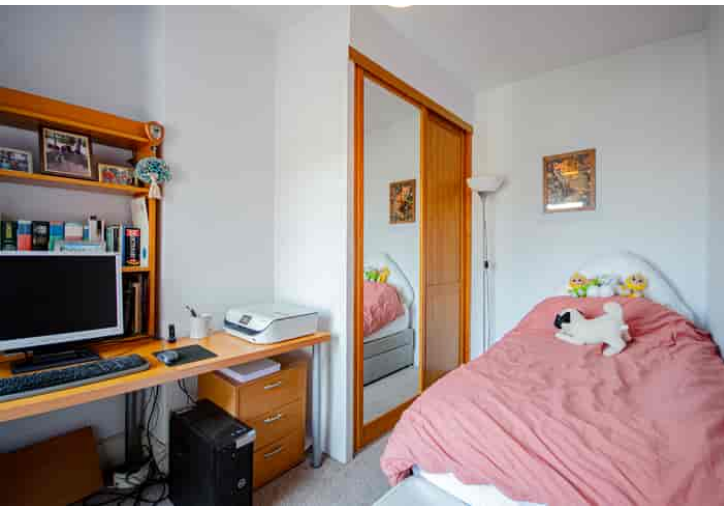
Location

Davenham is a small village located due south of Northwich and unlike many surrounding Cheshire villages it still retains an excellent range of local amenities making it almost self sufficient. These include a Spar supermarket and filling station, a pharmacy, hairdressers and barbers, a florist and fish and chip shop along with two really popular pubs, The Oddfellows Arms and The Bulls Head, the later with a great reputation for good, home made, local food. There is a village primary school which always excels with its Ofstead ratings and the well regarded Country High School Leftwich is close by. The A556 and A49 easily facilitate access to the region's major road network with Manchester and Liverpool airports both within 20 miles. Nearby Northwich caters for a more comprehensive range of amenities, including leading supermarkets with Waitrose, Sainsbury's and Tesco all represented.

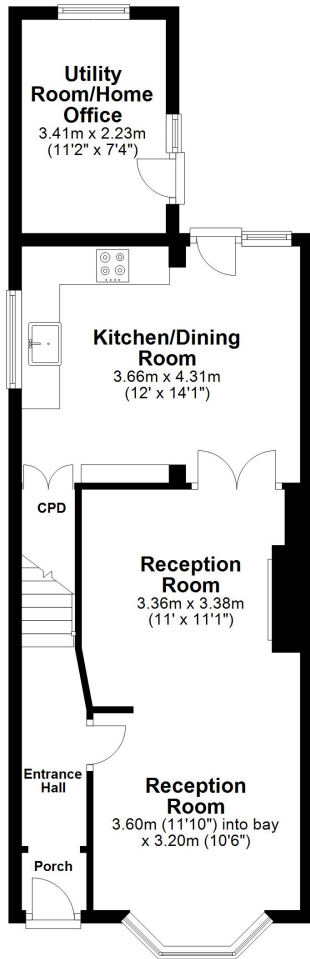
Tenure

FREEHOLD

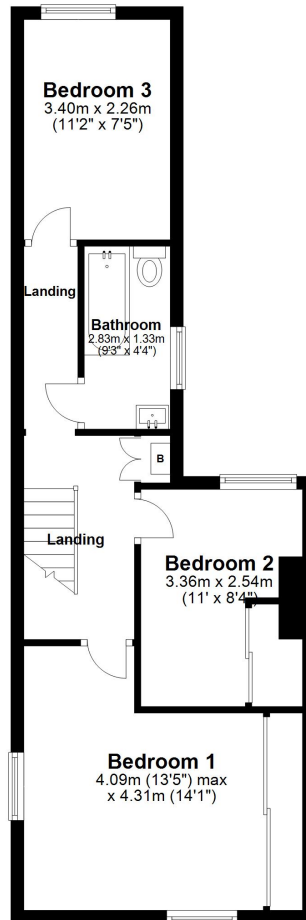
EPC Rating:



Ground Floor
Approx. 52.3 sq. metres (562.8 sq. feet)



First Floor
Approx. 44.6 sq. metres (479.8 sq. feet)



Total area: approx. 96.9 sq. metres (1042.6 sq. feet)



Boomin

These particulars, whilst believed to be accurate are set out as a general outline only for guidance and do not constitute any part of an offer or contract. Intending purchasers should not rely on them as statements of representation of fact, but must satisfy themselves by inspection or otherwise as to their accuracy. All measurements quoted are approximate. We are unable to confirm the working order of any fixtures and fittings including appliances that are included in these particulars. No person in this firm's employment has the authority to make or give any representation or warranty in respect of the property.