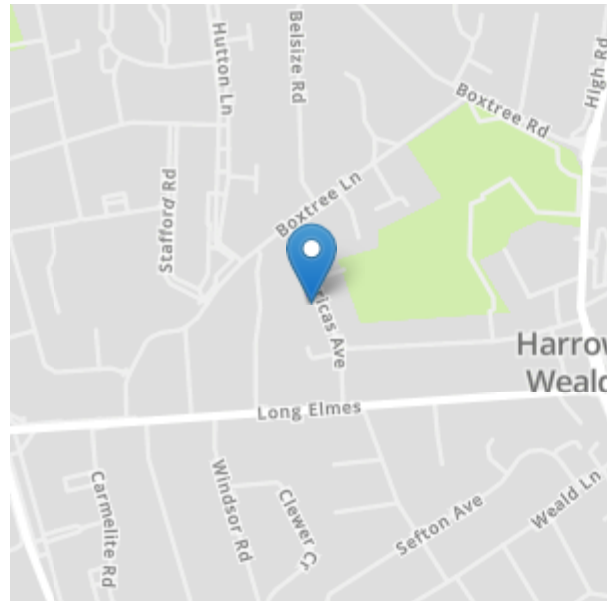


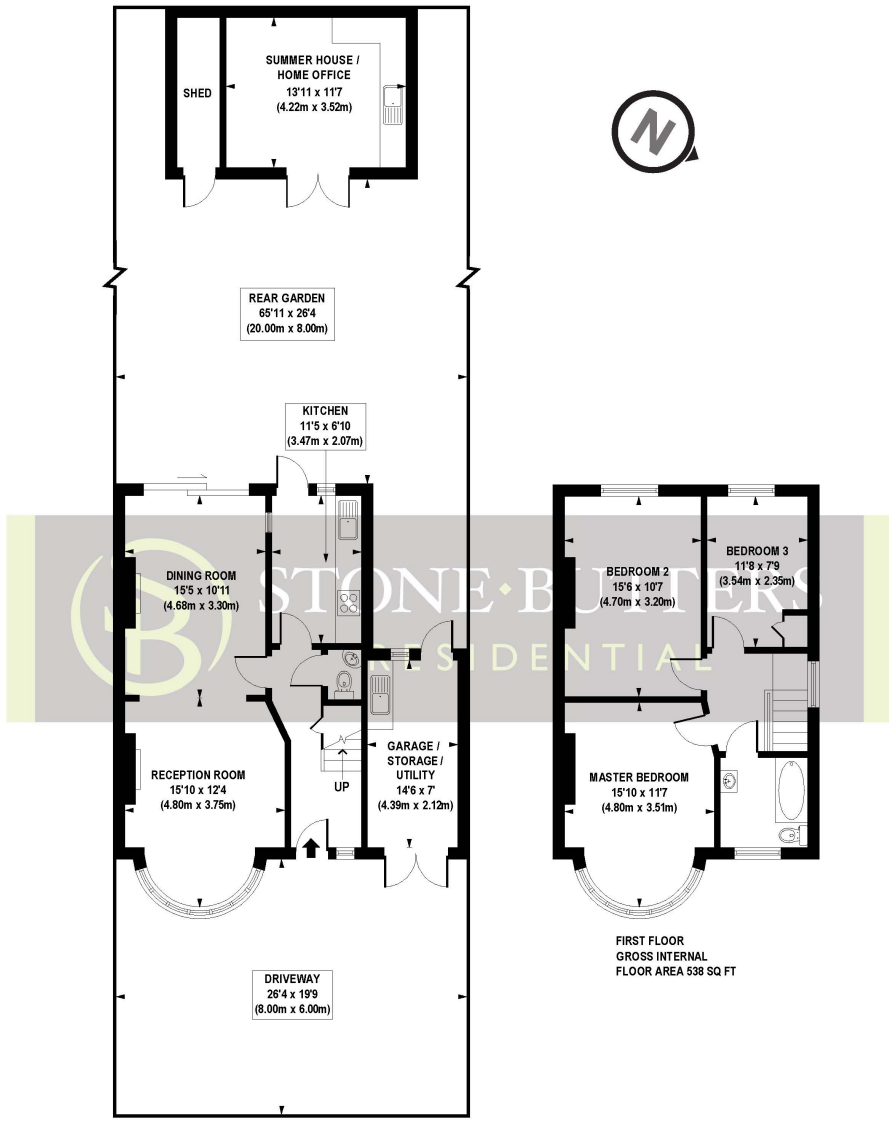
Set between Stanmore and Harrow Weald boasting an abundance of greenery, charming commons and acres of Green Belt. It is one of North West London's most desirable areas due to its boutique cafes, shopping facilities, and location to prominent state and private schools which include Haberdashers' Aske's, North London Collegiate, St. Margaret's and Merchant Taylors. Stanmore offers excellent transport facilities with links to London and the north with Stanmore (Jubilee line) and Headstone Lane (Overground) stations and the M1, M25 and A41 all close by.



Maricas Avenue, Harrow Weald, Harrow. HA3 6JA. Freehold

Well Maintained Bright & Airy 3 Bedroom Family Home set in this popular location being a short walk to Harrow Weald's shopping & transport facilities. The property offers great potential for further extensions (STPP) to create additional living space and bedrooms. Numerous features including recently fitted kitchen and bathroom, own driveway with parking for 3 cars, summer house/home office at rear of garden and Harrow Recreation Ground a stones throw away.

- 3 Bedroom Family Home
- Potential For Extensions (STPP)
- Off Street Parking - 3 Cars
- Garage/Utility/Storage
- Modern Fitted Kitchen & Bathroom
- Home Office/Summer House
- Close To Local Shopping and Transport Facilities
- Internal Viewing Highly Recommended



APPROX. GROSS INTERNAL FLOOR AREA 1373 sq. ft / 127.53 sq. m (Including Summer House & Shed)
 APPROX. GROSS INTERNAL FLOOR AREA 1169 sq. ft / 108.63 sq. m (Excluding Summer House & Shed)

Floorplan is for illustrative purposes only and is not to scale. Every attempt has been made to ensure the accuracy of the floorplan shown, however all measurements, fixtures, fittings and data shown are an approximate interpretation for illustrative purposes only. Liability for errors, omissions or mis-statement through negligence or otherwise is hereby excluded.

CPCREATIVE
 PROPERTY MARKETING

(Floor plans are not to scale and measurements are given for guidance only)

