



The Banks • Hope Cove





The Banks

Hope Cove • TQ7 3HF

Salcombe 5.6 miles | Kingsbridge 5.1 miles | A38 Devon Expressway 20.8 miles | Totnes 18 miles (London Paddington 2 hours 5 minutes) (all distances and times approximate)

Experience breathtaking sea vistas paired with the convenience of being within walking distance to golden beaches and the heart of Hope Cove.

Ground Floor

Entrance hallway | Kitchen | Living room | Conservatory | Bedroom 1
Bedroom 2 | Bedroom 3 | Bathroom | W/C

External

Private driveway | Double garages | Ample parking | Front garden
and patio with glass balustrade | Rear garden

Charles Head
113 Fore Street, Kingsbridge Devon
TQ7 1BG
01548 852352
kingsbridge@charleshead.co.uk





Introducing The Banks, a charming bungalow nestled in the picturesque coastal village of Hope Cove. Upon entry, you're greeted by an inviting open and airy hallway.

The spacious living room boasts a sense of tranquility with sea views. Sliding doors lead out onto the patio area embraced by glass balustrading. This seamless indoor-outdoor flow creates an ideal space for relaxation or entertaining, accentuated by panoramic countryside and sea views. Additionally, being south-westerly facing, the patio area offers ample sunlight throughout the day, making it the perfect spot for enjoying an evening tippie while basking in the warmth of the setting sun. Adjoining the living room is a conservatory offering direct access to the rear garden, adding to the property's sense of space and versatility.

The kitchen features a range of wall and floor cupboards, a built-in oven and microwave, and space for white goods, access conveniently leads to the rear garden.







The Master bedroom offers breathtaking sea views and practical built-in wardrobes for storage solutions. The second and third bedrooms are equally inviting, each with windows overlooking the garden, allowing natural light to fill the space and create a serene ambiance.

The bathroom is well-appointed, featuring a shower over bath, catering to both relaxation and practicality. Additionally, there is a separate W/C for added convenience.

Stepping outside, the rear garden presents a harmonious blend of greenery and paved surfaces. Partially laid to lawn, it provides a tranquil setting for outdoor leisure activities, with a tiled patio area perfect for al fresco dining or soaking up the sun.

Completing this unique property is a double garage and a private driveway, offering ample parking space for multiple vehicles. Whether you're seeking a peaceful coastal retreat or a versatile home, The Banks promises a lifestyle of comfort, convenience, and natural beauty in the heart of Hope Cove.



Hope Cove and surrounding areas



Hope Cove is a charming seaside village located on the south coast of Devon, England. This picturesque village is known for its stunning natural beauty, with sandy beaches, crystal-clear waters, and breathtaking coastal walks. The village boasts a relaxed and friendly atmosphere, making it a popular destination for tourists and locals alike. There are several restaurants, cafes, and shops in the village, offering a range of dining and shopping options. Visitors to Hope Cove can also enjoy a variety of water-based activities, such as swimming, kayaking, and paddleboarding. With its idyllic coastal setting and rich local culture, Hope Cove is a truly special place that captures the essence of traditional Devon life.

The Nearby village of Thurlestone has a vibrant community and is renowned for its 4-star hotel together with pub, post office/general stores, church and a highly regarded primary school. There is even a converted BT Red Phone Box providing 'The Thurlestone Book Exchange'. The hotel has a superb health club with a spa, indoor and outdoor swimming pools and there is a fine 18-hole golf course. A short stroll across Thurlestone Sands with the landmark Thurlestone Rock, "thirled stone"(arched- shaped rock formation) takes you to the popular 'Beach House' café and Thurlestone Marsh, one of three small wetlands south of the village.

The market town of Kingsbridge, approximately 4 miles to the west, provides a comprehensive range of educational, recreational and shopping facilities including, a health centre, leisure centre with an indoor swimming pool, library, schools and churches. The popular town of Salcombe is within 6 miles and the market town of Totnes 16 miles where there are rails links to London Paddington.

Tenure: Freehold

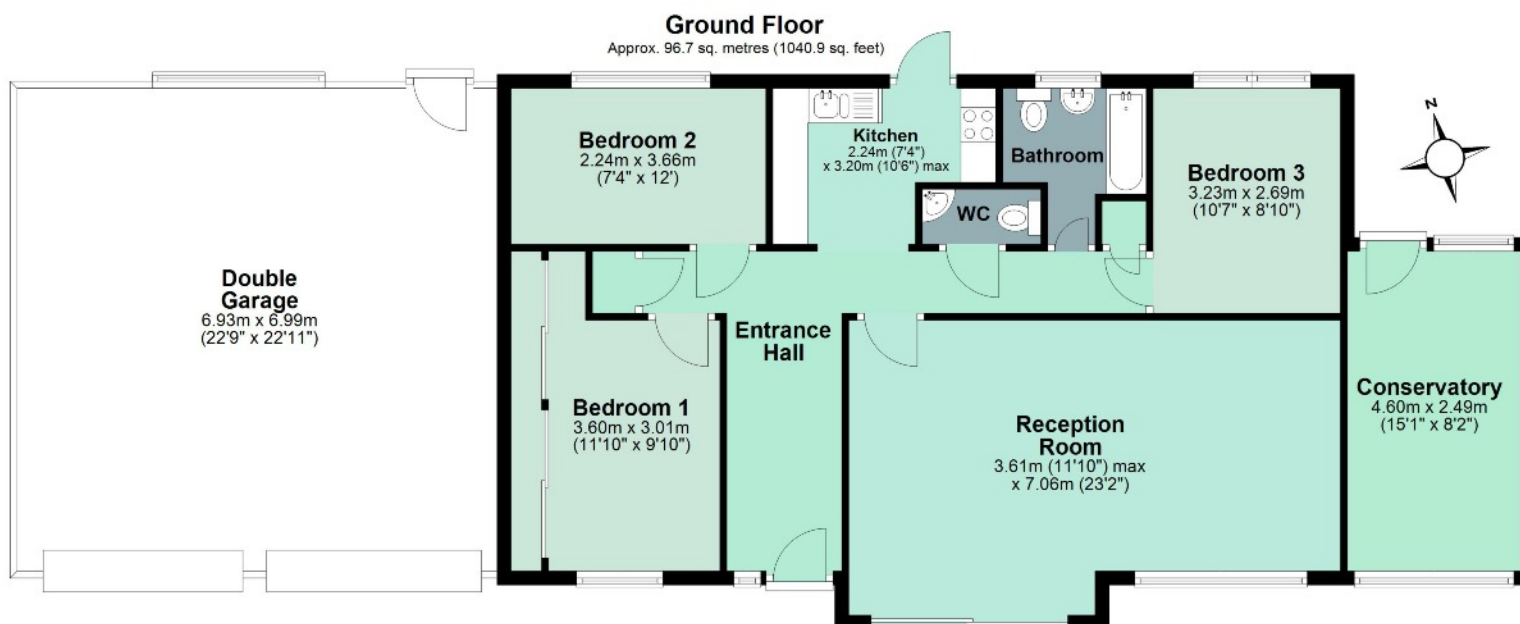
Council Tax Band: E

Local Authority: South Hams District Council

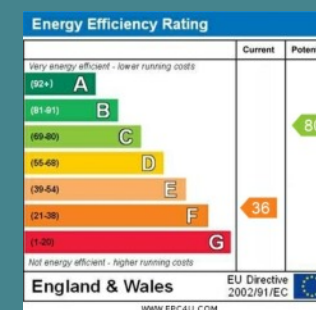
Services: Mains electricity, water and drainage. Electric heating.

Directions: From Kingsbridge head towards Hope Cove via the A381. On arriving at Hope Cove proceed into the village and take the right hand turning into Weymouth Park, then take the first left turn into Grand View Road. The property will be on the right side up the driveway.

Viewing's: Very strictly by appointment only.



Total area: approx. 96.7 sq. metres (1040.9 sq. feet)



IMPORTANT NOTICE: We would like to inform prospective purchasers that these sales particulars have been prepared as a general guide only. They are prepared and issued in good faith and are intended to give a fair description of the property, but do not constitute part of an offer or contract. Any description or information given should not be relied on as a statement or representation of fact that the property or its services are in good condition. Neither Charles Head, nor any of its employees, has any authority to make or give any representation or warranty whatsoever in relation to the property. Floorplans are for guidance purposes only and may not be to scale. The photographs show only certain parts and aspects of the property at the time they were taken. Any reference to alterations to, or use of, any part of the property is not a statement that any regulations or other consent has been obtained. . If there are any important matters likely to affect your decision to buy, please contact us before viewing the property. ALL STATEMENTS CONTAINED IN THESE PARTICULARS AS TO THIS PROPERTY ARE MADE WITHOUT RESPONSIBILITY ON THE PART OF CHARLES HEAD.