



229 Howlands, Welwyn Garden City, Hertfordshire, AL7 4HG

- LARGE REAR GARDEN
- DRIVEWAY
- THREE BEDROOMS
- WALKING DISTANCE TO A SELECTION OF PRIMARY SCHOOLS
- BIFOLD DOORS TO GARDEN
- LOVELY FAMILY HOME
- PLANTATION SHUTTERS
- CLOSE BY TO LOCAL AMENITIES
- POPULAR LOCATION



PROPERTY DESCRIPTION

Welcome to this charming three-bedroom TERRACED family home nestled in the heart of Welwyn Garden City. This property boasts an expansive plot, offering exceptional living area to create your dream residence. The generously sized driveway provides enough parking for two cars, while the spacious, landscaped rear garden offers plenty of room for an extension—similar to nearby homes that have successfully expanded (subject to planning consent). Inside, the home is elegantly presented and ready for you to move in. Perfectly located, around the corner from the QE11 along with convenient access to the town centre, train station, and major road links including the A414 and A1M. Additionally, several highly regarded primary schools are within walking distance. Don't miss the opportunity to view this property and fully appreciate its potential!



ROOM DESCRIPTIONS

WELCOME TO HOWLANDS

Nestled in the heart of this sought-after residential area, this property boasts a generous driveway that provides parking for two cars. As you enter the residence, you'll find a welcoming lobby that flows seamlessly into the inviting living room, highlighted by large front-facing window that fills the space with natural light and to the rear BIFOLD doors opening out onto the expansive garden. The kitchen, located also to the rear, features integrated oven and microwave, including space for a dishwasher and washing machine. Ensuring convenience for everyday living a door from the kitchen leads directly to the rear patio, perfect for outdoor enjoyment. Lovey wooden surfaces with a centre island for food preparation. Gas hob with extractor fan. White glossy finish to the kitchen units. Plenty of space for the family to enjoy their meals. Stairs leading upstairs provide a secret storage area. You'll discover three generously sized bedrooms on the first floor with every bedroom boasting plantation shutters. The family bathroom is also conveniently located on this floor with a separate toilet all very tastefully done and fully tiled. A lovely family home to make it your own.

TOUR OF THE GARDEN

The beautifully large landscaped garden offers a decked patio area opening out from the kitchen and bifold doors from the living room to the immediate rear, well stocked mature borders and lawn. Lovely area for the family to enjoy family barbeques in the sun. Attractive outdoor space, ideal for outdoor living and entertaining.

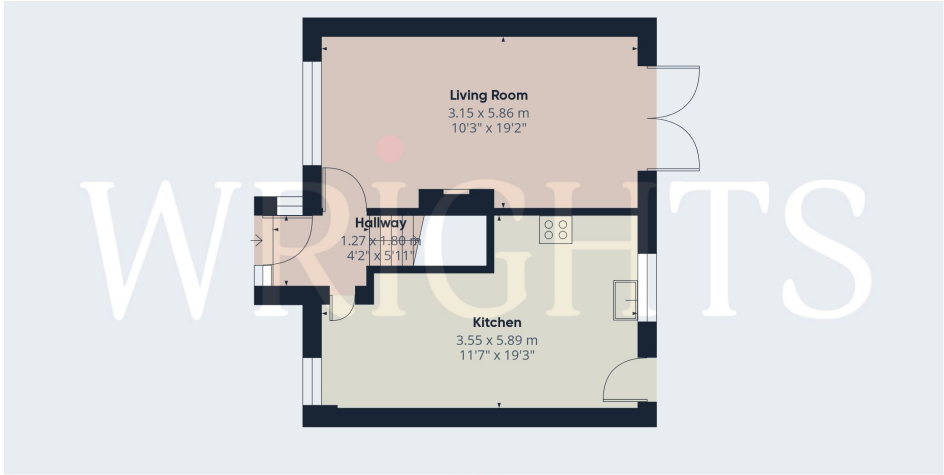
WHAT THE OWNERS SAY

We'll miss our much-loved family home – a place full of happy memories, laughter, and comfort. One of things we've found invaluable is the huge, south-facing garden, which has been the backdrop for countless games of hide and seek, picnics on sunny afternoons, and family barbecues; there's plenty of space for children to run around, play, and explore, while adults can relax on the decking. The location has been very convenient for family life. We are a short walk from local shops, the park, schools, doctors, and the post office, making every day errands and school runs easy. It's been great being able to pop out for some milk or walk the children to school without needing the car. We've been very lucky to have amazing neighbours and we'll miss them – considerate, welcoming, and always there when you need some sugar! If you're looking for a place to make your own family memories, with space to grow and everything you need close by, we hope you'll feel as at home here as we have.

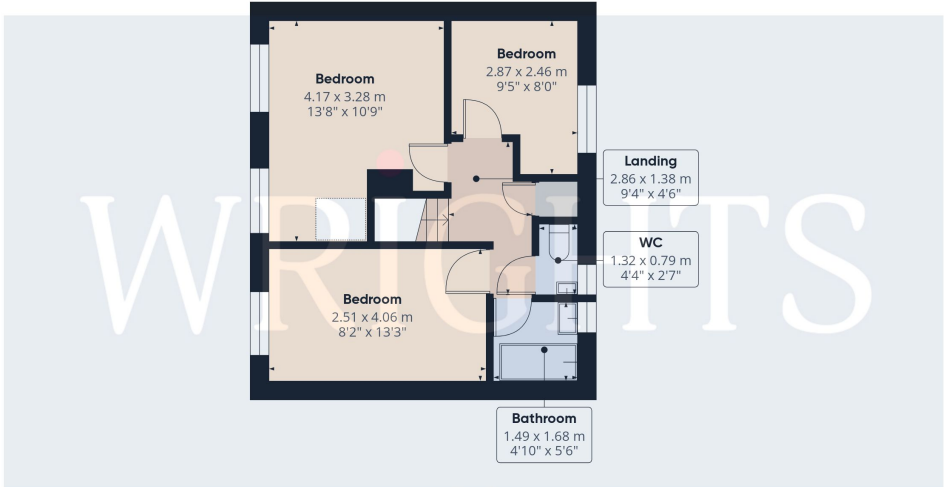
ABOUT WELWYN GARDEN CITY

Welwyn Garden City was founded by Sir Ebenezer Howard in the 1920s and designated a new town in 1948. It was aimed to combine the benefits of the city and countryside. Welwyn Garden City was an escape from life in overcrowded cities to a place of sunshine, leafy lanes, countryside and cafes. Emphasis was placed on the Garden City's healthy environment. Today the town centre is a busy and bustling place with a selection of shops. The Howard Shopping Centre is located in the centre, where you can find a selection of high street favourites including John Lewis. There is also a Waitrose, Sainsburys and ALDI. There is also a quaint cinema, showing the latest films. If you fancy a spot of lunch the town is home to a plethora of coffee shops, independent restaurants and well known chains including the French restaurant Cote which overlooks the fountain and for a real buzzing atmosphere.





Floor 0



Floor 1

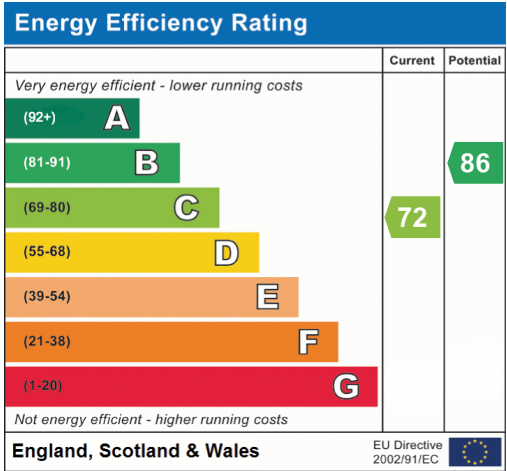
WRIGHTS

Approximate total area^m
75.1 m²
808 ft²

(1) Excluding balconies and terraces

While every attempt has been made to ensure accuracy, all measurements are approximate, not to scale. This floor plan is for illustrative purposes only.
Calculations are based on RICS IPMS 3C standard.

GIRAFFE360



Welwyn Garden City
36, Stonehills, Welwyn Garden City, AL8 6PD
01707 332211
wgc@wrightsof.com