



1 Turner Close, Stevenage, Hertfordshire, SG1 4AF

£770,000

Lane & Bennetts are pleased to present a rare and original property by Wates Homes for just the second occasion in its history. The former show house for the select development located in highly regarded Turner Close offers 2,229 Sq Ft / 207.1 Sq m of light and well appointed ground floor living, a kitchen & breakfast room, separate dining room, utility room, and a huge L shaped living and family space opening onto the Delightful private rear garden and patio, with a sizable summerhouse an integral double garage which could easily be repurposed to a playroom gym or home office. The first floor offers five double bedrooms - with the main bedroom en suite plus a large family 4 piece bathroom.

*Lane &*  
BENNETTS



- FIVE BEDROOMS | TWO BATHROOMS | THREE RECEPTIONS
- VERY SOUGHT-AFTER LOCATION
- INTEGRAL DOUBLE GARAGE | OFF ROAD DRIVE FOR 3 CARS
- CHAIN FREE PURCHASE | FREEHOLD PROPERTY
- WALKING DISTANCE TO HISTORIC OLD TOWN | LISTER HOSPITAL | SCHOOLS
- PRIVATE REAR GARDEN WITH SUMMERHOUSE
- RECENT UPGRADES INCLUDE NEW BOILER & ELECTRICAL
- OPEN DAY TO BE ANNOUNCED
- COUNCIL TAX BAND G | EPC Band D

Approximate Gross Internal Area  
 Ground Floor = 109.6 sq m / 1,180 sq ft  
 First Floor = 97.5 sq m / 1,049 sq ft  
 Total = 207.1 sq m / 2,229 sq ft  
 (Excluding External Cupboard)

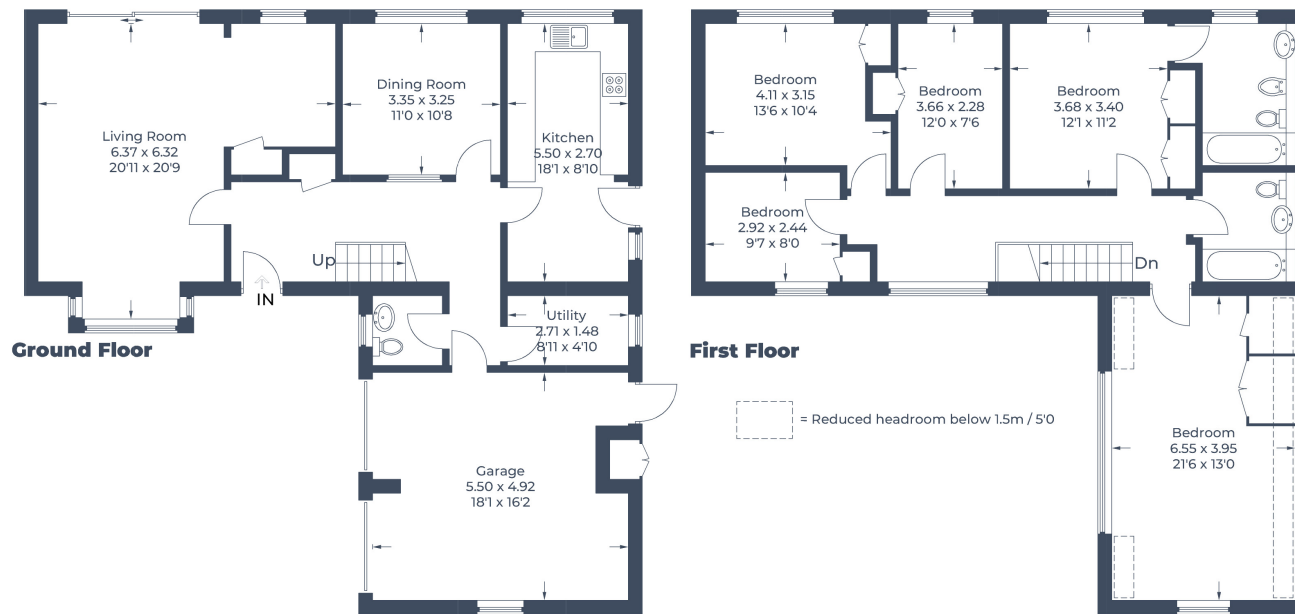


Illustration for identification purposes only,  
 measurements are approximate, not to scale.  
 © CJ Property Marketing Produced for Lane & Bennetts

