



Three Bedroom Town House
Fitzgilbert Close, Gillingham, Kent, ME7 2WE

Guide Price £350,000
Freehold

Fitzgilbert Close, Gillingham, Kent, ME7 2WE

Guide Price £350,000

Freehold

Description

****Guide Price £350,000 - £375,000****

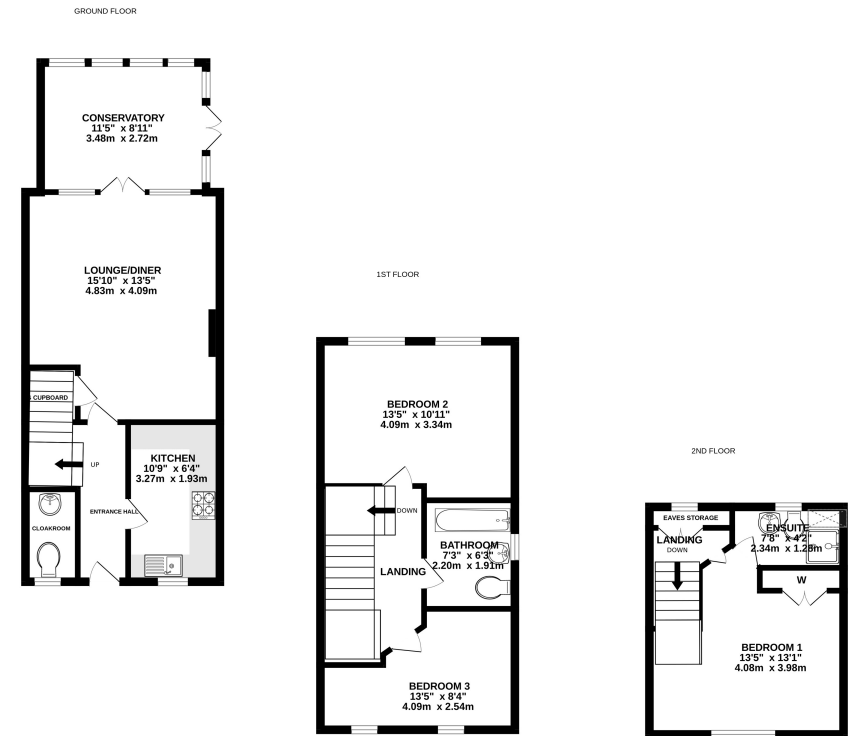
This fantastic three double bedroom, two bathroom family home with allocated parking for two vehicles needs to be at the top of your viewing list! Close to “good” rated schools, local amenities and great transport links, this turnkey end of terrace town house is set over three floors, offering flexible living space, ample built in storage and a neutral décor throughout. You are welcomed into a tiled hallway and the ground floor offers a downstairs cloakroom, good size kitchen with plenty of work and cupboard space, spacious living/dining room, opening into a sunny conservatory overlooking a fabulous east facing garden with side and rear access, lawn, patio, pergola, fish tank, fruit & veg patch and BBQ area which makes this a great space to entertain. The family bathroom and first two of the double bedrooms are on the first floor and on the top floor the Velux on the landing floods the space with light and offers eves storage and access to the main bedroom suite which has en-suite facilities. This really is a must see and won't be available long so please contact the Greyfox Sales & Lettings Team in Rainham today to arrange your viewing.

Key Features

- End of Terrace Town House
- Lounge/Diner
- Three Double Bedrooms
- Downstairs Cloakroom, Family Bathroom & En- Suite Facilities
- Two Allocated Parking Spaces
- Great Access to the M2 and Transport Links
- Sunny Conservatory
- East Facing Garden measuring approx. 27 x 28ft

Local Area

Gillingham is located within the Medway towns and offers railway links to central London and Ebbsfleet International and road connections to the A2/M2, M25 and M20. In addition to its town centre Gillingham offers a host of amenities including ice skating, country parks, an outdoor pool, a golf course, Medway Park Sports Centre and more.

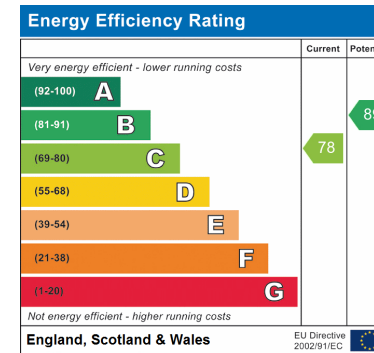
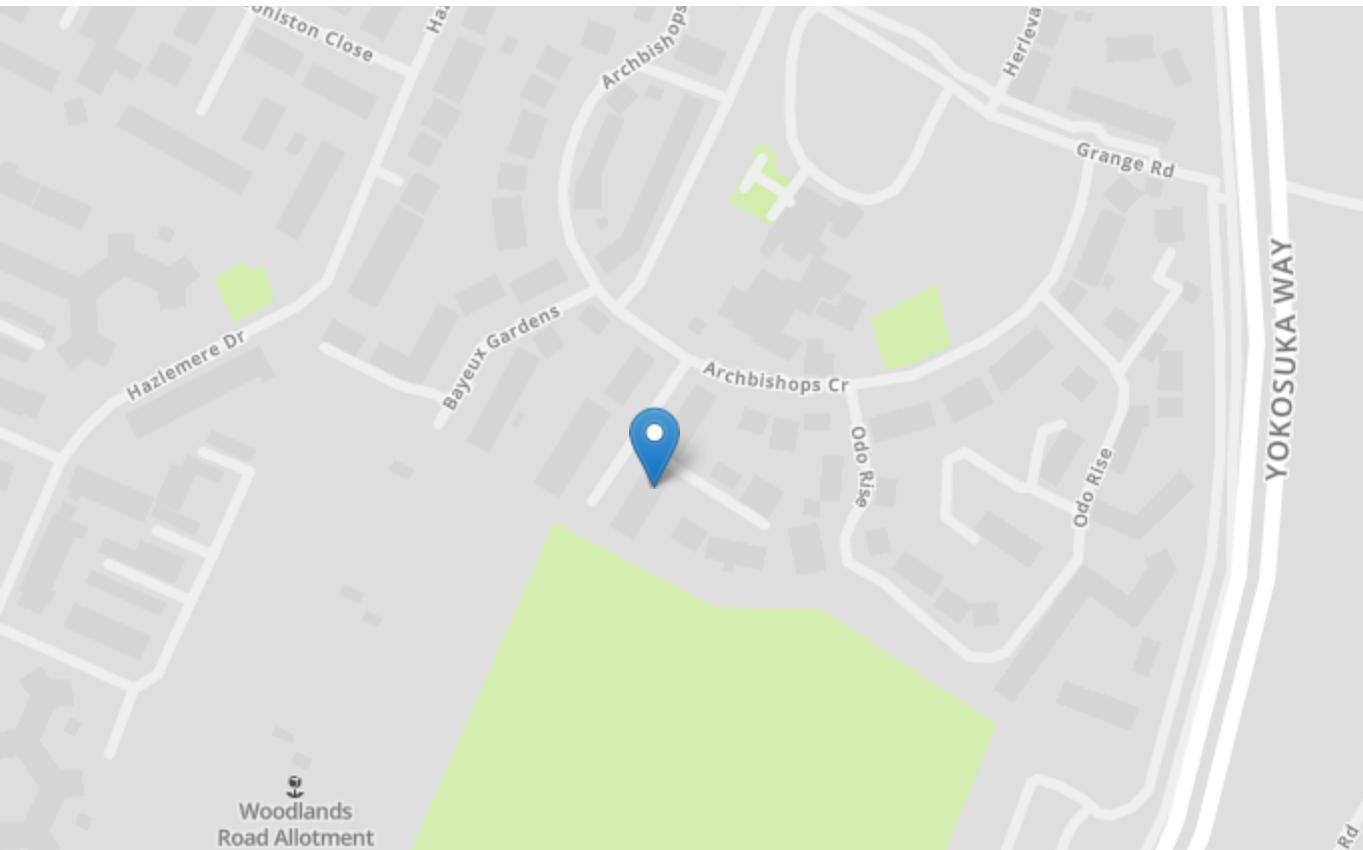


Whilst every attempt has been made to ensure the accuracy of the floorplan contained here, measurements of doors, windows, rooms and any other items are approximate and no responsibility is taken for any error, omission or mis-statement. This plan is for illustrative purposes only and should be used as such by any prospective purchaser. The services, systems and appliances shown have not been tested and no guarantee as to their operability or efficiency can be given.
Made with Metropo ©2023



Property Location

Fitzgilbert Close, Gillingham, Kent, ME7 2WE



Tenure	Freehold
Lease Term	N/A
Ground Rent	N/A
Service Charge	£133.53 every 6 months
Local Authority	Medway
Council Tax	Band D

Greyfox Walderslade

Unit 2, Thetford House
Walderslade Village Centre
Walderslade Road
Chatham
Kent
ME5 9LR
Tel: 01634 672227 Email:
walderslade@greyfox.co.uk

Greyfox Rainham

67C High Street
Rainham
Kent
ME8 7HS
Tel: 01634 377737 Email:
rainham@greyfox.co.uk

Agent Notes

These particulars are prepared as a general guide to a broad description of the property and should not be relied upon as a statement or representation of fact and do not constitute part of an offer or contract. The seller does not make or give nor do our employees or Greyfox have authority to make or give any representation or warranty to the property. We have not carried out a structural survey and the services, appliances and specific fittings have not been tested. All photographs, measurements, floorplans and distances referred to are given as a guide only and should not be relied upon for the purchase of carpets or any other fixtures or fittings. Lease details, service charges and ground rent (where applicable) and council tax are given as a guide only and should be checked and confirmed by you on inspection and your solicitor prior to exchange of contracts. If there are any points of particular importance to you we will be pleased to check the information for you and to confirm that the property remains available. This is particularly important should you be travelling some distance to view and where statements have been made by us to the effect that the information has not been verified. The copyright of all details, photographs and floorplans remain exclusive to Greyfox. For details of our privacy policy and referral fee arrangements with any of our selected partner companies please visit <https://www.greyfox.co.uk/legal/privacy> and <https://www.greyfox.co.uk/referral-fees>.