

**3 Bedroom(s), End of Terrace House, To be Advised**

**Holyrood Road, Town Moor, Doncaster.**



- 3D Virtual Tour Available
- Rear Enclosed Garden
- Lounge
- Local Amenities, Schools and Transport Links
- Great Opportunity for First Time Buyers and Investors

- Three Bedroom End Of Terrace Home
- Open Plan Kitchen Diner
- Family Bathroom
- Well Connected Location

**£155,000**  
**For Sale**

*Book your viewing today* Tel: 01302 247754

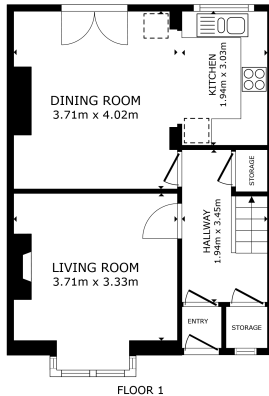


## Owner's View

This three-bedroom end of terrace home offers spacious living, perfect for families or first-time buyers. The property features a welcoming lounge and an open-plan kitchen diner, ideal for both everyday living and entertaining. Upstairs, there are three good-sized bedrooms and a family bathroom. Outside, the home benefits from a rear enclosed garden, providing a private space to relax or enjoy time outdoors. Located close to a range of local amenities, schools, and transport links, this property combines comfort, convenience, and style in a sought-after residential area.

## Ground Floor

### Floor Plan



GROSS INTERNAL AREA  
FLOOR 1: 46.3 sq. ft. FLOOR 2: 41.9 sq. ft.  
TOTAL: 88.2 sq. ft.  
SIZES AND DIMENSIONS ARE APPROXIMATE, ACTUAL MAY VARY.



### Entry



### Kitchen Diner



### Lounge

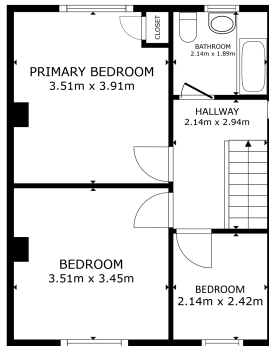






First Floor

Floor Plan



FLOOR 2

GROSS INTERNAL AREA  
FLOOR 1: 44.2 m<sup>2</sup> FLOOR 2: 42.9 m<sup>2</sup>  
TOTAL: 87.1 m<sup>2</sup>  
SIZES AND DIMENSIONS ARE APPROXIMATE, ACTUAL MAY VARY



Master Bedroom



Bedroom



Bedroom



Bathroom





## Externals

### Front Aspect



### Rear Externals



## Property Information

Council Tax Band - A

Utilities - Mains Gas, Mains Electricity, Mains Water

Water Meter -

Tenure -

Solar Panels -

Space Heating System -

Approximate Heating System Installation Date -

Water Heating System -

Approximate Water Heating Installation Date -

Boiler Location -

Approximate Electrical System Installation Date -

Permanent Loft Ladder -

Loft Insulation -

Loft Boarded out -

Whilst every effort is made to ensure that the information contained in these particulars is reliable, they do not constitute or form part of an offer or any contract. The Property Hive accept no liability for the accuracy of the contents, and therefore they should be independently verified by prospective buyers or tenants before agreeing an offer. All measurements provided are approximate and should be verified before exchange of contracts. No appliances, fixtures or fittings have been tested and should be checked by the buyer before exchange of contracts to ensure they are in good working order.



## Energy Performance Certificate

