

FOR SALE

Claxton Grove,
Hammersmith, W6

Terraced House
Hammersmith

£900,000 fh

3  2  1 

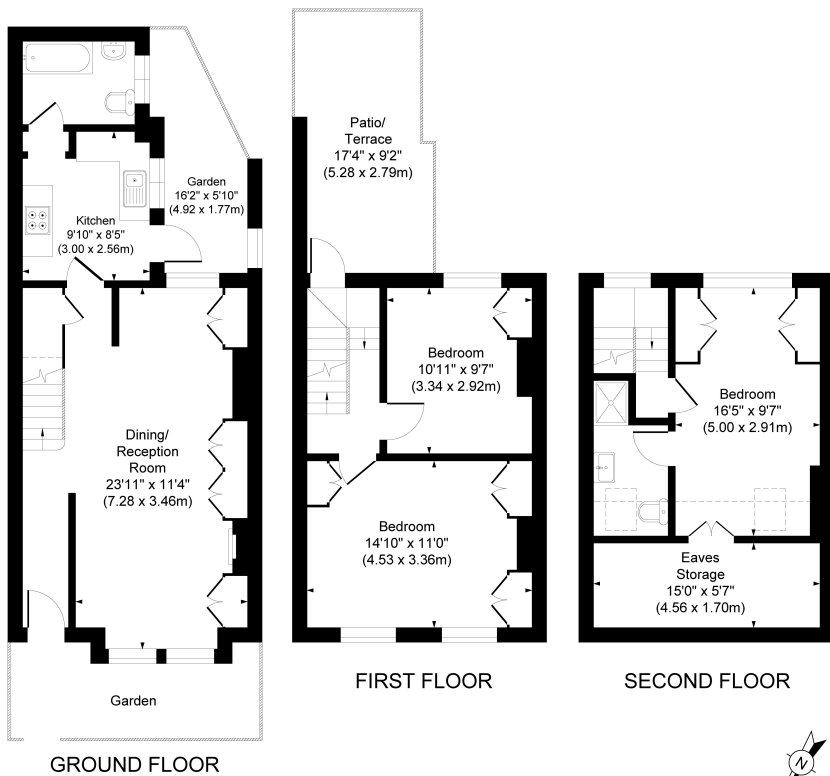


**horton
andgarton**

SALES / LETTINGS / PROPERTY MANAGEMENT

hortonandgarton.co.uk | Sales 020 8819 0510 | Lettings 020 8819 0511
172 King Street, Hammersmith, W6 0QU





**horton
andgarton**

CLAXTON GROVE, W6
 APPROXIMATE GROSS INTERNAL AREA
1062 Sq' / 98.69 SqM
 APPROXIMATE EAVES STORAGE AREA
83 Sq' / 7.75 SqM
 APPROXIMATE TOTAL AREA
1145 Sq' / 106.44 SqM

Not to scale, for guidance only and must not be relied upon as a statement of fact. All measurements and areas are approximate only



Victorian terraced house | Three bedrooms - Two bathrooms | 1062 Sq' - 98.69 SqM | No chain | EPC rating C | Hammersmith



hortonandgarton.co.uk
 Sales 020 8819 0510
 Lettings 020 8819 0511

172 King Street, Hammersmith, W6 0QU