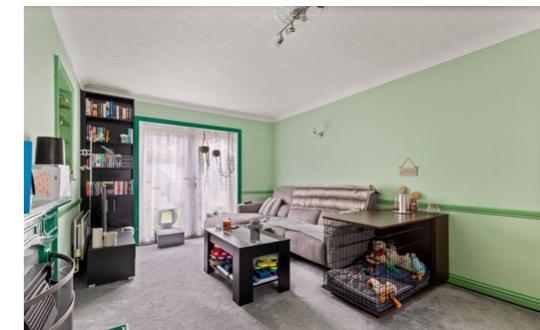


29 Fleming Way

Folkestone
CT19 6LR

£270,000 FREEHOLD

DARFT DETAILS... FOR SALE WITH BURNAP + ABEL... Burnap + Abel are delighted to offer this three bedroom mid terraced house situated in Folkestone. The property is in our opinion in very good decorative order and offers a lounge, kitchen/diner, family bathroom and three bedrooms. Additional benefits include a private rear garden, gas central heating, double glazing and no onward chain. For your chance to view call sole agent Burnap + Abel now on 01303 258590.



Porch

With built in storage cupboard and doors to;

Entrance Hall

With the staircase to the first floor landing and doors to;

Living Room

21' 5" x 10' 8" (6.52m x 3.24m) With double glazed window to the front, double glazed doors to the rear, carpeted flooring and radiator

Kitchen/Diner

20' 6" x 11' 3" (6.24m x 3.42m) With a mix of wall and base units, roll edge work surface, stainless steel sink and drainer, plumbing for a washing machine, space for range style cooker, electric extractor, tiled splash back, tiled floor, radiator, double glazed window and double glazed door to the rear garden.

First Floor Landing

With the loft access hatch and doors to;

Bedroom One

12' 5" x 10' 4" (3.78m x 3.15m) With a double glazed window, radiator and built in wardrobe.

Bedroom Two

13' 10" x 9' 7" (4.21m x 2.93m) With a double glazed window and radiator.

Bedroom Three

11' 11" x 6' 5" (3.63m x 1.95m) With a double glazed window, radiator and wood effect flooring.

Bathroom

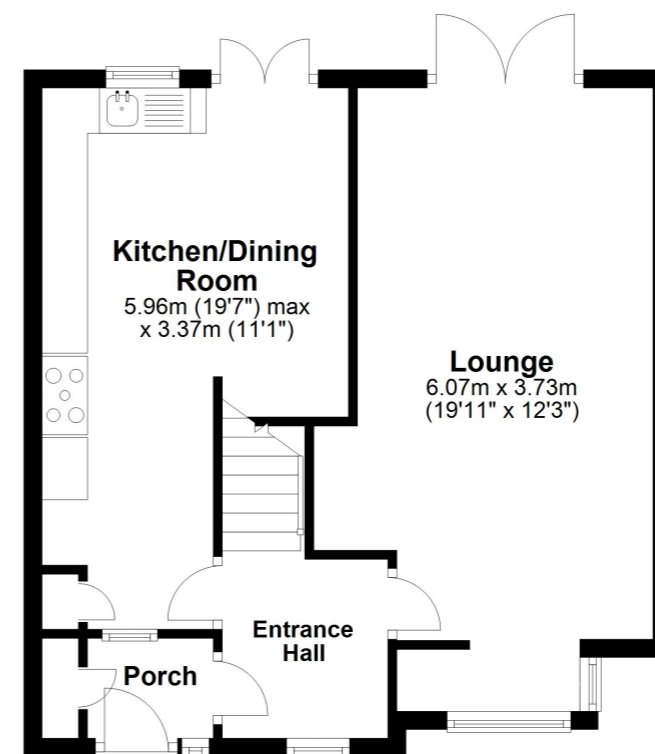
With a matching white bathroom suite comprising low level W.C, wash hand basin, paneled bath, tiled walls, tiled floor, frosted double glazed window and radiator.

Rear Garden

An enclosed rear garden with two tiers. The bottom tier has artificial lawn, fenced borders and steps up to the second tier. The second tier has a block paved patio, rear access gate and large wooden shed.

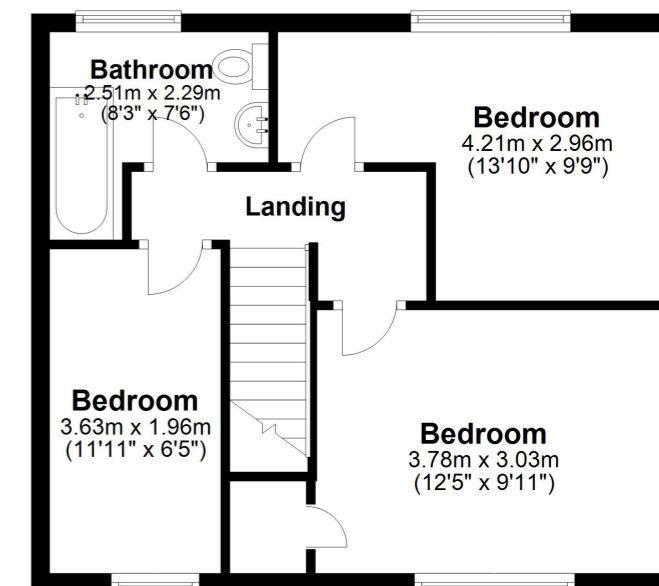
Ground Floor

Approx. 46.6 sq. metres (501.7 sq. feet)



First Floor

Approx. 40.9 sq. metres (440.2 sq. feet)



Whilst every attempt has been made to ensure the accuracy of the floor plan contained here, measurements of doors, windows, rooms and any other items are approximate and no responsibility is taken for any error, omission or mis-statement. This plan is for illustrative purposes only and should be used as such by any prospective purchaser. Plan produced using PlanUp.

